

Product datasheet

Recombinant Human RALY protein (denatured)  
ab187463

1 Image

Description

Product name	Recombinant Human RALY protein (denatured)
Purity	> 90 % SDS-PAGE.
Expression system	Escherichia coli
Accession	<u>Q9UKM9</u>
Protein length	Full length protein
Animal free	No
Nature	Recombinant
Species	Human
Sequence	MGSSHHHHHH SSGLVPRGSH MGSMSLKLQA SNVTNKNDPK SINSRVFIGN LNTALVKKSD VETIFSKYGR VAGCSVHKGY AFVQYSNERH ARAAVLGENG RVLAGQTLDI NMAGEPKPDR PKGLKRAASA IYSGYIFDYD YYRDDFYDRL FDYRGRLSPV PVPRAVPVKR PRVTVPLVRR VKTNVPVKLF ARSTAVTTSS AKIKLKSSEL QAIKTELTQI KSNIDALLSR LEQIAAEQKA NPDGKKKGDG GGAGGGGGGG GSGGGGSGGG GGGGSSRPPA PQENTTSEAG LPQGEARTRD DGDEEGLLTH SEEELEHSQD TDADDGALQ
Predicted molecular weight	35 kDa including tags
Amino acids	1 to 306
Tags	His tag N-Terminus
Additional sequence information	(NCBI Accession No.: NP_057951)

Specifications

Our **Abpromise guarantee** covers the use of **ab187463** in the following tested applications.

The application notes include recommended starting dilutions; optimal dilutions/concentrations should be determined by the end user.

Applications	SDS-PAGE
Form	Liquid

## Preparation and Storage

### Stability and Storage

Shipped at 4°C. Store at +4°C short term (1-2 weeks). Upon delivery aliquot. Store at -20°C or -80°C. Avoid freeze / thaw cycle.

pH: 8.00

Constituents: 0.32% Tris HCl, 10% Glycerol (glycerin, glycerine)

## General Info

### Function

Probable-RNA binding protein. Could be a heterogeneous nuclear ribonucleoprotein (hnRNP). May be involved in pre-mRNA splicing.

### Tissue specificity

Expressed in heart, brain, lung, liver, skeletal muscle, kidney and pancreas. Weakly expressed in placenta.

### Sequence similarities

Belongs to the RRM HNRPC family. RALY subfamily.  
Contains 1 RRM (RNA recognition motif) domain.

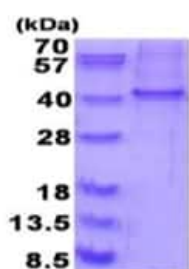
### Post-translational modifications

Phosphorylated upon DNA damage, probably by ATM or ATR.

### Cellular localization

Nucleus.

## Images



15% SDS PAGE analysis of ab187463 (3µg).

SDS-PAGE - Recombinant Human RALY protein  
(denatured) (ab187463)

**Please note:** All products are "FOR RESEARCH USE ONLY. NOT FOR USE IN DIAGNOSTIC PROCEDURES"

## Our Abpromise to you: Quality guaranteed and expert technical support

- Replacement or refund for products not performing as stated on the datasheet
- Valid for 12 months from date of delivery
- Response to your inquiry within 24 hours
- We provide support in Chinese, English, French, German, Japanese and Spanish
- Extensive multi-media technical resources to help you
- We investigate all quality concerns to ensure our products perform to the highest standards

If the product does not perform as described on this datasheet, we will offer a refund or replacement. For full details of the Abpromise, please visit <https://www.abcam.com/abpromise> or contact our technical team.

#### **Terms and conditions**

---

- Guarantee only valid for products bought direct from Abcam or one of our authorized distributors