

Product datasheet

Recombinant Human RAP1B protein ab103049

1 Image

Description

Product name	Recombinant Human RAP1B protein
Purity	> 90 % SDS-PAGE. ab103049 was purified using conventional chromatography techniques.
Expression system	Escherichia coli
Accession	<u>P61224</u>
Protein length	Full length protein
Animal free	No
Nature	Recombinant
Species	Human
Sequence	MGSSHHHHHSSGLVPRGSHMREYKLVVLGSGGVGKS ALTVQFVQGIFVE KYDPTIEDSYRKQVEVDAQQCMLEILD TAGTEQFTAMRDL YMKNGQGFAL VYSITAQSTFNDLQDLREQILRVKDTDDVPMILVGNKCDLE DERVVGKEQ GQNLARQWNNCAFLESSAKSKINVNEIFYDLVRQINRKTPV PGKARKKSS C
Predicted molecular weight	23 kDa including tags
Amino acids	1 to 181
Tags	His tag N-Terminus

Specifications

Our **Abpromise guarantee** covers the use of **ab103049** in the following tested applications.

The application notes include recommended starting dilutions; optimal dilutions/concentrations should be determined by the end user.

Applications	SDS-PAGE Mass Spectrometry
Mass spectrometry	MALDI-TOF
Form	Liquid

Preparation and Storage

Stability and Storage

Shipped at 4°C. Upon delivery aliquot and store at -20°C or -80°C. Avoid repeated freeze / thaw cycles.

pH: 5

Constituents: 0.077% DTT, 0.316% Tris HCl, 20% Glycerol (glycerin, glycerine), 1.16% Sodium chloride

General Info

Function

GTP-binding protein that possesses intrinsic GTPase activity. Contributes to the polarizing activity of KRIT1 and CDH5 in the establishment and maintenance of correct endothelial cell polarity and vascular lumen. Required for the localization of phosphorylated PRKCZ, PARD3 and TIAM1 to the cell junction.

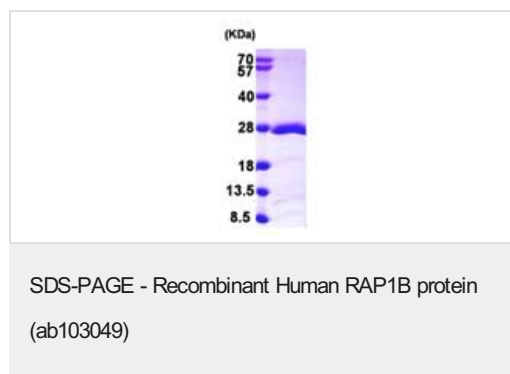
Sequence similarities

Belongs to the small GTPase superfamily. Ras family.

Cellular localization

Cell membrane. Cytoplasm > cytosol. Cell junction. May shuttle between plasma membrane and cytosol. Presence of KRIT1 and CDH5 is required for its localization to the cell junction.

Images



15% SDS-PAGE analysis of 3µg ab103049

Please note: All products are "FOR RESEARCH USE ONLY. NOT FOR USE IN DIAGNOSTIC PROCEDURES"

Our Abpromise to you: Quality guaranteed and expert technical support

- Replacement or refund for products not performing as stated on the datasheet
- Valid for 12 months from date of delivery
- Response to your inquiry within 24 hours
- We provide support in Chinese, English, French, German, Japanese and Spanish
- Extensive multi-media technical resources to help you
- We investigate all quality concerns to ensure our products perform to the highest standards

If the product does not perform as described on this datasheet, we will offer a refund or replacement. For full details of the Abpromise, please visit <https://www.abcam.com/abpromise> or contact our technical team.

Terms and conditions

- Guarantee only valid for products bought direct from Abcam or one of our authorized distributors