

Recombinant Human RASA1 protein ab116964

1 Image

Description

Product name Recombinant Human RASA1 protein

Expression system Wheat germ

Accession **P20936-2**

Protein length Full length protein

Animal free No

Nature Recombinant

Species Human

Sequence

```
MKGWYHGKLDRTIAEERLRQAGKSGSYLIRESDRRPGSFV
LSFLSQMNVV
NHFRIAMCGDYIGGRRFSSLSDLIGYYSHVSCLLKGEKLL
YPVAPPEP
VEDRRRVRAILPYTKVPDTDEISFLKGDMFMHNELEDGW
MWVTNLRTDE
QGLVEDLVEEVGREEDPHEGKMFHKGKISKQEAYNLLMT
VGQVCSFLVR
PSDNTPGDYSLYFRTNENIQRFKICPTPNNQFMMGGRYYN
SIGDIIDHYR
KEQVEGYLKEPVPMQDQEQLNDTVDGKEIYNTIRRTK
DAFYKNVK
KGYLLKKGKGRWKNLYFILEGSDAQLYFESEKRATKPK
GLIDLSVCSV
YVVHDSLFGRPNCFQMVVQHFSEEHYFYFAGETPEQAED
WMKGLQAFCN
LRKSSPGTSNKRLRQVSSLVLHIEEAHKLPVKHFTNPYCN
YLNSVQVAK
THAREGQNPVWSEEFVFDLPPDINRFEITLSNKTKKSKD
PDILFMRCQL
SRLQKGHATDEWFLSSHIPLKGIPEGSLRVRARYSMEKIM
PEEEYSEFK
ELILQKELHVYALSHVCGQDRLLASILLRIFLHEKLESLLL
CTLNDRE
ISMEDEATTLFRATTLASTLMEQYMKATATQFVHHALKDSI
LKIMESKQS
CELSPSKLEKNEDVNTNLTHLLNLSSELVEKIFMASEILPPT
LRYYGCL
```

QKSVQHKWPTNTTMRTRVVSGFVFLRLICPAILNPRMFNIIS
DSPSPIAA
RTLILVAKSVQNLANLVEFGAKEPYMEGVNPFIKSNKHRMI
MFLDELGNV
PELPDTTEHSRTDLSRDLAALHEICVAHSDELRTLSNERG
AQQHVLKLL AITELLQKQKQYTKTNDVR

Predicted molecular weight 122 kDa including tags
Amino acids 1 to 870

Specifications

Our **Abpromise guarantee** covers the use of **ab116964** in the following tested applications.

The application notes include recommended starting dilutions; optimal dilutions/concentrations should be determined by the end user.

Applications ELISA
SDS-PAGE
Western blot

Form Liquid

Preparation and Storage

Stability and Storage Shipped on dry ice. Upon delivery aliquot and store at -80°C. Avoid freeze / thaw cycles.
pH: 8.00
Constituents: 0.3% Glutathione, 0.79% Tris HCl

General Info

Function Inhibitory regulator of the Ras-cyclic AMP pathway. Stimulates the GTPase of normal but not oncogenic Ras p21.

Tissue specificity In placental villi, detected only in the trophoblast layer (cytotrophoblast and syncytiotrophoblast). Not detected in stromal, endothelial or Hofbauer cells (at protein level).

Involvement in disease Note=Mutations in the SH2 domain of RASA seem to be oncogenic and cause basal cell carcinomas.
Defects in RASA1 are the cause of capillary malformation-arteriovenous malformation (CMAVM) [MIM:608354]. CMAVM is a disorder characterized by atypical capillary malformations that are multiple, small, round to oval in shape and pinkish red in color. These capillary malformations are associated with either arteriovenous malformation, arteriovenous fistula, or Parkes Weber syndrome.
Defects in RASA1 are a cause of Parkes Weber syndrome (PKWS) [MIM:608355]. PKWS is a disorder characterized by a cutaneous flush with underlying multiple micro-arteriovenous fistulas, in association with soft tissue and skeletal hypertrophy of the affected limb.

Sequence similarities Contains 1 C2 domain.
Contains 1 PH domain.
Contains 1 Ras-GAP domain.
Contains 2 SH2 domains.
Contains 1 SH3 domain.

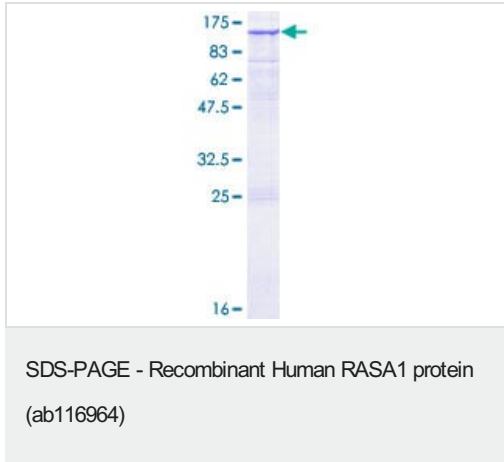
Post-translational modifications

The N-terminus is blocked.

Cellular localization

Cytoplasm.

Images



12.5% SDS-PAGE showing ab116964 at approximately 121.77kDa stained with Coomassie Blue.

Please note: All products are "FOR RESEARCH USE ONLY. NOT FOR USE IN DIAGNOSTIC PROCEDURES"

Our Abpromise to you: Quality guaranteed and expert technical support

- Replacement or refund for products not performing as stated on the datasheet
- Valid for 12 months from date of delivery
- Response to your inquiry within 24 hours
- We provide support in Chinese, English, French, German, Japanese and Spanish
- Extensive multi-media technical resources to help you
- We investigate all quality concerns to ensure our products perform to the highest standards

If the product does not perform as described on this datasheet, we will offer a refund or replacement. For full details of the Abpromise, please visit <https://www.abcam.com/abpromise> or contact our technical team.

Terms and conditions

- Guarantee only valid for products bought direct from Abcam or one of our authorized distributors