

Product datasheet

Recombinant Human RBP3/IRBP protein (His tag)
ab215617

1 Image

Description	
Product name	Recombinant Human RBP3/IRBP protein (His tag)
Purity	> 95 % SDS-PAGE.
Endotoxin level	< 1.000 Eu/µg
Expression system	Escherichia coli
Accession	<u>P10745</u>
Protein length	Protein fragment
Animal free	No
Nature	Recombinant
Species	Human
Sequence	MNHKVHHHHHHMTLRSALPGVVHCLQEVLKDYYTLVDRV PTLLQHLASMD FSTVVSEEDLVTKLN AGLQAASEDPRLLVRAIGPTETPSWPAPDAAAEDSPGVA PELPEDEAIRQ ALVDSVFQVSVLPGN VGYLRFDSFADASVLGVLAPYVLRQVWEPLQDTEHLIMDL RHNPGGPSSA VPLLLSYFQGPEAGP VHLFTTYDRRTNITQEHFSHMELPGPRYSTQRGVYLLTSHR TATAAEEFA FLMQSLGWATLVGEI TAGNLLHTRTPLLDTPEGSLALTPVLTFDNHGEAWLGG GVVPDAVL AEEALDKAQEVL
Predicted molecular weight	35 kDa including tags
Amino acids	321 to 630
Tags	His tag N-Terminus

Specifications	
Our <u>Abpromise guarantee</u> covers the use of ab215617 in the following tested applications.	
The application notes include recommended starting dilutions; optimal dilutions/concentrations should be determined by the end user.	
Applications	SDS-PAGE
Form	Lyophilized

Additional notes

Previously labelled as RBP3.

Preparation and Storage

Stability and Storage

Shipped at 4°C. Store at -20°C long term. Avoid freeze / thaw cycle.

pH: 7.40

Constituent: 100% PBS

Reconstitution

Reconstitute to a concentration less than 100 µg/ml. Dissolve the lyophilized protein in ddH₂O.

Lyophilized protein should be stored at < -20°C, though stable at room temperature for 3 weeks.

Reconstituted protein solution can be stored at 4-7°C for 2-7 days.

General Info

Function

IRBP shuttles 11-cis and all trans retinoids between the retinol isomerase in the pigment epithelium and the visual pigments in the photoreceptor cells of the retina.

Sequence similarities

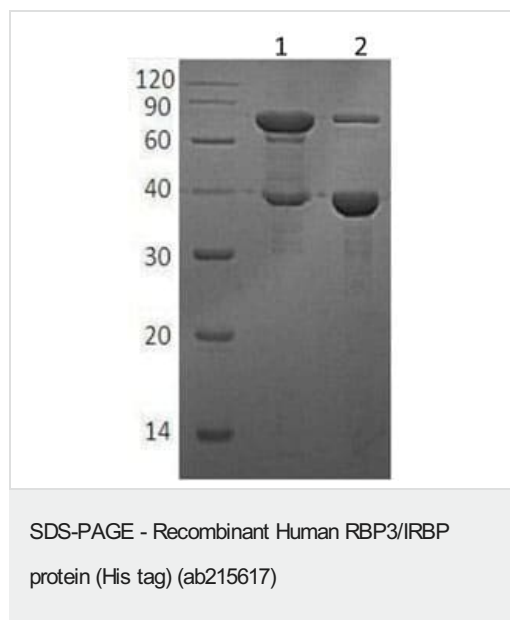
Belongs to the peptidase S41A family.

Cellular localization

Secreted > extracellular space > extracellular matrix > interphotoreceptor matrix.

Interphotoreceptor matrix that permeates the space between the retina and the contiguous layer of pigment epithelium cells.

Images



Lane 1 - Non-Reducing

Lane 2 - Reducing

Please note: All products are "FOR RESEARCH USE ONLY. NOT FOR USE IN DIAGNOSTIC PROCEDURES"

Our Abpromise to you: Quality guaranteed and expert technical support

- Replacement or refund for products not performing as stated on the datasheet
- Valid for 12 months from date of delivery

- Response to your inquiry within 24 hours
- We provide support in Chinese, English, French, German, Japanese and Spanish
- Extensive multi-media technical resources to help you
- We investigate all quality concerns to ensure our products perform to the highest standards

If the product does not perform as described on this datasheet, we will offer a refund or replacement. For full details of the Abpromise, please visit <https://www.abcam.com/abpromise> or contact our technical team.

Terms and conditions

- Guarantee only valid for products bought direct from Abcam or one of our authorized distributors