

Recombinant Human RBPJL protein ab161411

1 Image

Description

Product name	Recombinant Human RBPJL protein
Expression system	Wheat germ
Accession	<u>Q9UBG7</u>
Protein length	Full length protein
Animal free	No
Nature	Recombinant
Species	Human
Sequence	MDPAGAADPSVPPNPLTHLSLQDRSEMQLQSEADRRSL PGTWTRSSPEHT TILRGGVRRCLQQCEQTVRILHAKVAQKSYGNEKRFFCP PPCVYLSGPG WRVKPGQDQAHQAGETGPTVCGYMGLDSASGSATETQK LNFEQQPDSREF GCAKTLYISDADKRKHFRLLVRLVLRGGRELGTFFHSRLIKVI SKPSQKKQ SLKNTDLCISSGSKVSLFNRLRSQTVSTRYLSVEDGAFVA SARQWAAFTL HLADGHSAQGDFPPREGYVRYGSLVQLVCTVTGITLPPMII RKVAKQCAL LDVDEPISQLHKCAFQFPGSPGGGGTYLCLATEKVVQF QASPCPKEANR ALLNDSSCWTIIGTESVEFSFSTSLACTLEPVTVPVPLISTLE LSGGGDVA TLELHGENFHAGLKVWFGDVEAETMYRSPRSLVCVVPDV AAFCSDWRWLR APITIPMSLVRADGLFYPSAFSFTYTPEYSVRPGHPGVPEP ATDADALLE SIHQEFTRTNFHLFIQT
Amino acids	1 to 517
Tags	GST tag N-Terminus

Specifications

Our **Abpromise guarantee** covers the use of **ab161411** in the following tested applications.

The application notes include recommended starting dilutions; optimal dilutions/concentrations should be determined by the end user.

Applications	ELISA
	Western blot
Form	Liquid
Additional notes	This product was previously labelled as RBPSUHL.

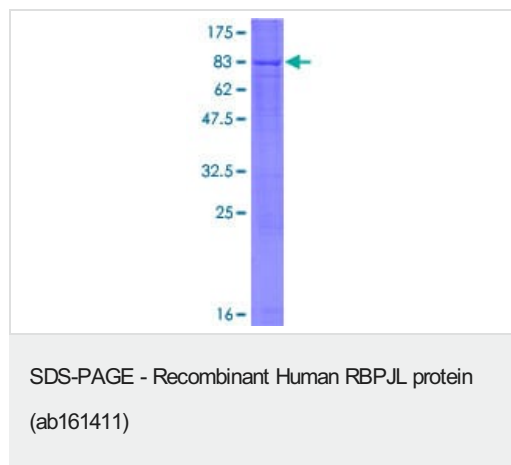
Preparation and Storage

Stability and Storage	Shipped on dry ice. Upon delivery aliquot and store at -80°C. Avoid freeze / thaw cycles.
	pH: 8.00
	Constituents: 0.31% Glutathione, 0.79% Tris HCl

General Info

Relevance	RBPSUHL is a protein similar in sequence to the mouse RPB-L protein and Drosophila suppressor of hairless protein. In mouse, recombining binding protein L (RBP-L) is a transcription factor that binds to DNA sequences almost identical to that bound by the Notch receptor signalling pathway transcription factor RBP-J. However, unlike RBP-J, RBP-L does not interact with Notch receptors. RBP-L has been shown to activate transcription in concert with Epstein-Barr virus nuclear antigen-2 (EBNA2).
Cellular localization	Nuclear

Images



ab161411 on a 12.5% SDS-PAGE stained with Coomassie Blue.

Please note: All products are "FOR RESEARCH USE ONLY. NOT FOR USE IN DIAGNOSTIC PROCEDURES"

Our Abpromise to you: Quality guaranteed and expert technical support

- Replacement or refund for products not performing as stated on the datasheet
- Valid for 12 months from date of delivery

- Response to your inquiry within 24 hours
- We provide support in Chinese, English, French, German, Japanese and Spanish
- Extensive multi-media technical resources to help you
- We investigate all quality concerns to ensure our products perform to the highest standards

If the product does not perform as described on this datasheet, we will offer a refund or replacement. For full details of the Abpromise, please visit <https://www.abcam.com/abpromise> or contact our technical team.

Terms and conditions

- Guarantee only valid for products bought direct from Abcam or one of our authorized distributors