

Product datasheet

Recombinant Human RCC1 protein ab90625

★★★★★ [1 Abreviews](#) [2 References](#) [1 Image](#)

Description

Product name	Recombinant Human RCC1 protein
Purity	> 95 % SDS-PAGE.
Expression system	Escherichia coli
Protein length	Full length protein
Animal free	No
Nature	Recombinant
Species	Human

Specifications

Our **Abpromise guarantee** covers the use of **ab90625** in the following tested applications.

The application notes include recommended starting dilutions; optimal dilutions/concentrations should be determined by the end user.

Applications	SDS-PAGE Western blot
Form	Liquid

Preparation and Storage

Stability and Storage	Shipped on dry ice. Upon delivery aliquot and store at -80°C. Avoid freeze / thaw cycles. pH: 7.60 Constituents: 0.29% Sodium chloride, 0.476% HEPES, 0.0308% DTE (1,4-Dithioerythritol)
------------------------------	--

General Info

Function	Guanine-nucleotide releasing factor that promotes the exchange of Ran-bound GDP by GTP. Involved in the regulation of onset of chromosome condensation in the S phase. Binds both to the nucleosomes and double-stranded DNA. RCC1-Ran complex (together with other proteins) acts as a component of a signal transmission pathway that detects unreplicated DNA. Plays a key role in nucleo-cytoplasmic transport, mitosis and nuclear-envelope assembly.
-----------------	--

Sequence similarities

Contains 7 RCC1 repeats.

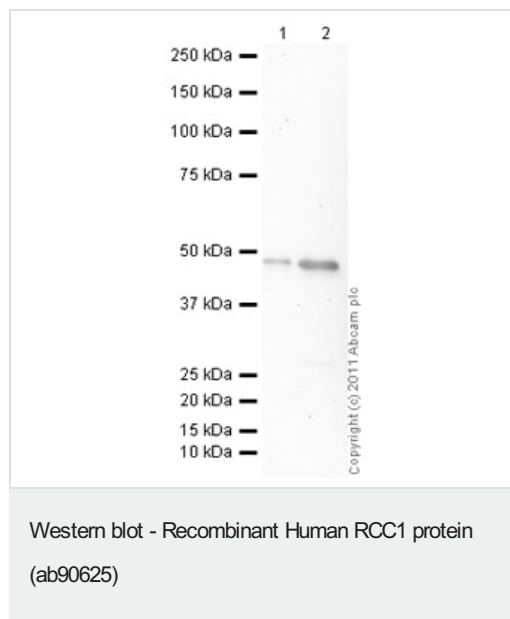
Post-translational modifications

N-terminal methylation by METTL11A/NTM1 is required for binding double-stranded DNA and stable chromatin association. Di- and trimethylation produce a permanent positive charge on the amino group, which facilitate electrostatic binding to the phosphate groups on DNA, while inhibiting histone-binding. Methylated tail helps retain RCC1 on chromosomes during nucleotide exchange on Ran.

Cellular localization

Nucleus. Cytoplasm. Becomes dispersed throughout the cytoplasm during mitosis.

Images



All lanes : Anti-RCC1 antibody (**ab70749**) at 1/2000 dilution

Lane 1 : Recombinant Human RCC1 protein (ab90625) at 0.01 µg

Lane 2 : Recombinant Human RCC1 protein (ab90625) at 0.1 µg

Secondary

All lanes : Rabbit polyclonal to Goat IgG - H&L - Pre-Adsorbed (HRP) (**ab65486**) at 1/3000 dilution (Rabbit polyclonal to Goat IgG - H&L - Pre-Adsorbed (HRP))

Developed using the ECL technique.

Performed under reducing conditions.

Exposure time: 8 minutes

Please note: All products are "FOR RESEARCH USE ONLY. NOT FOR USE IN DIAGNOSTIC PROCEDURES"

Our Abpromise to you: Quality guaranteed and expert technical support

- Replacement or refund for products not performing as stated on the datasheet
- Valid for 12 months from date of delivery
- Response to your inquiry within 24 hours
- We provide support in Chinese, English, French, German, Japanese and Spanish
- Extensive multi-media technical resources to help you
- We investigate all quality concerns to ensure our products perform to the highest standards

If the product does not perform as described on this datasheet, we will offer a refund or replacement. For full details of the Abpromise, please visit <https://www.abcam.com/abpromise> or contact our technical team.

Terms and conditions

- Guarantee only valid for products bought direct from Abcam or one of our authorized distributors