

## Product datasheet

# Recombinant Human RDHE2 protein ab140552

1 Image

### Description

<b>Product name</b>	Recombinant Human RDHE2 protein
<b>Purity</b>	> 90 % SDS-PAGE. ab140552 is purified using conventional chromatography techniques.
<b>Expression system</b>	Escherichia coli
<b>Accession</b>	<u><b>Q8N3Y7</b></u>
<b>Protein length</b>	Protein fragment
<b>Animal free</b>	No
<b>Nature</b>	Recombinant
<b>Species</b>	Human
<b>Sequence</b>	<p>MGSSHHHHHH SSGLVPRGSH MGSPKPRKNV            AGEMLITGA GSGLGRLLAL QFARLGSVLV LWDINKEGNE            ETCKMAREAG ATRVHAYTCD CSQKEGVYRV            ADQVKKEVGD VSILINNAGI VTGKKFLDCP            DELMEKSFDV NFKAHLWTYK AFLPAMIAND            HGHLVCISSS AGLSGVNGLA DYCASKFAAF            GFAESV FVET FVQKQKGIKT TMC PFFIKT GMFEGCTTGC            PSLLEPK YAVEKVEAI LQEKMYLYMP K</p>
<b>Predicted molecular weight</b>	28 kDa including tags
<b>Amino acids</b>	32 to 269
<b>Tags</b>	His tag N-Terminus

### Specifications

Our **Abpromise guarantee** covers the use of **ab140552** in the following tested applications.

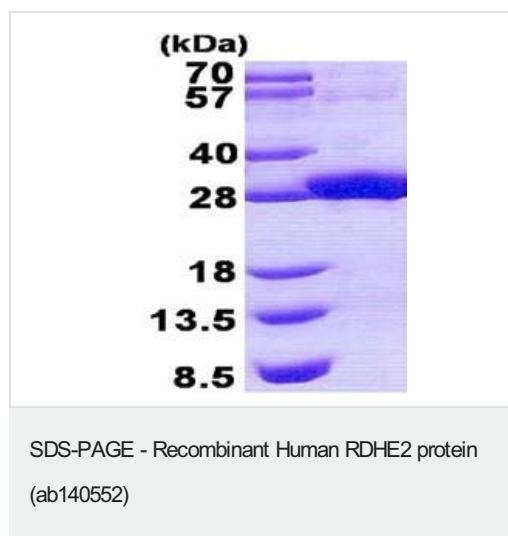
The application notes include recommended starting dilutions; optimal dilutions/concentrations should be determined by the end user.

<b>Applications</b>	SDS-PAGE Mass Spectrometry
<b>Mass spectrometry</b>	MALDI-TOF
<b>Form</b>	Liquid

### Preparation and Storage

<b>Stability and Storage</b>	Shipped at 4°C. Store at +4°C short term (1-2 weeks). Upon delivery aliquot. Store at -20°C or -80°C. Avoid freeze / thaw cycle.  pH: 8.00 Constituents: 0.02% DTT, 0.32% Tris HCl, 10% Glycerol (glycerin, glycerine), 0.88% Sodium chloride
<b>General Info</b>	
<b>Function</b>	Oxidoreductase with strong preference for NAD. Active in both the oxidative and reductive directions. Oxidizes all-trans-retinol in all-trans-retinaldehyde. No activity was detected with 11-cis-retinol or 11-cis-retinaldehyde as substrates with either NAD <sup>+</sup> /NADH or NADP <sup>+</sup> /NADPH.
<b>Tissue specificity</b>	Detected in adult lung. Detected at low levels in adult brain, heart, testis, placenta, cervix, pancreas, uterus, stomach, rectum, small intestine, colon, esophagus, thymus, skin, and skin keratinocyte. Expression is higher in psoriasis lesions relative to unaffected skin from psoriasis patients. Detected in fetal kidney, skin and lung.
<b>Pathway</b>	Cofactor metabolism; retinol metabolism.
<b>Sequence similarities</b>	Belongs to the short-chain dehydrogenases/reductases (SDR) family.
<b>Cellular localization</b>	Endoplasmic reticulum membrane.

## Images



15% SDS-PAGE analysis of ab140552 (3µg).

**Please note:** All products are "FOR RESEARCH USE ONLY. NOT FOR USE IN DIAGNOSTIC PROCEDURES"

## Our Abpromise to you: Quality guaranteed and expert technical support

- Replacement or refund for products not performing as stated on the datasheet
- Valid for 12 months from date of delivery
- Response to your inquiry within 24 hours
- We provide support in Chinese, English, French, German, Japanese and Spanish

- Extensive multi-media technical resources to help you
- We investigate all quality concerns to ensure our products perform to the highest standards

If the product does not perform as described on this datasheet, we will offer a refund or replacement. For full details of the Abpromise, please visit <https://www.abcam.com/abpromise> or contact our technical team.

### **Terms and conditions**

---

- Guarantee only valid for products bought direct from Abcam or one of our authorized distributors