

## Product datasheet

# Recombinant Human Relaxin 2/RLN2 protein (His tag) ab219490

[1 Image](#)

### Description

<b>Product name</b>	Recombinant Human Relaxin 2/RLN2 protein (His tag)
<b>Purity</b>	> 85 % SDS-PAGE. Affinity purified
<b>Endotoxin level</b>	< 1.000 Eu/μg
<b>Expression system</b>	Baculovirus infected insect cells
<b>Accession</b>	<b><u>P04090</u></b>
<b>Protein length</b>	Full length protein
<b>Animal free</b>	No
<b>Nature</b>	Recombinant
<b>Species</b>	Human
<b>Sequence</b>	ADPDSWMEEV IKLCGRELVR AQIAICGMST WSKRSLSQED APQTPRPVAE MPSFINKDT ETINMMSEFV ANLPQELKLT LSEMQPALPQ LQQHVPVLKD SLLFEEFKK LIRNRQSEAA DSSPSELKYL GLDTHSRKKR QLYSALANKC CHVGCTKRSL ARFCHHHHHH
<b>Predicted molecular weight</b>	19 kDa including tags
<b>Amino acids</b>	25 to 185
<b>Tags</b>	His tag C-Terminus
<b>Additional sequence information</b>	Mature full length form without initial signal peptide.

### Specifications

Our **Abpromise guarantee** covers the use of **ab219490** in the following tested applications.

The application notes include recommended starting dilutions; optimal dilutions/concentrations should be determined by the end user.

<b>Applications</b>	SDS-PAGE
<b>Form</b>	Liquid
<b>Additional notes</b>	This product was previously labelled as Relaxin 2

## Preparation and Storage

### Stability and Storage

Shipped at 4°C. Store at +4°C short term (1-2 weeks). Upon delivery aliquot. Store at -20°C or -80°C. Avoid freeze / thaw cycle.

pH: 7.40

Constituents: PBS, 10% Glycerol (glycerin, glycerine)

## General Info

### Function

Relaxin is an ovarian hormone that acts with estrogen to produce dilatation of the birth canal in many mammals. May be involved in remodeling of connective tissues during pregnancy, promoting growth of pubic ligaments and ripening of the cervix.

### Tissue specificity

Isoform 1 is expressed in the ovary during pregnancy. Also expressed in placenta, decidua and prostate. Isoform 2 is relatively abundant in placenta. It is in much lower abundance in the prostate gland. Not detected in the ovary.

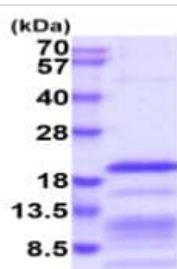
### Sequence similarities

Belongs to the insulin family.

### Cellular localization

Secreted.

## Images



15% SDS-PAGE - Recombinant Human Relaxin 2/RLN2 protein (His tag) (ab219490) at 3 µg.

SDS-PAGE - Recombinant Human Relaxin 2/RLN2 protein (His tag) (ab219490)

**Please note:** All products are "FOR RESEARCH USE ONLY. NOT FOR USE IN DIAGNOSTIC PROCEDURES"

## Our Abpromise to you: Quality guaranteed and expert technical support

- Replacement or refund for products not performing as stated on the datasheet
- Valid for 12 months from date of delivery
- Response to your inquiry within 24 hours
- We provide support in Chinese, English, French, German, Japanese and Spanish
- Extensive multi-media technical resources to help you
- We investigate all quality concerns to ensure our products perform to the highest standards

If the product does not perform as described on this datasheet, we will offer a refund or replacement. For full details of the Abpromise, please visit <https://www.abcam.com/abpromise> or contact our technical team.

#### **Terms and conditions**

---

- Guarantee only valid for products bought direct from Abcam or one of our authorized distributors