

## Product datasheet

# Recombinant Human Renalase protein ab132381

1 Image

### Description

<b>Product name</b>	Recombinant Human Renalase protein	
<b>Expression system</b>	Wheat germ	
<b>Accession</b>	<u><b>Q5VYX0</b></u>	
<b>Protein length</b>	Full length protein	
<b>Animal free</b>	No	
<b>Nature</b>	Recombinant	
<b>Species</b>	Human	
<b>Sequence</b>	MAQVLVAGAMTGSLSAALLRRQTSGLPLYLAVWDKADDS GGRMTTACSPH NPQCTADLGAQYITCTPHYAKKHQRFYDELLAYGVLRLPLS SPIEGMVMKE GDCNFVAPQGISSIIKHYLKESGAEVYFRHRVTQINLRDDK WEVSKQTGS PEQFDLIVLTMVPVEILQLQGDITTLISECQRQQLEAVSYSS RYALGLFY EAGTKIDVPWAGQYITSNPCIRFVSIDNKKRNIESSEIGPSL VIHTTVPF GVTYLEHSIEDVQELVFQQLLENILPGLPQPIATKCQKWRHS QVTNAAANC PGQMTLHHKPFLACGGDGFTQSNFDGCITSALCVLEALK NYI	
<b>Predicted molecular weight</b>	64 kDa including tags	
<b>Amino acids</b>	1 to 342	

### Specifications

Our **Abpromise guarantee** covers the use of **ab132381** in the following tested applications.

The application notes include recommended starting dilutions; optimal dilutions/concentrations should be determined by the end user.

<b>Applications</b>	Western blot
	ELISA
	SDS-PAGE
<b>Form</b>	Liquid

## Additional notes

## Preparation and Storage

### Stability and Storage

Shipped on dry ice. Upon delivery aliquot and store at -80°C. Avoid freeze / thaw cycles.

pH: 8.00

Constituents: 0.31% Glutathione, 0.79% Tris HCl

## General Info

### Function

Probable FAD-dependent amine oxidase secreted by the kidney, which circulates in blood and modulates cardiac function and systemic blood pressure. Degrades catecholamines such as dopamine, norepinephrine and epinephrine in vitro. Lowers blood pressure in vivo by decreasing cardiac contractility and heart rate and preventing a compensatory increase in peripheral vascular tone, suggesting a causal link to the increased plasma catecholamine and heightened cardiovascular risk. High concentrations of catecholamines activate plasma renalase and promotes its secretion and synthesis (By similarity). According to PubMed:17385068, is unlikely that renalase has physiologically relevant catecholamine-oxidizing activity.

### Tissue specificity

Secreted into the blood by the kidney. Highly expressed in the kidney, expressed at lower level in heart, skeletal muscle and small intestine. Its plasma concentration is markedly reduced in patients with end-stage renal disease, as compared with healthy subjects.

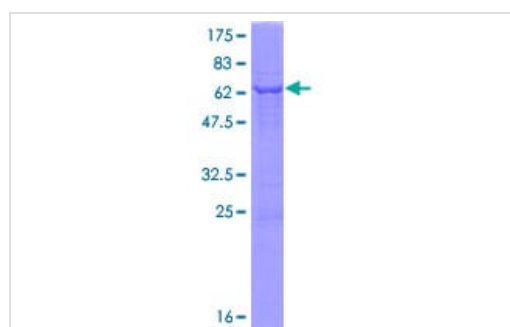
### Sequence similarities

Belongs to the renalase family.

### Cellular localization

Secreted.

## Images



12.5% SDS-PAGE analysis of ab132381 stained with Coomassie Blue.

SDS-PAGE - Recombinant Human Renalase protein  
(ab132381)

**Please note:** All products are "FOR RESEARCH USE ONLY. NOT FOR USE IN DIAGNOSTIC PROCEDURES"

## Our Abpromise to you: Quality guaranteed and expert technical support

- Replacement or refund for products not performing as stated on the datasheet

- Valid for 12 months from date of delivery
- Response to your inquiry within 24 hours
- We provide support in Chinese, English, French, German, Japanese and Spanish
- Extensive multi-media technical resources to help you
- We investigate all quality concerns to ensure our products perform to the highest standards

If the product does not perform as described on this datasheet, we will offer a refund or replacement. For full details of the Abpromise, please visit <https://www.abcam.com/abpromise> or contact our technical team.

### **Terms and conditions**

---

- Guarantee only valid for products bought direct from Abcam or one of our authorized distributors