

Product datasheet

Recombinant Human Renalase protein (denatured)
ab134535

1 Image

Description	
Product name	Recombinant Human Renalase protein (denatured)
Purity	> 90 % SDS-PAGE.
Expression system	Escherichia coli
Accession	<u>Q5VYX0</u>
Protein length	Full length protein
Animal free	No
Nature	Recombinant
Species	Human
Sequence	MGSSHHHHHHSSGLVPRGSHMGSMALLRRQTSGPLYLA VWDKAEDSGGRM TTACSPHPNPQCTADLGAQYITCTPHYAKKHQRFYDELLAY GVLRLSSPI EGMVMKEGDCNFBVAPQGSIKHYLKESGAEVYFRHRVT QINLRDDKWE VSKQTGSPEQFDLVLTPVPPEILQLQGDITLISECQRQQL EAVSYSSR YALGLFYEAGTKIDVPWAGQYITSNPCIRFVSIDNKKRNIES SEIGPSLV IHTTVPFVGVTYLEHSIEDVQELVFQQLLENILPGLPQPIATKC QKWRHSQV TNAAANCPGQMTLHHKPFLACGGDGFTQSNFDGCITSAL CVLEALKNYI
Predicted molecular weight	39 kDa including tags
Amino acids	18 to 342
Tags	His tag N-Terminus

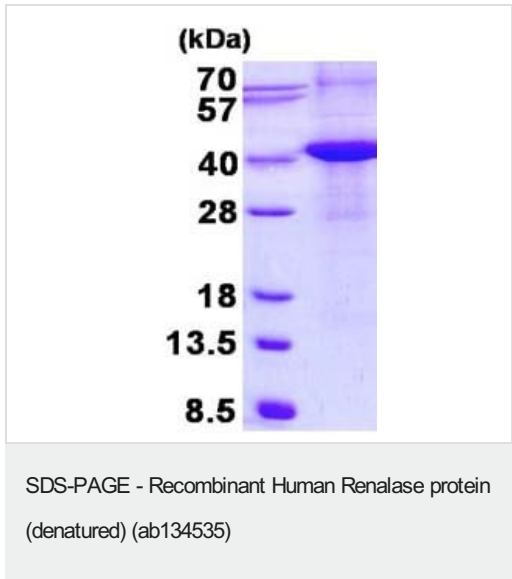
Specifications

Our **Abpromise guarantee** covers the use of **ab134535** in the following tested applications.

The application notes include recommended starting dilutions; optimal dilutions/concentrations should be determined by the end user.

Applications	SDS-PAGE
Form	Liquid
Preparation and Storage	
Stability and Storage	<p>Shipped at 4°C. Store at +4°C short term (1-2 weeks). Upon delivery aliquot. Store at -20°C or -80°C. Avoid freeze / thaw cycle.</p> <p>pH: 8.00</p> <p>Constituents: 12.01% Urea, 0.32% Tris HCl, 10% Glycerol (glycerin, glycerine)</p>
General Info	
Function	<p>Probable FAD-dependent amine oxidase secreted by the kidney, which circulates in blood and modulates cardiac function and systemic blood pressure. Degrades catecholamines such as dopamine, norepinephrine and epinephrine in vitro. Lowers blood pressure in vivo by decreasing cardiac contractility and heart rate and preventing a compensatory increase in peripheral vascular tone, suggesting a causal link to the increased plasma catecholamine and heightened cardiovascular risk. High concentrations of catecholamines activate plasma renalase and promotes its secretion and synthesis (By similarity). According to PubMed:17385068, is unlikely that renalase has physiologically relevant catecholamine-oxidizing activity.</p>
Tissue specificity	<p>Secreted into the blood by the kidney. Highly expressed in the kidney, expressed at lower level in heart, skeletal muscle and small intestine. Its plasma concentration is markedly reduced in patients with end-stage renal disease, as compared with healthy subjects.</p>
Sequence similarities	<p>Belongs to the renalase family.</p>
Cellular localization	<p>Secreted.</p>

Images



15% SDS-PAGE analysis of 3 µg ab134535.

Please note: All products are "FOR RESEARCH USE ONLY. NOT FOR USE IN DIAGNOSTIC PROCEDURES"

Our Abpromise to you: Quality guaranteed and expert technical support

- Replacement or refund for products not performing as stated on the datasheet
- Valid for 12 months from date of delivery
- Response to your inquiry within 24 hours

- We provide support in Chinese, English, French, German, Japanese and Spanish
- Extensive multi-media technical resources to help you
- We investigate all quality concerns to ensure our products perform to the highest standards

If the product does not perform as described on this datasheet, we will offer a refund or replacement. For full details of the Abpromise, please visit <https://www.abcam.com/abpromise> or contact our technical team.

Terms and conditions

- Guarantee only valid for products bought direct from Abcam or one of our authorized distributors