

Product datasheet

Recombinant Human Rheb2 protein ab165171

1 Image

Description

Product name	Recombinant Human Rheb2 protein
Expression system	Wheat germ
Protein length	Full length protein
Animal free	No
Nature	Recombinant
Species	Human
Sequence	MPLVRYRKVVILGYRCVGKTS LAHQFVEGEFSEGYDPTVE NTYSKMTLG KDEFHLHLVDTAGQDEYSILPYSFIIGVHGYLVYSVTS LHS FQVIESLY QKLHEGHGKTRVPVVLVGNKADLSPEREVQAVEGKKLA ESWGATFMESSA RENQLTQGIFTKVIQEIARVENSYGQERRCHLM
Amino acids	1 to 183
Tags	GST tag N-Terminus

Specifications

Our **Abpromise guarantee** covers the use of **ab165171** in the following tested applications.

The application notes include recommended starting dilutions; optimal dilutions/concentrations should be determined by the end user.

Applications	ELISA Western blot
Form	Liquid
Additional notes	This product was previously labelled as RHEBL1.

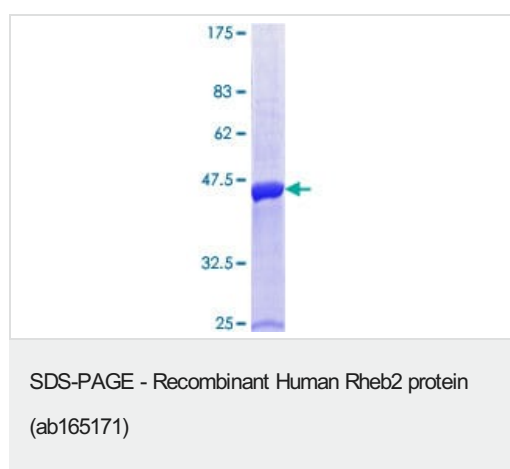
Preparation and Storage

Stability and Storage	Shipped on dry ice. Upon delivery aliquot and store at -80°C. Avoid freeze / thaw cycles. pH: 8.00 Constituents: 0.31% Glutathione, 0.79% Tris HCl
------------------------------	----------------------------------------------------------------------------------------------------------------------------------------------------------

General Info

Function	Binds GTP and exhibits intrinsic GTPase activity. May activate NF-kappa-B-mediated gene transcription. Promotes signal transduction through MTOR, activates RPS6KB1, and is a downstream target of the small GTPase-activating proteins TSC1 and TSC2.
Tissue specificity	Ubiquitously expressed. Expression increased at least 2-fold in several tumor cell lines.
Sequence similarities	Belongs to the small GTPase superfamily. Rheb family.
Cellular localization	Cell membrane. Cytoplasm.

Images



ab165171 on a 12.5% SDS-PAGE stained with Coomassie Blue.

Please note: All products are "FOR RESEARCH USE ONLY. NOT FOR USE IN DIAGNOSTIC PROCEDURES"

Our Abpromise to you: Quality guaranteed and expert technical support

- Replacement or refund for products not performing as stated on the datasheet
- Valid for 12 months from date of delivery
- Response to your inquiry within 24 hours
- We provide support in Chinese, English, French, German, Japanese and Spanish
- Extensive multi-media technical resources to help you
- We investigate all quality concerns to ensure our products perform to the highest standards

If the product does not perform as described on this datasheet, we will offer a refund or replacement. For full details of the Abpromise, please visit <https://www.abcam.com/abpromise> or contact our technical team.

Terms and conditions

- Guarantee only valid for products bought direct from Abcam or one of our authorized distributors