

Product datasheet

Recombinant Human RHOB protein ab107139

[2 References](#) [1 Image](#)

Description

Product name	Recombinant Human RHOB protein
Purity	> 90 % SDS-PAGE. ab107139 is purified using conventional chromatography techniques.
Expression system	Escherichia coli
Accession	<u>P62745</u>
Protein length	Full length protein
Animal free	No
Nature	Recombinant
Species	Human
Sequence	MGSSHHHHHHSSGLVPRGSHMAAIRKKLVVVGDGACGK TCLLMFSKDEF PEVYVPTVFENYVADIEVDGKQVELALWDTAGQEDYDRL RPLSYPTDVI LMCFSDSPDSLENIPEKWWPEVKHFCPNVPILVANKKD LRSDEHVRTE LARMKQEPVRTDDGRAMAVRIQAYDYLECSAKTKEGVRE VFETATRAALQ KRYGSQNGCINCC
Predicted molecular weight	24 kDa including tags
Amino acids	1 to 193
Tags	His tag N-Terminus

Specifications

Our **Abpromise guarantee** covers the use of **ab107139** in the following tested applications.

The application notes include recommended starting dilutions; optimal dilutions/concentrations should be determined by the end user.

Applications	SDS-PAGE Mass Spectrometry
Mass spectrometry	MALDI-TOF
Form	Liquid

Preparation and Storage

Stability and Storage

Shipped at 4°C. Store at +4°C short term (1-2 weeks). Upon delivery aliquot. Store at -20°C or -80°C. Avoid freeze / thaw cycle.

pH: 8.00

Constituents: 0.0308% DTT, 0.316% Tris HCl, 20% Glycerol (glycerin, glycerine), 1.16% Sodium chloride

General Info

Function

Mediates apoptosis in neoplastically transformed cells after DNA damage. Not essential for development but affects cell adhesion and growth factor signaling in transformed cells. Plays a negative role in tumorigenesis as deletion causes tumor formation. Involved in intracellular protein trafficking of a number of proteins. Targets PKN1 to endosomes and is involved in trafficking of the EGF receptor from late endosomes to lysosomes. Also required for stability and nuclear trafficking of AKT1/AKT which promotes endothelial cell survival during vascular development.

Sequence similarities

Belongs to the small GTPase superfamily. Rho family.

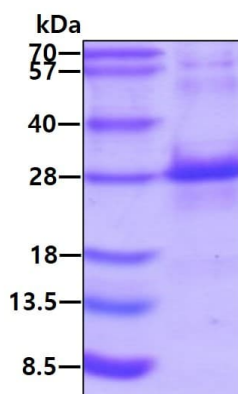
Post-translational modifications

Prenylation specifies the subcellular location of RHOB. The farnesylated form is localized to the plasma membrane while the geranylgeranylated form is localized to the endosome.

Cellular localization

Late endosome membrane. Cell membrane. Nucleus. Late endosomal membrane (geranylgeranylated form). Plasma membrane (farnesylated form). Also detected at the nuclear margin and in the nucleus.

Images



SDS-PAGE - Recombinant Human RHOB protein
(ab107139)

SDS-PAGE analysis of ab107139 (3 µg) under reducing conditions and visualized by coomassie blue stain.

Please note: All products are "FOR RESEARCH USE ONLY. NOT FOR USE IN DIAGNOSTIC PROCEDURES"

Our Abpromise to you: Quality guaranteed and expert technical support

- Replacement or refund for products not performing as stated on the datasheet

- Valid for 12 months from date of delivery
- Response to your inquiry within 24 hours
- We provide support in Chinese, English, French, German, Japanese and Spanish
- Extensive multi-media technical resources to help you
- We investigate all quality concerns to ensure our products perform to the highest standards

If the product does not perform as described on this datasheet, we will offer a refund or replacement. For full details of the Abpromise, please visit <https://www.abcam.com/abpromise> or contact our technical team.

Terms and conditions

- Guarantee only valid for products bought direct from Abcam or one of our authorized distributors