

Product datasheet

Recombinant human ROR2 protein (Fc Chimera Active) ab221411

2 Images

Description

Product name	Recombinant human ROR2 protein (Fc Chimera Active)		
Biological activity	Immobilized ab221411 at 1 µg/mL (100 µL/well) can bind Anti-ROR2 Antibody, Human IgG1 with a linear range of 2-8 ng/mL.		
Purity	> 95 % SDS-PAGE.		
Endotoxin level	< 1.000 Eu/µg		
Expression system	HEK 293 cells		
Accession	<b>Q01974</b>		
Protein length	Protein fragment		
Animal free	No		
Nature	Recombinant		
Species	Human		
Sequence	EVEVLDPNDPLGPLDGQDGPIPTLKG YFLNFLEPVNNITV QQQTAILHC KVAGNPPPNVRWLKNDAPVVQEPRRIIRKTEYGSRLRIQD LDTTDTGYY QCVATNGMKTITATGVLFVRLGPTHSPNHNFQDDYHEDGF CQPYRGIACA RFIGNRTIYVDSLQMQGEIENRITAAFTMIGTSTHLSDQCSQ FAIPSFCH FVFPLCDARSRTPKPRELCRDECEVLES DLCRQEYTIARS NPLILMRLQL PKCEALPMPESPDAANCMRIGIPAERLGRYHQCYN GSGM DYRG TASTTKS GHQCQPWALQHPSHHLSSSTDFPELGGGHAYCRNPGGQ MEGPWCFTQKNK VRMELCDVPSCSPRDSSKMG		
Predicted molecular weight	68 kDa including tags		
Amino acids	34 to 403		
Tags	Fc tag C-Terminus		
Additional sequence information	Extracellular domain fused with a human IgG1 Fc tag (Pro 100 - Lys 330; P01857) at the C-terminus.		

## Specifications

---

Our **Abpromise guarantee** covers the use of **ab221411** in the following tested applications.

The application notes include recommended starting dilutions; optimal dilutions/concentrations should be determined by the end user.

**Applications** SDS-PAGE

**Form** Lyophilized

## Preparation and Storage

---

**Stability and Storage** Shipped at 4°C. Store at -20°C or -80°C. Avoid freeze / thaw cycle.  
pH: 7.40  
Constituents: 0.61% Tris, 0.75% Glycine, 5% Trehalose, 0.87% Sodium chloride, 0.44% L-Arginine  
  
Lyophilized from 0.22 µm filtered solution.  
  
This product is an active protein and may elicit a biological response in vivo, handle with caution.

**Reconstitution** Reconstitute with sterile deionized water to a concentration of 400 µg/ml.

## General Info

---

**Function** Tyrosine-protein kinase receptor which may be involved in the early formation of the chondrocytes. It seems to be required for cartilage and growth plate development. Phosphorylates YWHAB, leading to induction of osteogenesis and bone formation.

**Involvement in disease** Brachydactyly B1  
Robinow syndrome autosomal recessive

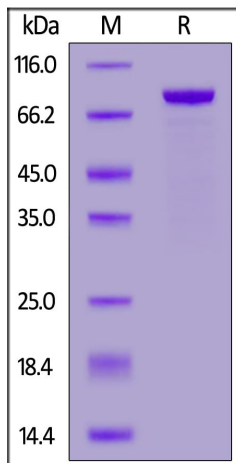
**Sequence similarities** Belongs to the protein kinase superfamily. Tyr protein kinase family. ROR subfamily.  
Contains 1 FZ (frizzled) domain.  
Contains 1 Ig-like C2-type (immunoglobulin-like) domain.  
Contains 1 kringle domain.  
Contains 1 protein kinase domain.

**Developmental stage** Expressed at high levels during early embryonic development. The expression levels drop strongly around day 16 and there are only very low levels in adult tissues.

**Cellular localization** Cell membrane.

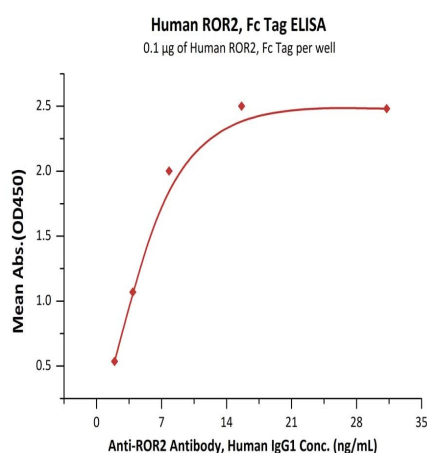
## Images

---



SDS-PAGE - Recombinant human ROR2 protein (Fc Chimera Active) (ab221411)

Human ROR2, Fc Tag (ab221411) on SDS-PAGE under reducing (R) condition. The gel was stained overnight with Coomassie Blue. The purity of the protein is greater than 95%.



ELISA - Recombinant human ROR2 protein (Fc Chimera Active) (ab221411)

Immobilized ab221411 at 1 µg/mL (100 µL/well) can bind Anti-ROR2 Antibody, Human IgG1 with a linear range of 2-8 ng/mL (QC tested).

**Please note:** All products are "FOR RESEARCH USE ONLY. NOT FOR USE IN DIAGNOSTIC PROCEDURES"

### Our Abpromise to you: Quality guaranteed and expert technical support

- Replacement or refund for products not performing as stated on the datasheet
- Valid for 12 months from date of delivery
- Response to your inquiry within 24 hours

- We provide support in Chinese, English, French, German, Japanese and Spanish
- Extensive multi-media technical resources to help you
- We investigate all quality concerns to ensure our products perform to the highest standards

If the product does not perform as described on this datasheet, we will offer a refund or replacement. For full details of the Abpromise, please visit <https://www.abcam.com/abpromise> or contact our technical team.

#### **Terms and conditions**

---

- Guarantee only valid for products bought direct from Abcam or one of our authorized distributors