

## Product datasheet

# Recombinant Human RPN2 protein ab139620

1 Image

### Description

---

**Product name** Recombinant Human RPN2 protein

**Purity** > 90 % SDS-PAGE.

**Expression system** Escherichia coli

**Accession** **P04844**

**Protein length** Protein fragment

**Animal free** No

**Nature** Recombinant

**Species** Human

**Sequence**

```
MGSSHHHHHH SSGLVPRGSH MLTPHYLTK
HDVERLKASL DRPFTNLESA FYSIVGLSSL
GAQVPDAKKA CTYIRSNLDP SNVDSLFIYAA
QASQALSGCE ISISNETKDL LLAAVSEDSS VTQIYHAVAA
LSGFGLPLAS QEALSALTAR LSKEETVLAT
VQALQTASHL SQQADLRISV EEIEDLVARL
DELGGVYLQF EEGLETTALF VAATYKLMDH
VGTEPSIKED QVIQLMNAIF SKKNFESLSE AFSVASAAAV
LSHNRVHVPV VVVPEGSASD THEQAILRLQ
VTNVLSQPLT QATVKLEHAK SVASRATVLQ
KTSFTPVGDV FELNFMNVKF SSGYYDFLVE
VEGDNRYAN TVELRVKIST EVGITNVDLS TVDKDQSIAP
KTTRVTYPAK AKGTFIADSH QNFALFFQLV
DVNTGAELTP HQTFVRLHNQ KTGQEVVFVA
EPDNKNVYKF ELDTSERKIE FDSASGYTL YLIIGDATLK
NPILWNVADV VIKFPEEEAP STVLSQNLFT PKQEIQLFR
EPEKRPPTV
```

**Predicted molecular weight** 59 kDa including tags

**Amino acids** 23 to 540

**Tags** His tag N-Terminus

### Specifications

---

Our **Abpromise guarantee** covers the use of **ab139620** in the following tested applications.

The application notes include recommended starting dilutions; optimal dilutions/concentrations should be determined by the end user.

**Applications** SDS-PAGE

**Form** Liquid

## Preparation and Storage

**Stability and Storage** Shipped at 4°C. Store at +4°C short term (1-2 weeks). Upon delivery aliquot. Store at -20°C or -80°C. Avoid freeze / thaw cycle.

pH: 8.00

Constituents: 0.32% Tris HCl, 10% Glycerol (glycerin, glycerine), 0.58% Sodium chloride

## General Info

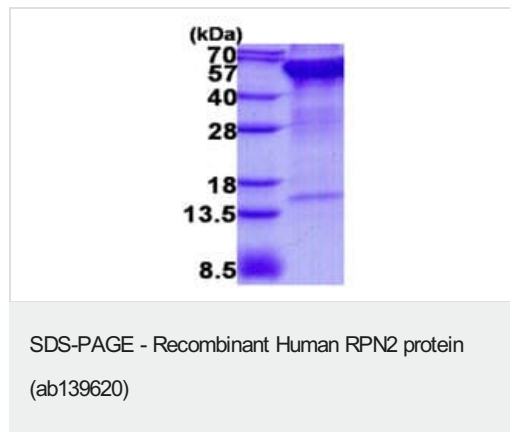
**Function** Essential subunit of N-oligosaccharyl transferase enzyme which catalyzes the transfer of a high mannose oligosaccharide from a lipid-linked oligosaccharide donor to an asparagine residue within an Asn-X-Ser/Thr consensus motif in nascent polypeptide chains.

**Tissue specificity** Expressed in all tissues tested.

**Sequence similarities** Belongs to the SWP1 family.

**Cellular localization** Endoplasmic reticulum membrane.

## Images



15% SDS-PAGE analysis of ab139620 (3µg).

**Please note:** All products are "FOR RESEARCH USE ONLY. NOT FOR USE IN DIAGNOSTIC PROCEDURES"

## Our Abpromise to you: Quality guaranteed and expert technical support

- Replacement or refund for products not performing as stated on the datasheet
- Valid for 12 months from date of delivery
- Response to your inquiry within 24 hours
- We provide support in Chinese, English, French, German, Japanese and Spanish
- Extensive multi-media technical resources to help you

- We investigate all quality concerns to ensure our products perform to the highest standards

If the product does not perform as described on this datasheet, we will offer a refund or replacement. For full details of the Abpromise, please visit <https://www.abcam.com/abpromise> or contact our technical team.

### **Terms and conditions**

---

- Guarantee only valid for products bought direct from Abcam or one of our authorized distributors