

## Product datasheet

# Recombinant Human RPS20 protein ab174426

1 Image

### Description

|  |   |  |
|--|---|--|
| <b>Product name</b>                    | Recombinant Human RPS20 protein   |  |
| <b>Purity</b>                          | > 85 % SDS-PAGE.<br>ab174426 is purified by using anion-exchange chromatography (DEAE sepharose resin) and gel-filtration chromatography (Sephacryl S-200) with 20mM Tris pH 7.5, 2mM EDTA.         |  |
| <b>Expression system</b>               | Escherichia coli  |  |
| <b>Accession</b>                       | <b><u>NP_001139699</u></b>  |  |
| <b>Protein length</b>                  | Full length protein   |  |
| <b>Animal free</b>                     | No  |  |
| <b>Nature</b>                          | Recombinant   |  |
| <b>Species</b>                         | Human   |  |
| <b>Sequence</b>                        | MGSSHHHHHH SSGLVPRGSH MGSMAFKDTG<br>KTPVEPEVAI HRIRITLTSR NVKSLEKVCA DLIRGAKEKN<br>LKVKGPVRMP TKTLRITRTRK TPCGEGSKTW<br>DRFQMRIHKR LIDLHSPSEI VKQITSISIE PGVELIESTD<br>AEPMDTEGQQ YTLRSVFESP GTCPPF |  |
| <b>Predicted molecular weight</b>      | 18 kDa including tags   |  |
| <b>Amino acids</b>                     | 1 to 142  |  |
| <b>Tags</b>                            | His tag N-Terminus  |  |
| <b>Additional sequence information</b> | Isoform 2.  |  |

### Specifications

Our **Abpromise guarantee** covers the use of **ab174426** in the following tested applications.

The application notes include recommended starting dilutions; optimal dilutions/concentrations should be determined by the end user.

|                          |                   |
|--------------------------|-------------------|
| <b>Applications</b>      | SDS-PAGE          |
|                          | Mass Spectrometry |
| <b>Mass spectrometry</b> | MALDI-TOF         |
| <b>Form</b>              | Liquid            |

### Preparation and Storage

## Stability and Storage

Shipped at 4°C. Store at +4°C short term (1-2 weeks). Upon delivery aliquot. Store at -20°C or -80°C. Avoid freeze / thaw cycle.

pH: 8.00

Constituents: 0.32% Tris HCl, 1.17% Sodium chloride, 50% Glycerol (glycerin, glycerine), 0.02% DTT, 0.03% EDTA

## General Info

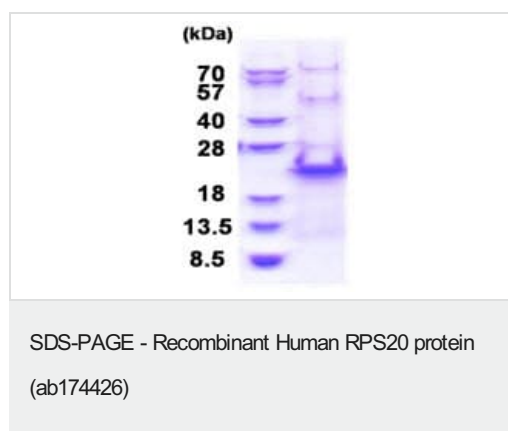
### Sequence similarities

Belongs to the ribosomal protein S10P family.

### Cellular localization

Cytoplasm.

## Images



SDS-PAGE analysis of ab174426 on 15% SDS-PAGE gel (3µg).

**Please note:** All products are "FOR RESEARCH USE ONLY. NOT FOR USE IN DIAGNOSTIC PROCEDURES"

## Our Abpromise to you: Quality guaranteed and expert technical support

- Replacement or refund for products not performing as stated on the datasheet
- Valid for 12 months from date of delivery
- Response to your inquiry within 24 hours
- We provide support in Chinese, English, French, German, Japanese and Spanish
- Extensive multi-media technical resources to help you
- We investigate all quality concerns to ensure our products perform to the highest standards

If the product does not perform as described on this datasheet, we will offer a refund or replacement. For full details of the Abpromise, please visit <https://www.abcam.com/abpromise> or contact our technical team.

## Terms and conditions

- Guarantee only valid for products bought direct from Abcam or one of our authorized distributors