

Product datasheet

Recombinant human RSPO1 protein ab155744

3 Images

Description

Product name	Recombinant human RSPO1 protein
Biological activity	Measured by its binding ability in a functional ELISA. Immobilised Human RSPO1 at 20 µg/ml (100 µl/well) can bind Human LIMP2 with a linear range of 31.25 - 1000 ng/ml.
Purity	> 95 % SDS-PAGE. ab155744 was lyophilised from 0.22 µm filtered solution.
Endotoxin level	< 1.000 Eu/µg
Expression system	HEK 293 cells
Accession	<u>Q2MKA7</u>
Protein length	Full length protein
Animal free	No
Nature	Recombinant
Species	Human
Sequence	SRGIKGKRQR RISAEQSQAC AKGCELCSEV NGCLKCSPKL FILLERNDIR QVGVCLPSCP PGYFDARNPD MNKCIKCKIE HCEACFSHNF CTKCKEGLYL HKGRCYPACP EGSSAANGTM ECSSPAQCEM SEWSPWGPCS KKQQLCGFRR GSEERTRRVL HAPVGDHAAC SSDKETRRCT VRRVPCPEGQ KRRKGGQGRR ENANRNLARK ESKEAGAGSR RRGQQQQQQ QGTVGPLTSA GPA
Predicted molecular weight	28 kDa including tags
Amino acids	21 to 263
Tags	His tag C-Terminus

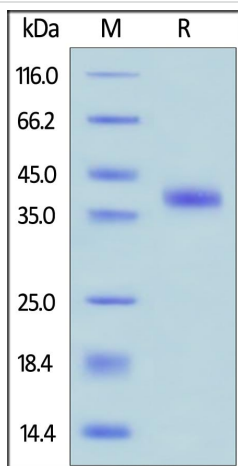
Specifications

Our **Abpromise guarantee** covers the use of **ab155744** in the following tested applications.

The application notes include recommended starting dilutions; optimal dilutions/concentrations should be determined by the end user.

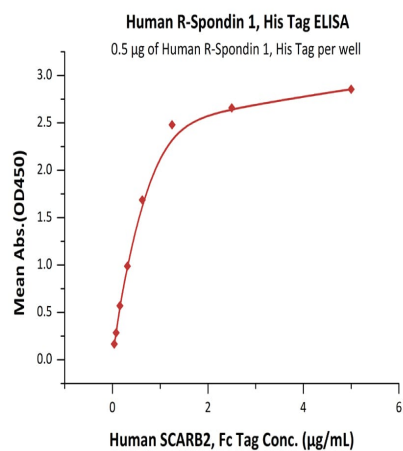
Applications	ELISA
	SDS-PAGE
	Functional Studies

Form	Lyophilized
Additional notes	Measured by its binding ability in a functional ELISA. Immobilised Human RSPO1 at 20 µg/ml (100 µl/well) can bind Human LIMP2 with a linear range of 31.25 - 1000 ng/ml.
Preparation and Storage	
Stability and Storage	<p>Shipped at 4°C. Store at +4°C short term (1-2 weeks). Upon delivery aliquot. Store at -20°C or -80°C. Avoid freeze / thaw cycle.</p> <p>pH: 7.4</p> <p>Constituents: 0.75% Glycine, 0.61% Tris</p> <p>5-10% trehalose is commonly used for freeze drying, and after reconstitution, the trehalose is mostly about 3-5%</p> <p>This product is an active protein and may elicit a biological response in vivo, handle with caution.</p>
Reconstitution	Reconstitute with sterile deionized water to a concentration of 400 µg/ml.
General Info	
Function	Activator of the beta-catenin signaling cascade, leading to TCF-dependent gene activation. Acts both in the canonical Wnt/beta-catenin-dependent pathway, possibly via a direct interaction with Wnt proteins, and in a Wnt-independent beta catenin pathway through a receptor signaling pathway that may not use frizzled/LRP receptors. Acts as a ligand for frizzled FZD8 and LRP6. May negatively regulate the TGF-beta pathway. Has essential roles in ovary determination.
Tissue specificity	Abundantly expressed in adrenal glands, ovary, testis, thyroid and trachea but not in bone marrow, spinal cord, stomach, leukocytes colon, small intestine, prostate, thymus and spleen.
Involvement in disease	Defects in RSPO1 are the cause of palmoplantar keratoderma with squamous cell carcinoma of skin and sex reversal (PKKSCC) [MIM:610644]. This recessive syndrome is characterized by XX (female to male) SRY-independent sex reversal, palmoplantar hyperkeratosis and predisposition to squamous cell carcinoma of the skin.
Sequence similarities	<p>Belongs to the R-spondin family.</p> <p>Contains 2 FU (furin-like) repeats.</p> <p>Contains 1 TSP type-1 domain.</p>
Domain	The FU repeats are required for activation and stabilization of beta-catenin.
Cellular localization	Secreted.
Images	



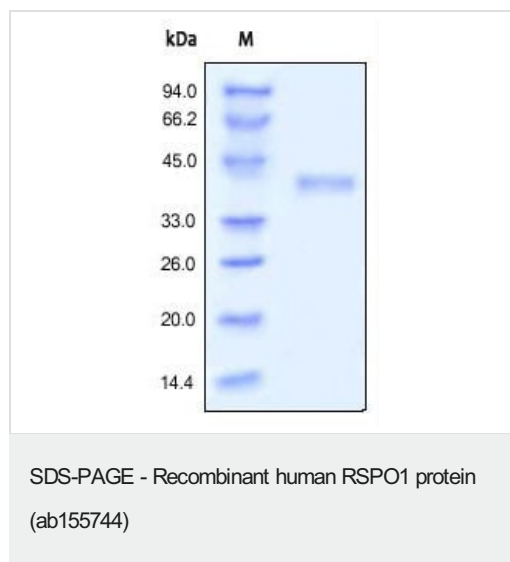
SDS-PAGE - Recombinant human RSPO1 protein
(ab155744)

Human R-Spondin 1, His Tag on SDS-PAGE under reducing (R) condition. The gel was stained overnight with Coomassie Blue. The purity of the protein is greater than 95%.



Functional Studies - Recombinant human RSPO1
protein (ab155744)

Immobilized Human R-Spondin 1, His Tag at 5 µg/mL (100 µL/well) can bind Human SCARB2, Fc Tag with a linear range of 0.02-0.156 µg/mL.



SDS-PAGE analysis of reduced ab155744 stained overnight with Coomassie Blue.

Please note: All products are "FOR RESEARCH USE ONLY. NOT FOR USE IN DIAGNOSTIC PROCEDURES"

Our Abpromise to you: Quality guaranteed and expert technical support

- Replacement or refund for products not performing as stated on the datasheet
- Valid for 12 months from date of delivery
- Response to your inquiry within 24 hours
- We provide support in Chinese, English, French, German, Japanese and Spanish
- Extensive multi-media technical resources to help you
- We investigate all quality concerns to ensure our products perform to the highest standards

If the product does not perform as described on this datasheet, we will offer a refund or replacement. For full details of the Abpromise, please visit <https://www.abcam.com/abpromise> or contact our technical team.

Terms and conditions

- Guarantee only valid for products bought direct from Abcam or one of our authorized distributors