

Product datasheet

Recombinant Human S100 alpha 6/PRA protein ab104645

[1 References](#) [1 Image](#)

Description

Product name	Recombinant Human S100 alpha 6/PRA protein
Purity	> 95 % SDS-PAGE. ab104645 is purified by using anion-exchange chromatography (DEAE sepharose resin) and gel-filtration chromatography (Sephacryl S-200) with 20mM Tris pH 7.5, 2mM EDTA.
Expression system	Escherichia coli
Accession	<u>P06703</u>
Protein length	Full length protein
Animal free	No
Nature	Recombinant
Species	Human
Sequence	MGSSHHHHHHSSGLVPRGSHMACPLDQAIGLLVAIFHKY SGREGDKHTLS KKELKELIQKELTIGSKLQDAEIARLMEDLDRNKDQEVNFQ EYVTFLGAL ALYNEALKG
Predicted molecular weight	12 kDa including tags
Amino acids	1 to 90
Tags	His tag N-Terminus

Specifications

Our **Abpromise guarantee** covers the use of **ab104645** in the following tested applications.

The application notes include recommended starting dilutions; optimal dilutions/concentrations should be determined by the end user.

Applications	SDS-PAGE Mass Spectrometry
Mass spectrometry	MALDI-TOF
Form	Liquid
Additional notes	This product was previously labelled as S100 alpha 6

Preparation and Storage

Stability and Storage

Shipped at 4°C. Store at +4°C short term (1-2 weeks). Upon delivery aliquot. Store at -20°C or -80°C. Avoid freeze / thaw cycle.

pH: 8.00

Constituents: 0.0154% DTT, 0.316% Tris HCl, 30% Glycerol (glycerin, glycerine), 0.58% Sodium chloride

General Info

Function

May function as calcium sensor and modulator, contributing to cellular calcium signaling. May function by interacting with other proteins, such as TPR-containing proteins, and indirectly play a role in many physiological processes such as the reorganization of the actin cytoskeleton and in cell motility. Binds 2 calcium ions. Calcium binding is cooperative.

Sequence similarities

Belongs to the S-100 family.
Contains 2 EF-hand domains.

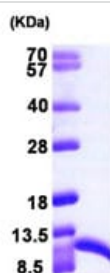
Post-translational modifications

The N-terminus is blocked.

Cellular localization

Nucleus envelope. Cytoplasm. Cell membrane.

Images



15% SDS-PAGE showing ab104645 at approximately 12.3kDa (3µg).

SDS-PAGE - Recombinant Human S100 alpha
6/PRA protein (ab104645)

Please note: All products are "FOR RESEARCH USE ONLY. NOT FOR USE IN DIAGNOSTIC PROCEDURES"

Our Abpromise to you: Quality guaranteed and expert technical support

- Replacement or refund for products not performing as stated on the datasheet
- Valid for 12 months from date of delivery
- Response to your inquiry within 24 hours
- We provide support in Chinese, English, French, German, Japanese and Spanish
- Extensive multi-media technical resources to help you
- We investigate all quality concerns to ensure our products perform to the highest standards

If the product does not perform as described on this datasheet, we will offer a refund or replacement. For full details of the Abpromise, please visit <https://www.abcam.com/abpromise> or contact our technical team.

Terms and conditions

- Guarantee only valid for products bought direct from Abcam or one of our authorized distributors