

Product datasheet

Recombinant Human S100 alpha 6/PRA protein ab167733

[1 Image](#)

Description

Product name	Recombinant Human S100 alpha 6/PRA protein	
Purity	> 95 % SDS-PAGE. ab167733 was lyophilized from 0.22 µm filtered solution.	
Endotoxin level	< 0.100 Eu/µg	
Expression system	Escherichia coli	
Accession	<u>P06703</u>	
Protein length	Full length protein	
Animal free	No	
Nature	Recombinant	
Species	Human	
Sequence	MACPLDQAIGLLVAIFHKYSGREGDKHTLSKKELKELIQKE LTIGSKLQD AEIARLMEDLDRNKDQEVNMQEYVTFGLGALALIYNEALKG	
Predicted molecular weight	10 kDa	
Amino acids	1 to 90	

Specifications

Our **Abpromise guarantee** covers the use of **ab167733** in the following tested applications.

The application notes include recommended starting dilutions; optimal dilutions/concentrations should be determined by the end user.

Applications	SDS-PAGE
Form	Lyophilized
Additional notes	This product was previously labelled as S100 alpha 6. This product is stable after storage at: -20 °C to -70 °C for 12 months in lyophilized state; -70 °C for 3 months under sterile conditions after reconstitution.

Preparation and Storage

Stability and Storage

Shipped at 4°C. Upon delivery aliquot. Store at -20°C or -80°C. Avoid freeze / thaw cycle. Please see notes section.

pH: 7.40

Constituents: 94% PBS, 5% Trehalose

Reconstitution

It is recommended to reconstitute the lyophilized protein in sterile deionized water to a final concentration of 300 ug/ml. Solubilize for 30 to 60 minutes at room temperature with occasional gentle mixing. Carrier protein (0.1% HSA or BSA) is strongly recommended for further dilution and long term storage.

General Info**Function**

May function as calcium sensor and modulator, contributing to cellular calcium signaling. May function by interacting with other proteins, such as TPR-containing proteins, and indirectly play a role in many physiological processes such as the reorganization of the actin cytoskeleton and in cell motility. Binds 2 calcium ions. Calcium binding is cooperative.

Sequence similarities

Belongs to the S-100 family.

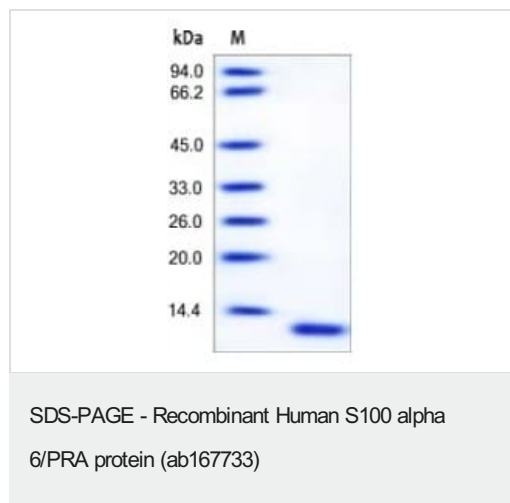
Contains 2 EF-hand domains.

Post-translational modifications

The N-terminus is blocked.

Cellular localization

Nucleus envelope. Cytoplasm. Cell membrane.

Images

SDS-PAGE analysis of reduced ab167733 staining overnight with Coomassie Blue.

Please note: All products are "FOR RESEARCH USE ONLY. NOT FOR USE IN DIAGNOSTIC PROCEDURES"

Our Abpromise to you: Quality guaranteed and expert technical support

- Replacement or refund for products not performing as stated on the datasheet
- Valid for 12 months from date of delivery
- Response to your inquiry within 24 hours

- We provide support in Chinese, English, French, German, Japanese and Spanish
- Extensive multi-media technical resources to help you
- We investigate all quality concerns to ensure our products perform to the highest standards

If the product does not perform as described on this datasheet, we will offer a refund or replacement. For full details of the Abpromise, please visit <https://www.abcam.com/abpromise> or contact our technical team.

Terms and conditions

- Guarantee only valid for products bought direct from Abcam or one of our authorized distributors