

## Product datasheet

### Recombinant Human S100 alpha protein ab206460

[1 Image](#)

#### Description

<b>Product name</b>	Recombinant Human S100 alpha protein
<b>Purity</b>	> 95 % Densitometry.
<b>Endotoxin level</b>	< 1.000 Eu/μg
<b>Expression system</b>	Escherichia coli
<b>Accession</b>	<b><u>P23297</u></b>
<b>Protein length</b>	Full length protein
<b>Animal free</b>	No
<b>Nature</b>	Recombinant
<b>Species</b>	Human
<b>Sequence</b>	MKHHHHHHASGSELETAMETLINVFHAHSGKEGDKYKLS KKELKELLQTE LSGFLDAQKDVDKVMKELDENGDFQYVVLV AALTACNNFFW ENS
<b>Predicted molecular weight</b>	12 kDa including tags
<b>Amino acids</b>	2 to 94
<b>Tags</b>	His tag N-Terminus

#### Specifications

Our **Abpromise guarantee** covers the use of **ab206460** in the following tested applications.

The application notes include recommended starting dilutions; optimal dilutions/concentrations should be determined by the end user.

<b>Applications</b>	SDS-PAGE
<b>Form</b>	Lyophilized

#### Preparation and Storage

<b>Stability and Storage</b>	Shipped at 4°C. Upon delivery aliquot. Store at -80°C. Avoid freeze / thaw cycle. Constituents: 0.29% Sodium chloride, 0.24% Tris  Lyophilized from a 0.4 μm filtered solution.
------------------------------	--

## Reconstitution

Add deionized water to prepare a working stock solution of approximately 0.5 mg/ml and let the lyophilized pellet dissolve completely.

## General Info

### Function

Weakly binds calcium but binds zinc very tightly-distinct binding sites with different affinities exist for both ions on each monomer. Physiological concentrations of potassium ion antagonize the binding of both divalent cations, especially affecting high-affinity calcium-binding sites.

### Tissue specificity

Highly prevalent in heart. Also found in lesser quantities in skeletal muscle and brain.

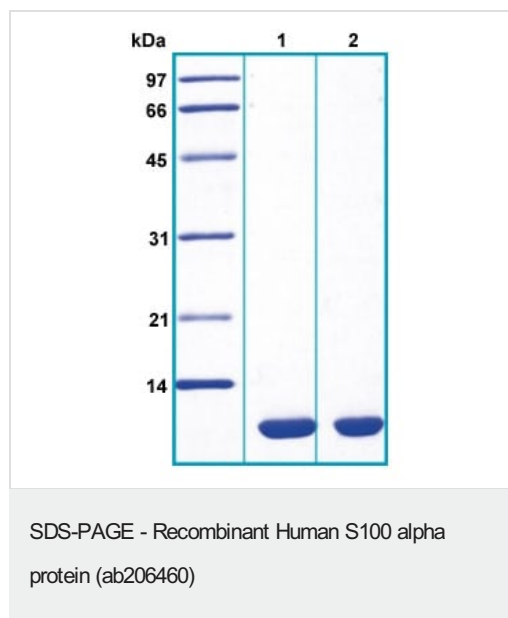
### Sequence similarities

Belongs to the S-100 family.  
Contains 2 EF-hand domains.

### Cellular localization

Cytoplasm.

## Images



14% SDS-PAGE analysis of ab206460.

Lane 1: Reduced and heated sample, 5µg / lane

Lane 2: Non-reduced and non-heated sample, 5µg / lane

**Please note:** All products are "FOR RESEARCH USE ONLY. NOT FOR USE IN DIAGNOSTIC PROCEDURES"

## Our Abpromise to you: Quality guaranteed and expert technical support

- Replacement or refund for products not performing as stated on the datasheet
- Valid for 12 months from date of delivery
- Response to your inquiry within 24 hours
- We provide support in Chinese, English, French, German, Japanese and Spanish
- Extensive multi-media technical resources to help you
- We investigate all quality concerns to ensure our products perform to the highest standards

If the product does not perform as described on this datasheet, we will offer a refund or replacement. For full details of the Abpromise, please visit <https://www.abcam.com/abpromise> or contact our technical team.

## Terms and conditions

---

- Guarantee only valid for products bought direct from Abcam or one of our authorized distributors