

## Product datasheet

# Recombinant Human S100 Calcium Binding Protein A13/S100A13 ab105573

[1 Image](#)

### Description

<b>Product name</b>	Recombinant Human S100 Calcium Binding Protein A13/S100A13
<b>Purity</b>	> 95 % SDS-PAGE. ab105573 was purified using conventional chromatography.
<b>Expression system</b>	Escherichia coli
<b>Accession</b>	<u><a href="#">Q99584</a></u>
<b>Protein length</b>	Full length protein
<b>Animal free</b>	No
<b>Nature</b>	Recombinant
<b>Species</b>	Human
<b>Sequence</b>	<b>MGSSHHHHHHSSGLVPRGSH</b> MAAEPLTELEESietvvtT FFTFARQEGRK DSLsvNEfKELVTQQLPHLLKDVGSldEKMKSLdVNQDS ELKFNEYWRLIGELAKEIRKKKDLKIRKK
<b>Predicted molecular weight</b>	14 kDa including tags
<b>Amino acids</b>	1 to 98
<b>Tags</b>	His tag N-Terminus

### Specifications

Our **Abpromise guarantee** covers the use of **ab105573** in the following tested applications.

The application notes include recommended starting dilutions; optimal dilutions/concentrations should be determined by the end user.

<b>Applications</b>	SDS-PAGE Mass Spectrometry
<b>Mass spectrometry</b>	MALDI-TOF
<b>Form</b>	Liquid
<b>Additional notes</b>	This product was previously labelled as S100 Calcium Binding Protein A13

### Preparation and Storage

## Preparation and Storage

### Stability and Storage

Shipped at 4°C. Store at +4°C short term (1-2 weeks). Upon delivery aliquot. Store at -20°C or -80°C. Avoid freeze / thaw cycle.

pH: 8.00

Constituents: 0.316% Tris HCl, 20% Glycerol (glycerin, glycerine), 0.29% Sodium chloride

## General Info

### Function

Plays a role in the export of proteins that lack a signal peptide and are secreted by an alternative pathway. Binds two calcium ions per subunit. Binds one copper ion. Binding of one copper ion does not interfere with calcium binding. Required for the copper-dependent stress-induced export of IL1A and FGF1. The calcium-free protein binds to lipid vesicles containing phosphatidylserine, but not to vesicles containing phosphatidylcholine.

### Tissue specificity

Expressed in heart and skeletal muscle.

### Sequence similarities

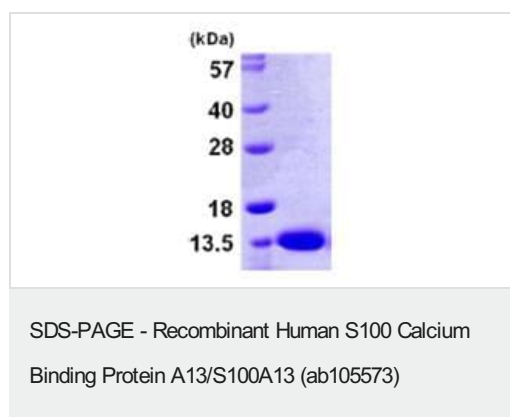
Belongs to the S-100 family.

Contains 2 EF-hand domains.

### Cellular localization

Cytoplasm. Secreted. Secretion is mediated by exposure to stress and requires copper ions.

## Images



15% SDS-PAGE analysis of ab105573 (3ug)

**Please note:** All products are "FOR RESEARCH USE ONLY. NOT FOR USE IN DIAGNOSTIC PROCEDURES"

## Our Abpromise to you: Quality guaranteed and expert technical support

- Replacement or refund for products not performing as stated on the datasheet
- Valid for 12 months from date of delivery
- Response to your inquiry within 24 hours
- We provide support in Chinese, English, French, German, Japanese and Spanish
- Extensive multi-media technical resources to help you
- We investigate all quality concerns to ensure our products perform to the highest standards

If the product does not perform as described on this datasheet, we will offer a refund or replacement. For full details of the Abpromise, please visit <https://www.abcam.com/abpromise> or contact our technical team.

## Terms and conditions

---

- Guarantee only valid for products bought direct from Abcam or one of our authorized distributors