

Product datasheet

Recombinant Human SAE1 protein ab140413

[1 Image](#)

Description

Product name	Recombinant Human SAE1 protein	
Purity	> 95 % Densitometry. Affinity purified.	
Expression system	Baculovirus infected Sf9 cells	
Accession	<u>Q9UBE0</u>	
Protein length	Full length protein	
Animal free	No	
Nature	Recombinant	
Species	Human	
Sequence	MVEKEEAGGGISEEEAAQYDRQIRLWGLEAQKRLRASRV LLVGLKGLGAE IAKNLILAGVKGLTMLDHEQVTPEDPGAQFLIRTGSVGRNR AEASLERAQ NLNPMVDVKVDTEIEKKPESFFTQFDVCLTCCSRDVIV KVDQICHKNS IKFFTGDVFGYHGYTFANLGEHEFVEEKTAKVKSQGVED GPDTKRAKLD SSETTMVKKKVVFCPVKEALEVDWSSEKAKAALKRTTSD YLLQVLLKFR TDKGRDPSSDYEEDSELLLQIRNDVLDLGLISPDLLPEDF VRYCFSEMA PVCAVVGILAQEIVKALSQRDPPHNNFFFFDGMKGNIV ECLGPK	
Predicted molecular weight	65 kDa including tags	
Amino acids	1 to 346	

Specifications

Our **Abpromise guarantee** covers the use of **ab140413** in the following tested applications.

The application notes include recommended starting dilutions; optimal dilutions/concentrations should be determined by the end user.

Applications	Western blot
	SDS-PAGE

Form Liquid

Preparation and Storage

Stability and Storage

Shipped on dry ice. Upon delivery aliquot and store at -80°C. Avoid freeze / thaw cycles.

pH: 7.50

Constituents: 0.31% Glutathione, 0.002% PMSF, 0.004% DTT, 0.79% Tris HCl, 0.003% EDTA, 25% Glycerol (glycerin, glycerine), 0.88% Sodium chloride

General Info

Function

The heterodimer acts as a E1 ligase for SUMO1, SUMO2, SUMO3, and probably SUMO4. It mediates ATP-dependent activation of SUMO proteins followed by formation of a thioester bond between a SUMO protein and a conserved active site cysteine residue on UBA2/SAE2.

Tissue specificity

Expression level increases during S phase and drops in G2 phase (at protein level).

Pathway

Protein modification; protein sumoylation.

Sequence similarities

Belongs to the ubiquitin-activating E1 family.

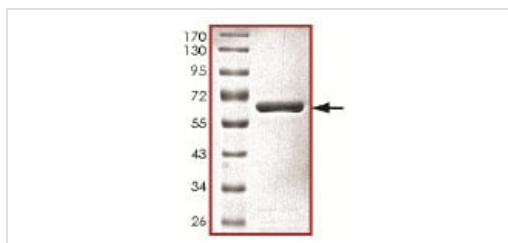
Post-translational modifications

Phosphorylated upon DNA damage, probably by ATM or ATR.

Cellular localization

Nucleus.

Images



SDS-PAGE analysis of ab140413.

SDS-PAGE - Recombinant Human SAE1 protein
(ab140413)

Please note: All products are "FOR RESEARCH USE ONLY. NOT FOR USE IN DIAGNOSTIC PROCEDURES"

Our Abpromise to you: Quality guaranteed and expert technical support

- Replacement or refund for products not performing as stated on the datasheet
- Valid for 12 months from date of delivery
- Response to your inquiry within 24 hours
- We provide support in Chinese, English, French, German, Japanese and Spanish
- Extensive multi-media technical resources to help you

- We investigate all quality concerns to ensure our products perform to the highest standards

If the product does not perform as described on this datasheet, we will offer a refund or replacement. For full details of the Abpromise, please visit <https://www.abcam.com/abpromise> or contact our technical team.

Terms and conditions

- Guarantee only valid for products bought direct from Abcam or one of our authorized distributors