

Recombinant Human SATB2 protein ab132405

1 Image

Description	
Product name	Recombinant Human SATB2 protein
Expression system	Wheat germ
Accession	<u>Q9UPW6</u>
Protein length	Full length protein
Animal free	No
Nature	Recombinant
Species	Human
Sequence	MERRSESPCLRDSPDRRSGSPDVKGPPPVKVARLEQNG SPMGARGRPNGA VAKAVGGLMIPVFCVVEQLDGSLEYDNREEHAEFVLVRK DVLFSQLVETA LLALGYSHSSAAQAQGIKLGRWNPLPLSYVTDAPDATVA DMLQDVYHVV TLKIQLQSCSKLEDLPAEQWNHATVRNALKELLKEMNQST LAKECPLSQS MISSIVNSTYYANVSATKCQEFGRWYKKYKKIKVERVEREN LSDYCVLGQ RPMHLPNMNQLASLGKTNEQSPHSQIHSTPIRNQVPALQ PIMSPGLLSP QLSPQLVRQQIAMAHLINQQIAVSRLLAHQHPQAINQQFLN HPPIPRAVK PEPTNSSVEVSPDIYQQVRDELKRASVSQAVFARVAFNR TQGLLSEILRK EEDPRTASQSLLVNLRAMQNFLNLPEVERDRIYQDERERS MNPNVSMVSS ASSSPSSSRTPQAKTSTPTDLPKVDGANINITAAMYDEIQQ EMKRAKV SQALFAKVAANKSQGWLCELLRWKENPSPENRTLWENL CTIRRFLNLPQH ERDVIYEEESRHHHSERMQHVVQLPPEPVQVLHRQQSQP AKESSPPREEA PPPPPTEDSCAKKPRSRTKISLEALGILQSFIHDVGLYPD QEAIHTLSA QLDLPKHITIIFQNRQYHVKHHGKLKEHLGSAVDVAEYK DEELLTESEE

Predicted molecular weight	109 kDa including tags
Amino acids	1 to 733

Specifications

Our **Abpromise guarantee** covers the use of **ab132405** in the following tested applications.

The application notes include recommended starting dilutions; optimal dilutions/concentrations should be determined by the end user.

Applications	SDS-PAGE
	Western blot
	ELISA
Form	Liquid

Preparation and Storage

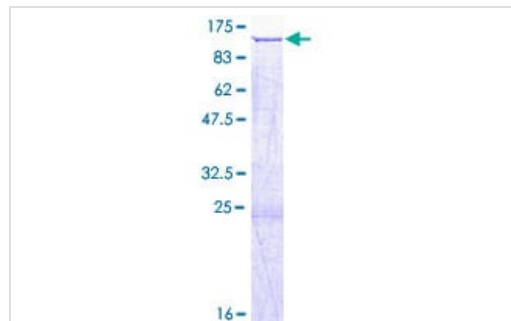
Stability and Storage	Shipped on dry ice. Upon delivery aliquot and store at -80°C. Avoid freeze / thaw cycles. pH: 8.00 Constituents: 0.31% Glutathione, 0.79% Tris HCl
------------------------------	--

General Info

Function	Binds to DNA, at nuclear matrix- or scaffold-associated regions. Thought to recognize the sugar-phosphate structure of double-stranded DNA. Transcription factor controlling nuclear gene expression, by binding to matrix attachment regions (MARs) of DNA and inducing a local chromatin-loop remodeling. Acts as a docking site for several chromatin remodeling enzymes and also by recruiting corepressors (HDACs) or coactivators (HATs) directly to promoters and enhancers. Required for the initiation of the upper-layer neurons (UL1) specific genetic program and for the inactivation of deep-layer neurons (DL) and UL2 specific genes, probably by modulating BCL11B expression. Repressor of Ctip2 and regulatory determinant of corticocortical connections in the developing cerebral cortex. May play an important role in palate formation. Acts as a molecular node in a transcriptional network regulating skeletal development and osteoblast differentiation.
Tissue specificity	High expression in adult brain, moderate expression in fetal brain, and weak expression in adult liver, kidney, and spinal cord and in select brain regions, including amygdala, corpus callosum, caudate nucleus, and hippocampus.
Involvement in disease	Note=Chromosomal aberrations involving SATB2 are found in isolated cleft palate. Translocation t(2;7); translocation t(2;11). Defects in SATB2 are a cause of cleft palate isolated (CPI) [MIM:119540]. A congenital fissure of the soft and/or hard palate, due to faulty fusion. Isolated cleft palate is not associated with cleft lips. Some patients may manifest other craniofacial dysmorphic features, mental retardation, and osteoporosis. Note=A chromosomal aberration involving SATB2 is found in a patient with classical features of Toriello-Carey syndrome. Translocation t(2;14)(q33;q22).
Sequence similarities	Belongs to the CUT homeobox family. Contains 2 CUT DNA-binding domains. Contains 1 homeobox DNA-binding domain.

Post-translational modifications	Sumoylated by PIAS1. Sumoylation promotes nuclear localization, but represses transcription factor activity.
Cellular localization	Nucleus matrix.

Images



12.5% SDS-PAGE analysis of ab132405 stained with Coomassie Blue.

SDS-PAGE - Recombinant Human SATB2 protein
(ab132405)

Please note: All products are "FOR RESEARCH USE ONLY. NOT FOR USE IN DIAGNOSTIC PROCEDURES"

Our Abpromise to you: Quality guaranteed and expert technical support

- Replacement or refund for products not performing as stated on the datasheet
- Valid for 12 months from date of delivery
- Response to your inquiry within 24 hours
- We provide support in Chinese, English, French, German, Japanese and Spanish
- Extensive multi-media technical resources to help you
- We investigate all quality concerns to ensure our products perform to the highest standards

If the product does not perform as described on this datasheet, we will offer a refund or replacement. For full details of the Abpromise, please visit <https://www.abcam.com/abpromise> or contact our technical team.

Terms and conditions

- Guarantee only valid for products bought direct from Abcam or one of our authorized distributors