

Recombinant human SBK1 protein ab204137

5 Images

Description	
Product name	Recombinant human SBK1 protein
Biological activity	The specific activity of ab204137 was determined to be 20 nmol /min/mg.
Purity	> 90 % Densitometry. Affinity purified.
Expression system	Baculovirus infected Sf9 cells
Accession	<u>Q52WX2</u>
Protein length	Full length protein
Animal free	No
Nature	Recombinant
Species	Human
Sequence	MSVGCPEPEPPRSLTCCGPGTAPGPGAGVPLLTEDMQA LTLRTLAASDVT KHYELVRELGKGTYGKVDLVVYKGTGTMALKFVNKSKTK LKNFLREVSI TNSLSSSPFIKVFDDVFETEDCYVFAQEYAPAGDLFDIIPP QVGLPEDT VKRCVQQGLALDFMHGRQLVHRDIKPENVLLFDRECRR VKLADFGMTRR VGCRVKRVSGTIPYTAPEVCQAGRADGLAVDTGVDVWAF GVLIFCVLTGN FPWEAASGADAFEEFVRWQRGRLPGLPSQWRRFTEPA LRMFQRLLALEP ERRGPAKEVFRFLKHELTSELRRRPSHRARKPPGDRPPA AGPLRLEAPGP LKRTVLTESGSGSRPAPPVAVGSVPLPVPVPVPVPVPVPV PEPGLAPQGGP GRTDGRADKSKGQVVLATAIEICV
Predicted molecular weight	69 kDa including tags
Amino acids	1 to 424
Tags	GST tag N-Terminus

Specifications

Our **Abpromise guarantee** covers the use of **ab204137** in the following tested applications.

The application notes include recommended starting dilutions; optimal dilutions/concentrations should be determined by the end user.

Applications	SDS-PAGE
	Functional Studies
Form	Liquid
Additional notes	ab204874 (PKI-alpha peptide) can be utilized as a substrate for assessing kinase activity

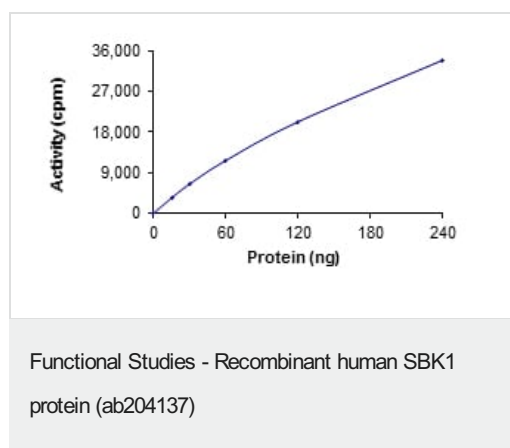
Preparation and Storage

Stability and Storage	Shipped on Dry Ice. Upon delivery aliquot. Store at -80°C. Avoid freeze / thaw cycle.
	pH: 7.50
	Constituents: 0.79% Tris HCl, 0.87% Sodium chloride, 0.31% Glutathione, 0.003% EDTA, 0.004% DTT, 0.002% PMSF, 25% Glycerol (glycerin, glycerine)
	This product is an active protein and may elicit a biological response in vivo, handle with caution.

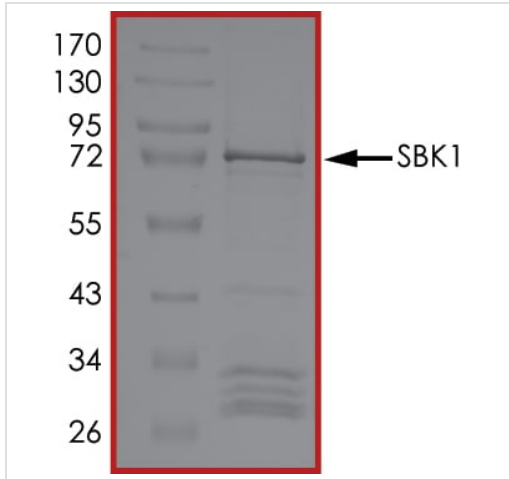
General Info

Function	May be involved in signal-transduction pathways related to the control of brain development.
Sequence similarities	Belongs to the protein kinase superfamily. Ser/Thr protein kinase family. Contains 1 protein kinase domain.
Cellular localization	Cytoplasm.

Images

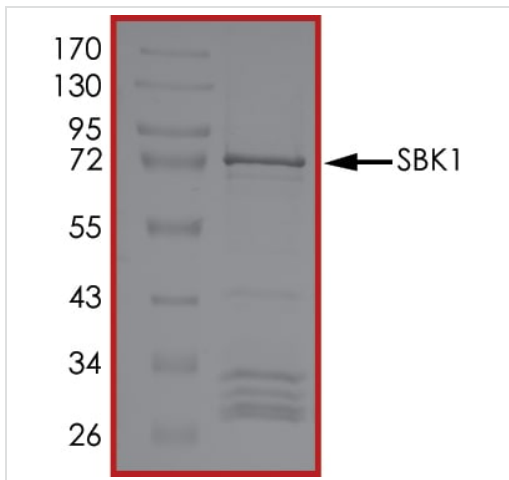


The specific activity of SBK1 (ab204137) was determined to be 17 nmol/min/mg as per activity assay protocol



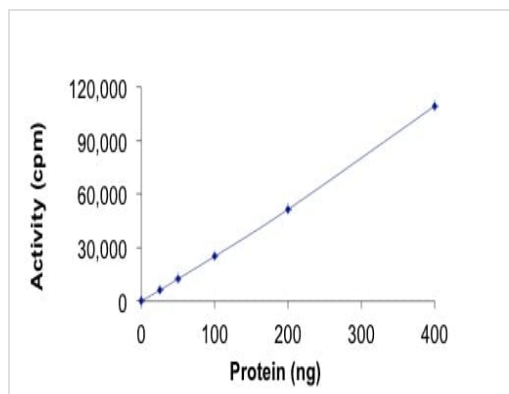
SDS-PAGE - Recombinant human SBK1 protein
(ab204137)

SDS PAGE analysis of ab204137



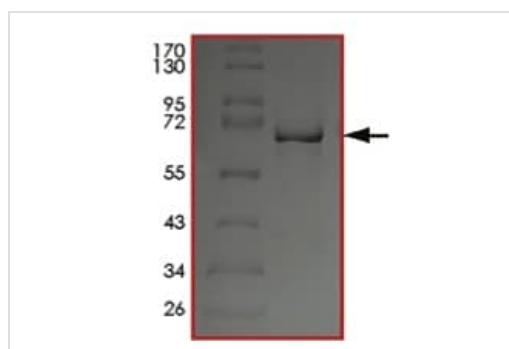
SDS-PAGE - Recombinant human SBK1 protein
(ab204137)

SDS PAGE analysis of ab204137



Sample Kinase Activity Plot showing ab204137. The specific activity of SBK1 was determined to be 20 nmol /min/mg.

Functional Studies - Recombinant human SBK1 protein (ab204137)



SDS-PAGE showing ab204137.

SDS-PAGE - Recombinant human SBK1 protein (ab204137)

Please note: All products are "FOR RESEARCH USE ONLY. NOT FOR USE IN DIAGNOSTIC PROCEDURES"

Our Abpromise to you: Quality guaranteed and expert technical support

- Replacement or refund for products not performing as stated on the datasheet
- Valid for 12 months from date of delivery
- Response to your inquiry within 24 hours
- We provide support in Chinese, English, French, German, Japanese and Spanish
- Extensive multi-media technical resources to help you
- We investigate all quality concerns to ensure our products perform to the highest standards

If the product does not perform as described on this datasheet, we will offer a refund or replacement. For full details of the Abpromise,

please visit <https://www.abcam.com/abpromise> or contact our technical team.

Terms and conditions

- Guarantee only valid for products bought direct from Abcam or one of our authorized distributors