

### Recombinant Human SCY1 like 3 protein ab167935

1 Image

#### Description

<b>Product name</b>	Recombinant Human SCY1 like 3 protein
<b>Purity</b>	> 85 % Densitometry. Affinity purified.
<b>Expression system</b>	Baculovirus infected Sf9 cells
<b>Accession</b>	<u><b>Q8IZE3-2</b></u>
<b>Protein length</b>	Full length protein
<b>Animal free</b>	No
<b>Nature</b>	Recombinant
<b>Species</b>	Human
<b>Sequence</b>	<p>GSENSALKSYTLREPPFTLPSGLAVYPAVLQDGKFASV            YKRENEDKVN            KAAKHLKTLRHPCLLRFLSCTVEADGHLVTERVQPLEVAL            ETLSSAEVC            AGYDILLALIFLHDRGHLTHNNVCLSSVFVSEDGHWKLG            METVCKVSQ            ATPEFLRSIQSIRDPAIPPEEMSPEFTTLPECHGHARDAF            SFGTLVESL            LTLNEQVSADVLSSFQQLHSTLLNPIPCKRPACTLLSH            DFFRNDFLE            VVNFLKSLTLKSEEEKTEFFKFLDRVSLSEELIASRLVP            LLLNQLVFA            EPVAVKSFLPYLLGPKKDHAQGETPCLLSPALFQSRVIPV            LLQLFEVHEE            HVRMVLLSHIEAYVEHFTQEQLKKVILPVLLGLRDTSDSIV            AITLHSLA            VLVSLLGPEVVVGGERTKIFKRTAPSFTKNTDLSLEGDPF            SQPIKFPING            LSDVKNTSEDFENFPSSSKKSEEWPDWSEPEEPENQTV            NIQWPREPCDD            VKSQCTTLVVEESSWDDCEPSSLDTKVNPGGGITATKPV            TSAEQKPIPAL            LSLTEESMPWKSSLPQKISLVQRGDDADQIEPPKVSSQE            RPLKVPSELGL            GEEFTIQVKKKPKVDPEMDWFADMIPEIKPSAAFLILPELR</p>

TEMVPPKDD  
VSPVMQFSSKFAAAEITEGEAEGWEEEGELNWNW

<b>Predicted molecular weight</b>	110 kDa including tags
<b>Amino acids</b>	2 to 688
<b>Tags</b>	proprietary tag N-Terminus

## Specifications

---

Our **Abpromise guarantee** covers the use of **ab167935** in the following tested applications.

The application notes include recommended starting dilutions; optimal dilutions/concentrations should be determined by the end user.

<b>Applications</b>	SDS-PAGE Western blot
<b>Form</b>	Liquid

## Preparation and Storage

---

<b>Stability and Storage</b>	Shipped on dry ice. Upon delivery aliquot and store at -80°C. Avoid freeze / thaw cycles. pH: 7.50 Constituents: 0.31% Glutathione, 0.002% PMSF, 0.004% DTT, 0.79% Tris HCl, 0.003% EDTA, 25% Glycerol (glycerin, glycerine), 0.29% Sodium chloride
------------------------------	---

## General Info

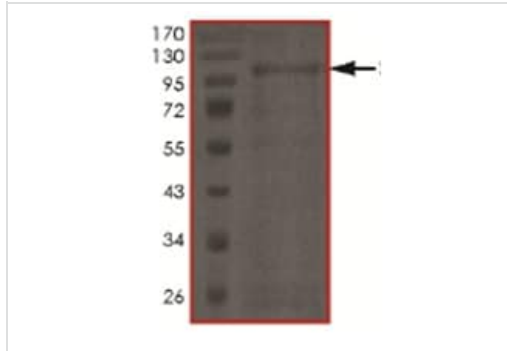
---

<b>Function</b>	May play a role in regulating cell adhesion/migration complexes in migrating cells.
<b>Tissue specificity</b>	Ubiquitously expressed.
<b>Sequence similarities</b>	Belongs to the protein kinase superfamily. Contains 4 HEAT repeats. Contains 1 protein kinase domain.
<b>Domain</b>	The protein kinase domain is predicted to be catalytically inactive.
<b>Post-translational modifications</b>	May be myristoylated; myristoylation may target it to Golgi compartment. Phosphorylated.
<b>Cellular localization</b>	Cytoplasm. Golgi apparatus. Cell projection > lamellipodium. Colocalized with EZR/VIL2, actin and CD44 in lamellipodia.

---

## Images

---



SDS-PAGE analysis of ab167935.

SDS-PAGE - Recombinant Human SCY1 like 3 protein (ab167935)

**Please note:** All products are "FOR RESEARCH USE ONLY. NOT FOR USE IN DIAGNOSTIC PROCEDURES"

### Our Abpromise to you: Quality guaranteed and expert technical support

---

- Replacement or refund for products not performing as stated on the datasheet
- Valid for 12 months from date of delivery
- Response to your inquiry within 24 hours
- We provide support in Chinese, English, French, German, Japanese and Spanish
- Extensive multi-media technical resources to help you
- We investigate all quality concerns to ensure our products perform to the highest standards

If the product does not perform as described on this datasheet, we will offer a refund or replacement. For full details of the Abpromise, please visit <https://www.abcam.com/abpromise> or contact our technical team.

### Terms and conditions

---

- Guarantee only valid for products bought direct from Abcam or one of our authorized distributors