

Product datasheet

Recombinant Human SDCCAG8 protein ab132722

1 Image

Description

Product name	Recombinant Human SDCCAG8 protein
Expression system	Wheat germ
Accession	<u>Q86SQ7-2</u>
Protein length	Full length protein
Animal free	No
Nature	Recombinant
Species	Human
Sequence	MAKSPENSTLEEILGQYQRSLEHASRSIHQLTCALKEGD VTIGEDAPNL SFSTSVGNEDARTAWPELQQSHAVNQLKDLLRQQADKE SEVSPSRRRKMS PLRSLEHEETNMPTMHDLVHTINDQSQYIHHLEAEVKFCK EELSGMKNKI QVVVLENEGLQQQLKSQRQEETLREQTLLDASGNMHNS WITTGEDSGVGE TSKRPFSDNADFGKAASAGEQLELEKCLKLYEEKCEIEE SQLKFLRNDL AEYQRTCEDLKEQLKHKEFLAANTCNRVGGGLCLKCAQH EAVLSQHTNV HMQTIERLVKERDDLMSALVSVRSSLADTQQREASAYEQ VKQVLQISEEA NFEKTKHPSQ
Predicted molecular weight	67 kDa including tags
Amino acids	1 to 360

Specifications

Our **Abpromise guarantee** covers the use of **ab132722** in the following tested applications.

The application notes include recommended starting dilutions; optimal dilutions/concentrations should be determined by the end user.

Applications	SDS-PAGE ELISA Western blot
Form	Liquid

Preparation and Storage

Stability and Storage

Shipped on dry ice. Upon delivery aliquot and store at -80°C. Avoid freeze / thaw cycles.

pH: 8.00

Constituents: 0.31% Glutathione, 0.79% Tris HCl

General Info

Function

Plays a role in the establishment of cell polarity and epithelial lumen formation (By similarity). May play a role in ciliogenesis.

Tissue specificity

Expressed in thymus, prostate, testis, ovary, small intestine, colon, mucosa, colon and renal cancer tumors.

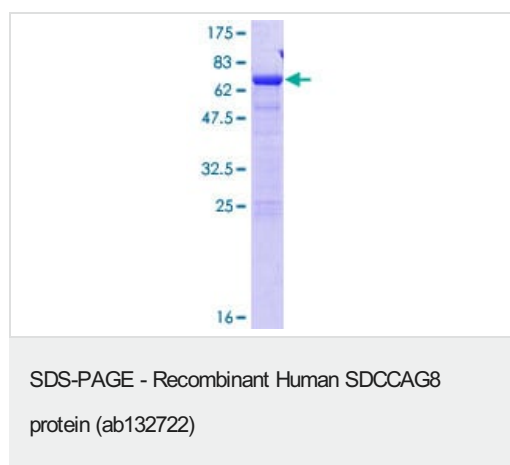
Involvement in disease

Senior-Loken syndrome 7 (SLSN7) [MIM:613615]: A renal-retinal disorder characterized by progressive wasting of the filtering unit of the kidney (nephronophthisis), with or without medullary cystic renal disease, and progressive eye disease. Typically this disorder becomes apparent during the first year of life. Note=The disease is caused by mutations affecting the gene represented in this entry.

Cellular localization

Cytoplasm and Cytoplasm > cytoskeleton > centrosome > centriole. Cell junction. Located at the distal ends of both centrioles and colocalizes to centrosomes throughout the cell cycle.

Images



12.5% SDS-PAGE analysis of ab132722 stained with Coomassie Blue.

Please note: All products are "FOR RESEARCH USE ONLY. NOT FOR USE IN DIAGNOSTIC PROCEDURES"

Our Promise to you: Quality guaranteed and expert technical support

- Replacement or refund for products not performing as stated on the datasheet
- Valid for 12 months from date of delivery
- Response to your inquiry within 24 hours
- We provide support in Chinese, English, French, German, Japanese and Spanish
- Extensive multi-media technical resources to help you

- We investigate all quality concerns to ensure our products perform to the highest standards

If the product does not perform as described on this datasheet, we will offer a refund or replacement. For full details of the Abpromise, please visit <https://www.abcam.com/abpromise> or contact our technical team.

Terms and conditions

- Guarantee only valid for products bought direct from Abcam or one of our authorized distributors