

Product datasheet

Recombinant Human SEMA3G protein ab163429

1 Image

Description

Product name	Recombinant Human SEMA3G protein
Expression system	Wheat germ
Protein length	Full length protein
Animal free	No
Nature	Recombinant
Species	Human

Sequence

MAPSAWAICWLLGLLLLHGGSSGSPGSPVPRRLRSYRD
LLSANRSAIFL
GPQGSLNLQAMYLDEYRDRLFGLDALYSLRLDQAWPD
PREVLWPPQPG
QREECVRKGRDPLTECANFVRVLQPHNRTHLLACGTGAF
QPTCALITVGH
RGEHVLHLEPGSVESGRGRCPHEPSRPFASFIDGELYT
GLTADFLGREA
MIFRSGGPRPALRSDSDQSLLDPRFVMAARIPENSDDQ
NDKVYFFFSET
VPSPDGGSNHVTVSRVGRVCVNDAGGQRVLVKNKSTFL
KARLVCSVPGPG
GAETHFDQLEDVFLWPKAGKSLEVYALFSTVSAVFQGF
AVCVYHMADIW
EVFNGPFAHRDGPQHGWGYPYGGKVPFPRPGVCPSKMT
AQPGRPFGSTKDY
PDEVLQFARAHPLMFWPVRPRHGRPVLVKTHLAQQLHQI
VVDRVEAEDGT
YDVIFLGTDSGSVLKVIALLQAGGSAEPEEVVLEELQVFKV
PTPITEMEIS
VKRQMLYVGSRLGVAQLRLHQCYGTACAECCLARDPY
CAWDGASCTHY
RPSLGKRRFRQRDIRHGNPALQCLGQSQEEEEAVGLVAAT
MVGTEHNSTF
LECLPKSPQAAVRWLLQRPDGEDQVKTDERVLHTE
GLLFRRLSRFDA
GTYTCTLEHGFSQTVVRLALVVIVASQLDNLFPPEPKPEE
PPARGGLAS
TPPKAWYKDILQLIGFANLPRVDEYCERVWCRGTTECSGC

FRSRSRGKQA
RGKSWAGLELGKKMKSRVHAEHNRTPREVEAT

Amino acids 1 to 782
Tags GST tag N-Terminus

Specifications

Our **Abpromise guarantee** covers the use of **ab163429** in the following tested applications.

The application notes include recommended starting dilutions; optimal dilutions/concentrations should be determined by the end user.

Applications ELISA
Western blot

Form Liquid

Additional notes

Preparation and Storage

Stability and Storage Shipped on dry ice. Upon delivery aliquot and store at -80°C. Avoid freeze / thaw cycles.
pH: 8.00
Constituents: 0.31% Glutathione, 0.79% Tris HCl

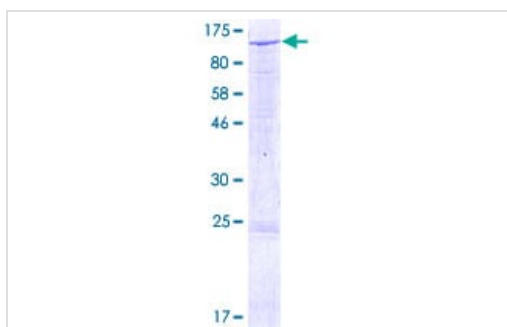
General Info

Function Has chemorepulsive activities for sympathetic axons. Ligand of NRP2.

Sequence similarities Belongs to the semaphorin family.
Contains 1 Ig-like C2-type (immunoglobulin-like) domain.
Contains 1 Sema domain.

Cellular localization Secreted.

Images



ab163429 on a 12.5% SDS-PAGE stained with Coomassie Blue.

SDS-PAGE - Recombinant Human SEMA3G protein
(ab163429)

Please note: All products are "FOR RESEARCH USE ONLY. NOT FOR USE IN DIAGNOSTIC PROCEDURES"

Our Abpromise to you: Quality guaranteed and expert technical support

- Replacement or refund for products not performing as stated on the datasheet
- Valid for 12 months from date of delivery
- Response to your inquiry within 24 hours

- We provide support in Chinese, English, French, German, Japanese and Spanish
- Extensive multi-media technical resources to help you
- We investigate all quality concerns to ensure our products perform to the highest standards

If the product does not perform as described on this datasheet, we will offer a refund or replacement. For full details of the Abpromise, please visit <https://www.abcam.com/abpromise> or contact our technical team.

Terms and conditions

- Guarantee only valid for products bought direct from Abcam or one of our authorized distributors