

Product datasheet

Recombinant Human SENP3 protein ab161918

1 Image

Description

Product name	Recombinant Human SENP3 protein
Expression system	Wheat germ
Protein length	Protein fragment
Animal free	No
Nature	Recombinant
Species	Human
Sequence	EKAGQHSPLREEHVTCVQSILDEFLQTYGSLIPLSTDEVVE KLEDIFQQE FSTPSRKGLVLQLIQSYQRMPGNAMVRGFRVAYKRHVLT MDDLGTLYGQN
Amino acids	301 to 400
Tags	GST tag N-Terminus

Specifications

Our **Abpromise guarantee** covers the use of **ab161918** in the following tested applications.

The application notes include recommended starting dilutions; optimal dilutions/concentrations should be determined by the end user.

Applications	ELISA Western blot
Form	Liquid
Additional notes	

Preparation and Storage

Stability and Storage	Shipped on dry ice. Upon delivery aliquot and store at -80°C. Avoid freeze / thaw cycles. pH: 8.00 Constituents: 0.31% Glutathione, 0.79% Tris HCl
-----------------------	--

General Info

Function

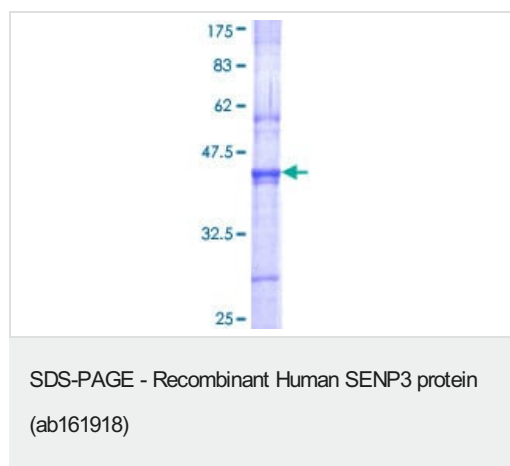
Protease that releases SUMO2 and SUMO3 monomers from sumoylated substrates, but has only weak activity against SUMO1 conjugates. Deconjugates SUMO2 from MEF2D, which increases its transcriptional activation capability. Deconjugates SUMO2 and SUMO3 from CDCA8. Redox sensor that, when redistributed into nucleoplasm, can act as an effector to enhance HIF1A transcriptional activity by desumoylating EP300. Required for rRNA processing through deconjugation of SUMO2 and SUMO3 from nucleophosmin, NPM1. Plays a role in the regulation of sumoylation status of ZNF148. Functions as a component of the Five Friends of Methylated CHTOP (5FMC) complex; the 5FMC complex is recruited to ZNF148 by methylated CHTOP, leading to desumoylation of ZNF148 and subsequent transactivation of ZNF148 target genes.

Sequence similarities

Belongs to the peptidase C48 family.

Cellular localization

Cytoplasm. Nucleus > nucleolus. Nucleus > nucleoplasm. Mainly found in the nucleoplasm, with low levels detected in the cytoplasmic and chromatin fractions (By similarity). Redistributes between the nucleolus and the nucleoplasm in response to mild oxidative stress.

Images

ab161918 on a 12.5% SDS-PAGE stained with Coomassie Blue.

Please note: All products are "FOR RESEARCH USE ONLY. NOT FOR USE IN DIAGNOSTIC PROCEDURES"

Our Abpromise to you: Quality guaranteed and expert technical support

- Replacement or refund for products not performing as stated on the datasheet
- Valid for 12 months from date of delivery
- Response to your inquiry within 24 hours
- We provide support in Chinese, English, French, German, Japanese and Spanish
- Extensive multi-media technical resources to help you
- We investigate all quality concerns to ensure our products perform to the highest standards

If the product does not perform as described on this datasheet, we will offer a refund or replacement. For full details of the Abpromise, please visit <https://www.abcam.com/abpromise> or contact our technical team.

Terms and conditions

- Guarantee only valid for products bought direct from Abcam or one of our authorized distributors