

Product datasheet

Recombinant Human SEPT5 protein ab109972

1 Image

Description

Product name	Recombinant Human SEPT5 protein
Purity	> 90 % SDS-PAGE. ab109972 was purified using conventional chromatography.
Expression system	Escherichia coli
Accession	<u>Q99719</u>
Protein length	Full length protein
Animal free	No
Nature	Recombinant
Species	Human
Sequence	<p>MGSSHHHHHSSGLVPRGSHMGSMSTGLRYKSKLATP EDKQDIDKQYVGF ATLPNQVHRKSVKKGFDFTLMVAGESGLGKSTLVHSLFLT DLYKDRKLLS AEERISQTVEILKHTVDIEEKGVKLLKLTVDTPGFDAVNNT ECWKPITD YDQQFEQYFRDESGLNRNKIQDNRVHCCLYFISPFHGHL RPVDVGFMK LHEKVNIVPLIAKADCLVPSEIRKLERIREEIDKFGIHVYQF PECDSD DEDFKQDRELKESAPFAVIGSNTVVEAKGQQRVRGRLYP WGVEVENQAH CDFVKLNRNMLIRTHMHDLDKDVTCDVHYENYRAHCIQQMTS KLTQDSRMES PIPLPLPTPDAETEKLRMKDEELRRMQEMLQRMKQQMQ DQ</p>
Predicted molecular weight	45 kDa including tags
Amino acids	1 to 369
Tags	His tag N-Terminus

Specifications

Our **Abpromise guarantee** covers the use of **ab109972** in the following tested applications.

The application notes include recommended starting dilutions; optimal dilutions/concentrations should be determined by the end user.

Applications	SDS-PAGE Mass Spectrometry
Mass spectrometry	MALDI-TOF
Form	Liquid

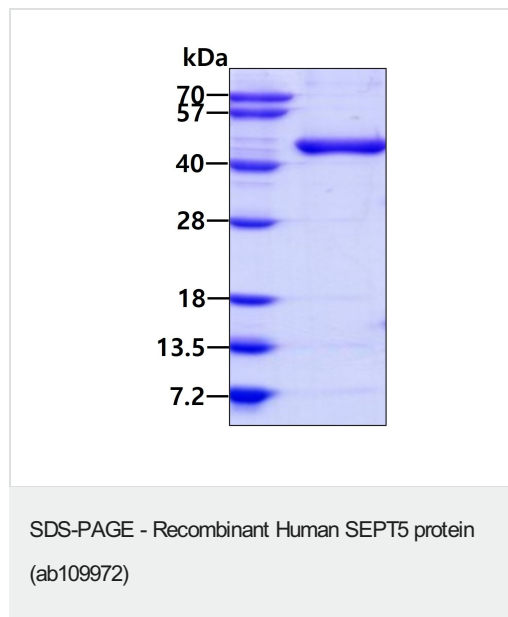
Preparation and Storage

Stability and Storage	Shipped at 4°C. Store at +4°C short term (1-2 weeks). Upon delivery aliquot. Store at -20°C or -80°C. Avoid freeze / thaw cycle. pH: 5.00 Preservative: 1.702% Imidazole Constituents: 10% Glycerol (glycerin, glycerine), 2.922% Sodium chloride, 0.39% MES, 0.0017% PMSF
------------------------------	---

General Info

Function	Filament-forming cytoskeletal GTPase (By similarity). May play a role in cytokinesis (Potential). May play a role in platelet secretion.
Tissue specificity	Expressed at high levels in the CNS, as well as in heart and platelets (at protein level).
Sequence similarities	Belongs to the septin family.
Post-translational modifications	In platelets, phosphorylated in response to thrombin, phorbol-12-myristate-13-acetate and collagen.
Cellular localization	Cytoplasm. Cytoplasm > cytoskeleton. In platelets, found in areas surrounding alpha-granules.

Images



3µg by SDS-PAGE under reducing condition and visualized by coomassie blue stain.

Please note: All products are "FOR RESEARCH USE ONLY. NOT FOR USE IN DIAGNOSTIC PROCEDURES"

Our Abpromise to you: Quality guaranteed and expert technical support

- Replacement or refund for products not performing as stated on the datasheet
- Valid for 12 months from date of delivery
- Response to your inquiry within 24 hours

- We provide support in Chinese, English, French, German, Japanese and Spanish
- Extensive multi-media technical resources to help you
- We investigate all quality concerns to ensure our products perform to the highest standards

If the product does not perform as described on this datasheet, we will offer a refund or replacement. For full details of the Abpromise, please visit <https://www.abcam.com/abpromise> or contact our technical team.

Terms and conditions

- Guarantee only valid for products bought direct from Abcam or one of our authorized distributors