

## Product datasheet

# Recombinant Human Serotonin transporter protein ab132415

[1 Image](#)

### Description

---

**Product name** Recombinant Human Serotonin transporter protein

**Expression system** Wheat germ

**Accession** **P31645**

**Protein length** Full length protein

**Animal free** No

**Nature** Recombinant

**Species** Human

**Sequence**

```
METTPLNSQK QLSACEDGED CQENGLQKV
VPTPGDKVES GQISNGYS AV PSPGAGDDTR
HSIPATTTTL VAEHQGERE TWGKKVDFLL SVIGYAVDLG
NVWRFYICY QNGGGAFLLP YTIMAIFGGI PLFYMELALG
QYHRNGCISI WRKICPIFKG IGYAICIAF YIASYNTIM
AWALYYLISS FTDQLPWTSC KNSWNTGNCT
NYFSEDNITW TLHSTSPAEF FYTRHVLQIH RSKGLQDLGG
ISWQLALCIM LIFTVIYFSI WKGVKTSQKV VVVTATFPYI
ILSVLLVRGA TLPGAWRGVL FYLKPWQKL
LETGVWIDAA AQIFFSLGPG FGVLLAFASY
NKFNNNCYQD ALVTSVVNCM TSFVSGFVIF
TVLGYMAEMR NEDVSEVAKD AGPSLLFITY
AEAIANMPAS TFFAIIFFLM LITLGLDSTF AGLEGVITAV
LDEFPHWAK RRERFVLAVV ITCFFGSLVT
LTFGGAYVVK LLEEYATGPA VLTVALIEAV AVSWFYGITQ
FCRDVKEMLG FSPGWFWRIC WVAISPLFLL
FIICSFLMSP PQLRFLQYNY PYWSIILGYC IGTSSFCIP
TYIAYRLIIT PGTFKERI IK SITPETPTEI PCGDIRLNAV
```

**Predicted molecular weight** 97 kDa including tags

**Amino acids** 1 to 630

**Tags** GST tag N-Terminus

### Specifications

---

Our **Abpromise guarantee** covers the use of **ab132415** in the following tested applications.

The application notes include recommended starting dilutions; optimal dilutions/concentrations should be determined by the end user.

<b>Applications</b>	SDS-PAGE Western blot ELISA
<b>Form</b>	Liquid

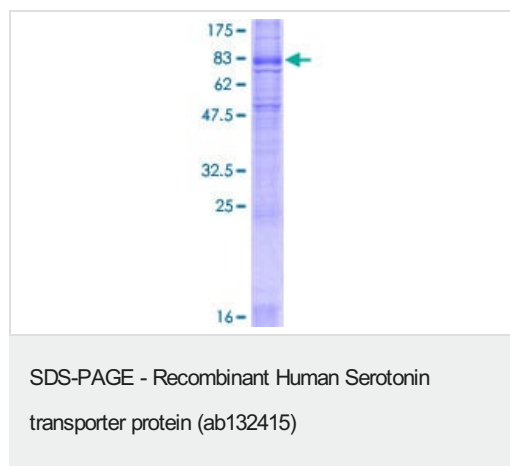
## Preparation and Storage

<b>Stability and Storage</b>	Shipped on dry ice. Upon delivery aliquot and store at -80°C. Avoid freeze / thaw cycles. pH: 8.00 Constituents: 0.31% Glutathione, 0.79% Tris HCl
------------------------------	----------------------------------------------------------------------------------------------------------------------------------------------------------

## General Info

<b>Function</b>	Serotonin transporter whose primary function in the central nervous system involves the regulation of serotonergic signaling via transport of serotonin molecules from the synaptic cleft back into the pre-synaptic terminal for re-utilization. Plays a key role in mediating regulation of the availability of serotonin to other receptors of serotonergic systems. Terminates the action of serotonin and recycles it in a sodium-dependent manner.
<b>Tissue specificity</b>	Expressed in platelets (at protein level).
<b>Sequence similarities</b>	Belongs to the sodium:neurotransmitter symporter (SNF) (TC 2.A.22) family. SLC6A4 subfamily.
<b>Post-translational modifications</b>	Glycosylated; modification with sialylated N-glycans is a requirement for transporters to associate with each other and to function as homooligomeric forms. Phosphorylated at Ser-611, Thr-613 and Thr-616.
<b>Cellular localization</b>	Cell membrane. Endomembrane system. Endosome membrane. Translocates from intracellular locations to the plasma membrane. Density of transporter molecules on the plasma membrane is itself regulated by serotonin.

## Images



12.5% SDS-PAGE analysis of ab132415, stained with Coomassie Blue.

### **Our Abpromise to you: Quality guaranteed and expert technical support**

---

- Replacement or refund for products not performing as stated on the datasheet
- Valid for 12 months from date of delivery
- Response to your inquiry within 24 hours
  
- We provide support in Chinese, English, French, German, Japanese and Spanish
- Extensive multi-media technical resources to help you
- We investigate all quality concerns to ensure our products perform to the highest standards

If the product does not perform as described on this datasheet, we will offer a refund or replacement. For full details of the Abpromise, please visit <https://www.abcam.com/abpromise> or contact our technical team.

### **Terms and conditions**

---

- Guarantee only valid for products bought direct from Abcam or one of our authorized distributors