

Product datasheet

Recombinant human Serpin A5 protein (Active) ab229370

[1 Image](#)

Description

Product name	Recombinant human Serpin A5 protein (Active)	
Biological activity	Measured by its ability to inhibit Thrombin cleavage of substrate Boc-VPR-AMC. The IC ₅₀ for this effect is less or equal to 2 nM.	
Purity	> 90 % SDS-PAGE. ab229370 was purified using conventional chromatography techniques.	
Expression system	Escherichia coli	
Accession	<u>P05154</u>	
Protein length	Full length protein	
Animal free	No	
Nature	Recombinant	
Species	Human	
Sequence	<p>MGSSHHHHHHSSGLVPRGSHMHRHHPREMKKRVEDLHV GATVAPSSRRDF TFDLYRALASAAPSQNIFFSPVSISSLAMLSLGAGSSTK MQILEGLGLN LQKSSEKELHRGFQQLLQELNQPRDGFQLSLGNALFTDL VVDLQDTFVSA MKTLYLADTFPTNFRDSAGAMKQINDYVAKQTKGKIVDLLK NLDSNAVVI MVNYIFFKAKWETSFNHKGTEQDFYVTSETVVRVPMMS REDQYHYLLDR NLSCRVVGVYPYQGNATALFILPSEGKMQQVENGLSEKTLR KWLKMFKKRQ LELYLPKFSIEGSYQLEKVLPSLGISNVFTSHADLSGISNHS NIQVSEMV HKAVVEVDESGTRAAAATGTIFTFRSARLNSQRLVFNRPF LMFVDNNIL FLGKVNRP</p>	
Predicted molecular weight	46 kDa including tags	
Amino acids	20 to 406	
Tags	His tag N-Terminus	
Additional sequence information	This product is the full length protein from aa 20 to 406 including the propeptide. The signal	

peptide is not included (AAH08915).

Specifications

Our **Abpromise guarantee** covers the use of **ab229370** in the following tested applications.

The application notes include recommended starting dilutions; optimal dilutions/concentrations should be determined by the end user.

Applications	Mass Spectrometry SDS-PAGE Functional Studies
Mass spectrometry	MALDI-TOF
Form	Liquid
Additional notes	Previously labelled as Protein C inhibitor.

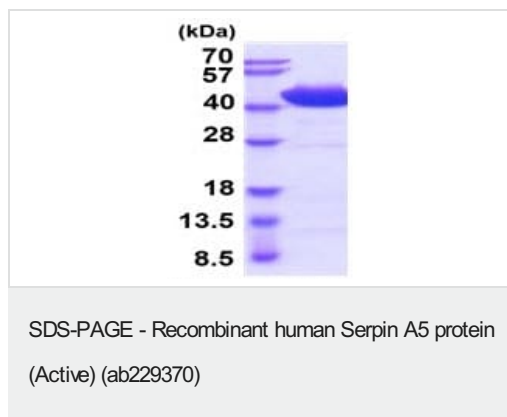
Preparation and Storage

Stability and Storage	Shipped at 4°C. Store at +4°C short term (1-2 weeks). Upon delivery aliquot. Store at -20°C or -80°C. Avoid freeze / thaw cycle. pH: 6.00 Constituents: 0.39% MES, 0.87% Sodium chloride, 10% Glycerol (glycerin, glycerine) This product is an active protein and may elicit a biological response in vivo, handle with caution.
------------------------------	--

General Info

Function	Inhibits activated protein C as well as plasminogen activators.
Tissue specificity	Expressed by the liver and secreted in plasma.
Sequence similarities	Belongs to the serpin family.
Cellular localization	Secreted.

Images



15% SDS-PAGE analysis of 3 µg ab229370.

Please note: All products are "FOR RESEARCH USE ONLY. NOT FOR USE IN DIAGNOSTIC PROCEDURES"

Our Abpromise to you: Quality guaranteed and expert technical support

- Replacement or refund for products not performing as stated on the datasheet
- Valid for 12 months from date of delivery
- Response to your inquiry within 24 hours

- We provide support in Chinese, English, French, German, Japanese and Spanish
- Extensive multi-media technical resources to help you
- We investigate all quality concerns to ensure our products perform to the highest standards

If the product does not perform as described on this datasheet, we will offer a refund or replacement. For full details of the Abpromise, please visit <https://www.abcam.com/abpromise> or contact our technical team.

Terms and conditions

- Guarantee only valid for products bought direct from Abcam or one of our authorized distributors