

Product datasheet

Recombinant Human SERPINE2/PN-1 protein ab159115

1 Image

Description

Product name	Recombinant Human SERPINE2/PN-1 protein
Expression system	Wheat germ
Protein length	Full length protein
Animal free	No
Nature	Recombinant
Species	Human
Sequence	MNWHLPLFLLASVTLPSICSHFNPLSLEELGSNTGIQVFNQ MKS RPHDN MISPHGIASVLGMLQLGADGRTKKQLAMVMRYGVNGVGKI LKKINKAIV SKKNKDIVTANAVFVK NASEIEVPFVTRNKDVFQCEVRN VNFEDPASAC DSINAWVKNETRDMIDNLLSPDLIDGVLTRLVLVNAVYFKG LWKS RFQPE NTKKRTFVAADGKSYQVPMLAQLSVFRCGSTSAPNDLWY NFIELPYHGES ISMLIALPTESSTPLSAIIPHISTKTIDSWMSIMVPKRVQVILP KFTAVA QTDLKEPLKVLGITDMFDSSKANFAKITTGSENLHVSHILQ KAKIEVSED GTKASAATTAILIARSSPPWFVDRPFLFFIRHNPTGAVLFM GQINKP
Amino acids	1 to 398
Tags	GST tag N-Terminus

Specifications

Our **Abpromise guarantee** covers the use of **ab159115** in the following tested applications.

The application notes include recommended starting dilutions; optimal dilutions/concentrations should be determined by the end user.

Applications	Western blot ELISA
Form	Liquid

Additional notes

This product was previously labelled as SERPINE2.

The Molecular Weight of this protein (including tags) is 70.4 kDa.

Preparation and Storage

Stability and Storage

Shipped on dry ice. Upon delivery aliquot and store at -80°C. Avoid freeze / thaw cycles.

pH: 8.00

Constituents: 0.31% Glutathione, 0.79% Tris HCl

General Info

Function

Serine protease inhibitor with activity toward thrombin, trypsin, and urokinase. Promotes neurite extension by inhibiting thrombin. Binds heparin.

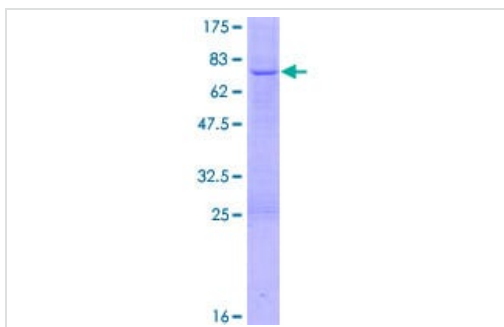
Sequence similarities

Belongs to the serpin family.

Cellular localization

Secreted > extracellular space.

Images



ab159115 on a 12.5% SDS-PAGE stained with Coomassie Blue.

SDS-PAGE - Recombinant Human SERPINE2/PN-1
protein (ab159115)

Please note: All products are "FOR RESEARCH USE ONLY. NOT FOR USE IN DIAGNOSTIC PROCEDURES"

Our Abpromise to you: Quality guaranteed and expert technical support

- Replacement or refund for products not performing as stated on the datasheet
- Valid for 12 months from date of delivery
- Response to your inquiry within 24 hours
- We provide support in Chinese, English, French, German, Japanese and Spanish
- Extensive multi-media technical resources to help you
- We investigate all quality concerns to ensure our products perform to the highest standards

If the product does not perform as described on this datasheet, we will offer a refund or replacement. For full details of the Abpromise,

please visit <https://www.abcam.com/abpromise> or contact our technical team.

Terms and conditions

- Guarantee only valid for products bought direct from Abcam or one of our authorized distributors