

Product datasheet

Recombinant Human SGLT2 protein (Tagged)  
ab236175

1 Image

Description

Product name	Recombinant Human SGLT2 protein (Tagged)		
Purity	> 90 % SDS-PAGE.		
Expression system	Escherichia coli		
Accession	<b>P31639</b>		
Protein length	Protein fragment		
Animal free	No		
Nature	Recombinant		
Species	Human		
Sequence	MEEHTEAGSAPEMGAQKALIDNPADILVIAAYFLLVIGVGL WSMCRTNRG TVGGYFLAGRSMVWWPVGASLFASNIGSGHFVGLAGTGA ASGLAVAGFEW NA		
Predicted molecular weight	16 kDa including tags		
Amino acids	1 to 102		
Tags	His tag N-Terminus		
Additional sequence information	N-terminal 10xHis-tagged and C-terminal Myc-tagged.		

Specifications

Our **Abpromise guarantee** covers the use of **ab236175** in the following tested applications.

The application notes include recommended starting dilutions; optimal dilutions/concentrations should be determined by the end user.

Applications	SDS-PAGE
Form	Liquid

Preparation and Storage

Stability and Storage	Shipped at 4°C. Store at -20°C or -80°C. Avoid freeze / thaw cycle. pH: 7.2
-----------------------	--

Constituents: Tris buffer, 50% Glycerol (glycerin, glycerine)

## General Info

### Function

Sodium-dependent glucose transporter. Has a Na(+) to glucose coupling ratio of 1:1. Efficient substrate transport in mammalian kidney is provided by the concerted action of a low affinity high capacity and a high affinity low capacity Na(+)/glucose cotransporter arranged in series along kidney proximal tubules.

### Involvement in disease

Defects in SLC5A2 are the cause of renal glucosuria (GLYS1) [MIM:233100]. GLYS1 is an autosomal recessive disorder characterized by a normal fasting serum glucose concentration and persistent isolated glucosuria, with a normal glucose tolerance test.

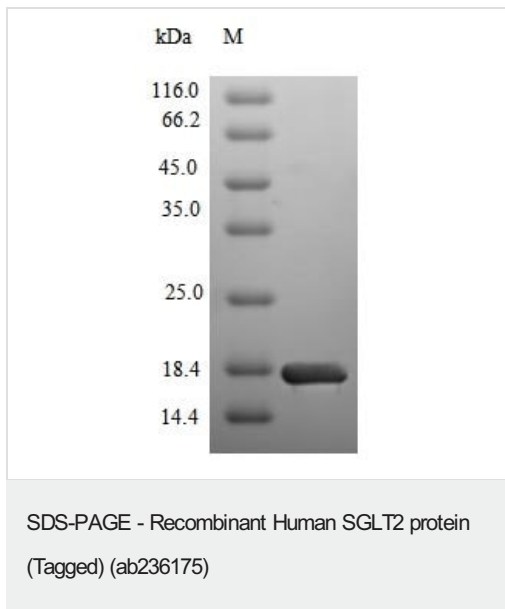
### Sequence similarities

Belongs to the sodium:solute symporter (SSF) (TC 2.A.21) family.

### Cellular localization

Membrane.

## Images



(Tris-Glycine gel) Discontinuous SDS-PAGE (reduced) with 5% enrichment gel and 15% separation gel using ab236175.

**Please note:** All products are "FOR RESEARCH USE ONLY. NOT FOR USE IN DIAGNOSTIC PROCEDURES"

## Our Abpromise to you: Quality guaranteed and expert technical support

- Replacement or refund for products not performing as stated on the datasheet
- Valid for 12 months from date of delivery
- Response to your inquiry within 24 hours
- We provide support in Chinese, English, French, German, Japanese and Spanish
- Extensive multi-media technical resources to help you
- We investigate all quality concerns to ensure our products perform to the highest standards

If the product does not perform as described on this datasheet, we will offer a refund or replacement. For full details of the Abpromise,

please visit <https://www.abcam.com/abpromise> or contact our technical team.

#### **Terms and conditions**

---

- Guarantee only valid for products bought direct from Abcam or one of our authorized distributors