

## Product datasheet

# Recombinant Human SH3GL3 protein (His tag) ab202261

[1 Image](#)

### Description

---

<b>Product name</b>	Recombinant Human SH3GL3 protein (His tag)	
<b>Purity</b>	> 90 % SDS-PAGE. ab202261 was purified using conventional chromatography.	
<b>Expression system</b>	Escherichia coli	
<b>Accession</b>	<u><a href="#">Q99963</a></u>	
<b>Protein length</b>	Full length protein	
<b>Animal free</b>	No	
<b>Nature</b>	Recombinant	
<b>Species</b>	Human	
<b>Sequence</b>	MGSSHHHHHSSGLVPRGSHMGSMVAGLKKQFHKAS QLFSEKISGAEGT KLDDEFDLMERKIDVTNKVVAEILSKTTEYLQPNPAYRAKL GMLNTVSKI RGQVKTTGYPQTEGLLGDCMLKYGKELGEDSTFGNALIEV GESMKLMAEV KDSLIDINVKQTFIDPLQLLQDKDLKEIGHHLKKLEGRRLDY DYKKKRVGK IPDEEVRQAVEKFEESKELAERSMFNFLENDVEQVSQLA V FIEAALDYHRQSTEILQELQSKLQMRISAASSVPRREYKPR PVKRSSSEL NGVSTTSVVKTTGSNIPMDQPCCRGLYDFEPENQGELGF KEGDIITLTNQ IDENWYEGMIHGESGFFPINYEVIVPLPQ	
<b>Predicted molecular weight</b>	42 kDa including tags	
<b>Amino acids</b>	1 to 347	
<b>Tags</b>	His tag N-Terminus	
<b>Additional sequence information</b>	NCBI Accession No.: NP_003018	

### Specifications

---

Our [Abpromise guarantee](#) covers the use of **ab202261** in the following tested applications.

The application notes include recommended starting dilutions; optimal dilutions/concentrations should be determined by the end user.

<b>Applications</b>	Mass Spectrometry SDS-PAGE
<b>Mass spectrometry</b>	MALDI-TOF
<b>Form</b>	Liquid

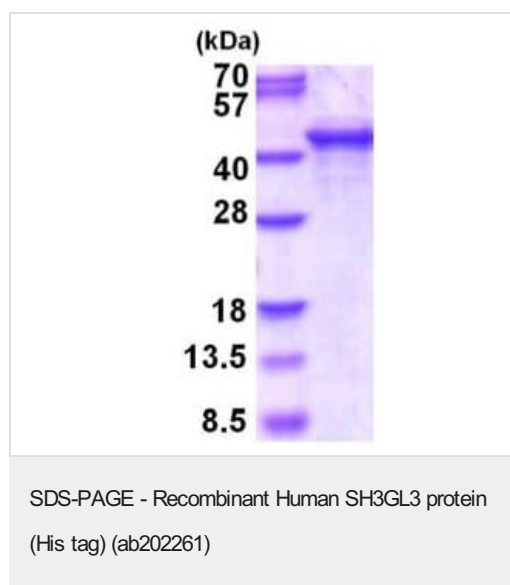
### Preparation and Storage

<b>Stability and Storage</b>	Shipped at 4°C. Store at +4°C short term (1-2 weeks). Upon delivery aliquot. Store at -20°C or -80°C. Avoid freeze / thaw cycle. pH: 7.40 Constituents: 10% Glycerol (glycerin, glycerine), 0.02% DTT, 89% PBS
------------------------------	--

### General Info

<b>Function</b>	Implicated in endocytosis. May recruit other proteins to membranes with high curvature.
<b>Tissue specificity</b>	Brain and testis.
<b>Sequence similarities</b>	Belongs to the endophilin family. Contains 1 BAR domain. Contains 1 SH3 domain.
<b>Domain</b>	An N-terminal amphipathic helix, the BAR domain and a second amphipathic helix inserted into helix 1 of the BAR domain (N-BAR domain) induce membrane curvature and bind curved membranes.
<b>Cellular localization</b>	Cytoplasm. Early endosome membrane. Associated with postsynaptic endosomes in hippocampal neurons. Associated with presynaptic endosomes in olfactory neurons.

### Images



15% SDS-PAGE analysis of ab202261 (3 µg)

### **Our Abpromise to you: Quality guaranteed and expert technical support**

---

- Replacement or refund for products not performing as stated on the datasheet
- Valid for 12 months from date of delivery
- Response to your inquiry within 24 hours
  
- We provide support in Chinese, English, French, German, Japanese and Spanish
- Extensive multi-media technical resources to help you
- We investigate all quality concerns to ensure our products perform to the highest standards

If the product does not perform as described on this datasheet, we will offer a refund or replacement. For full details of the Abpromise, please visit <https://www.abcam.com/abpromise> or contact our technical team.

### **Terms and conditions**

---

- Guarantee only valid for products bought direct from Abcam or one of our authorized distributors