

## Product datasheet

# Recombinant human SIK3 protein ab136351

[5 Images](#)

### Description

---

<b>Product name</b>	Recombinant human SIK3 protein
<b>Biological activity</b>	The specific activity of ab136351 was determined to be 140 nmol/min/mg.
<b>Purity</b>	> 90 % Densitometry. Affinity purified.
<b>Expression system</b>	Baculovirus infected Sf9 cells
<b>Accession</b>	<u><a href="#">Q9Y2K2</a></u>
<b>Protein length</b>	Protein fragment
<b>Animal free</b>	No
<b>Nature</b>	Recombinant
<b>Species</b>	Human
<b>Sequence</b>	MPARIGYYEIDRTIGKGNFAVVKRATHLVTKAKVAIKIIDKTQ LDEENLK KIFREVQIMKMLCHPHIIRLYQVMETERMYLVTEYASGGEIF DHLVAHG RMAEKEARRKFKQVTAVYFCHCRNIVHRDLKAENLLDA NLNIKIADFG FSNLFTPGQLLKTWCGSPPYAAPELFEGKEYDGPKVDIW SLGVVLYVLVC GALPFDGSTLQNLRARVLSGKFRIPFFMSTECEHLIRHMLV LDPNKRLSM EQICKHKWMKLGADPNFDRLIAECQQLKEERQVDPLNE DVLLAMEDMGL DKEQTLQ
<b>Predicted molecular weight</b>	62 kDa including tags
<b>Amino acids</b>	1 to 307
<b>Tags</b>	GST tag N-Terminus

### Specifications

---

Our **Abpromise guarantee** covers the use of **ab136351** in the following tested applications.

The application notes include recommended starting dilutions; optimal dilutions/concentrations should be determined by the end user.

<b>Applications</b>	Western blot Functional Studies
---------------------	------------------------------------

SDS-PAGE

<b>Form</b>	Liquid
<b>Additional notes</b>	<b>ab204852</b> (AMARA substrate peptide for SIK + AMPK) can be utilized as a substrate for assessing kinase activity

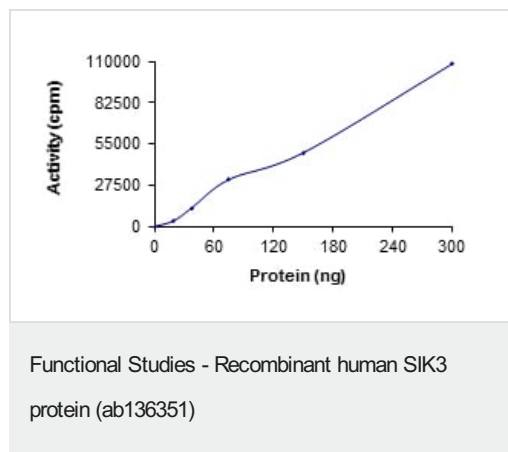
## Preparation and Storage

<b>Stability and Storage</b>	Shipped on dry ice. Upon delivery aliquot and store at -80°C. Avoid freeze / thaw cycles. pH: 7.50 Constituents: 0.31% Glutathione, 0.002% PMSF, 0.004% DTT, 0.79% Tris HCl, 0.003% EDTA, 25% Glycerol (glycerin, glycerine), 0.88% Sodium chloride This product is an active protein and may elicit a biological response in vivo, handle with caution.
------------------------------	---

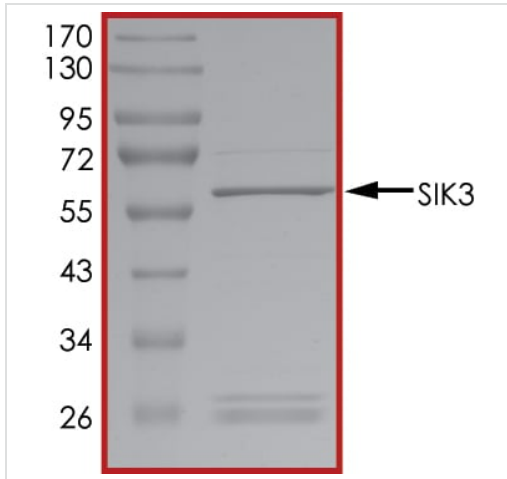
## General Info

<b>Sequence similarities</b>	Belongs to the protein kinase superfamily. CAMK Ser/Thr protein kinase family. SNF1 subfamily. Contains 1 protein kinase domain. Contains 1 UBA domain.
<b>Post-translational modifications</b>	Phosphorylated at Thr-163 by STK11/LKB1 in complex with STE20-related adapter-alpha (STRADA) pseudo kinase and CAB39.
<b>Cellular localization</b>	Cytoplasm. Locates to punctate structures within the cytoplasm on binding to YWHAZ.

## Images

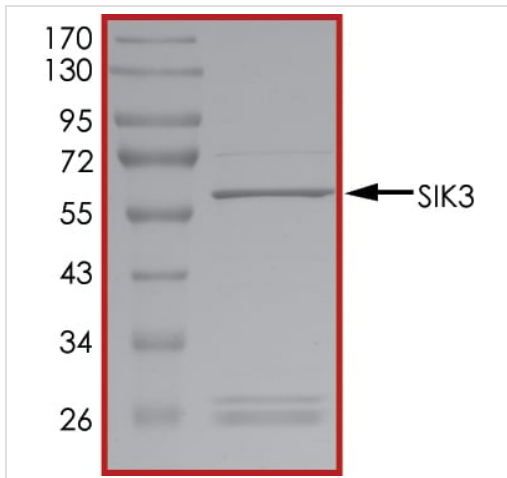


The specific activity of SIK3 (ab136351) was determined to be 128 nmol/min/mg as per activity assay protocol



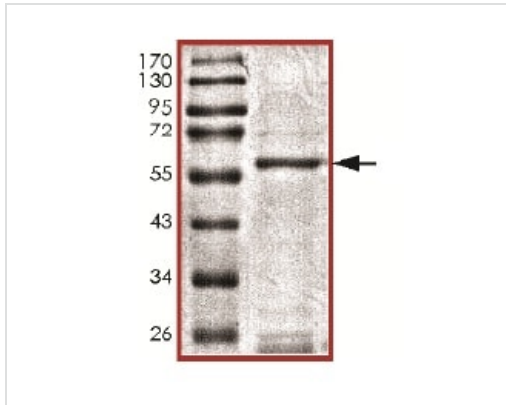
SDS PAGE analysis of ab136351

SDS-PAGE - Recombinant human SIK3 protein  
(ab136351)



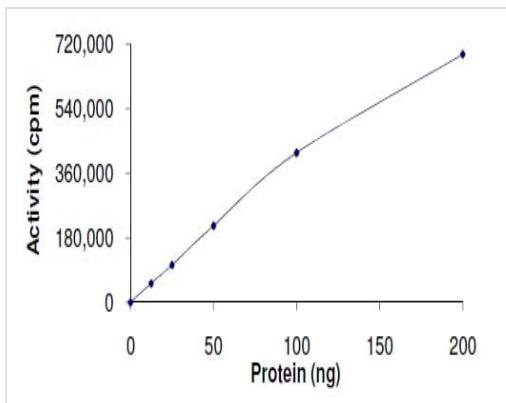
SDS PAGE analysis of ab136351

SDS-PAGE - Recombinant human SIK3 protein  
(ab136351)



SDS-PAGE analysis of ab136351.

SDS-PAGE - Recombinant human SIK3 protein (ab136351)



The specific activity of ab136351 was determined to be 140 nmol/min/mg.

Functional Studies - Recombinant human SIK3 protein (ab136351)

**Please note:** All products are "FOR RESEARCH USE ONLY. NOT FOR USE IN DIAGNOSTIC PROCEDURES"

### Our Abpromise to you: Quality guaranteed and expert technical support

- Replacement or refund for products not performing as stated on the datasheet
- Valid for 12 months from date of delivery
- Response to your inquiry within 24 hours
- We provide support in Chinese, English, French, German, Japanese and Spanish
- Extensive multi-media technical resources to help you
- We investigate all quality concerns to ensure our products perform to the highest standards

If the product does not perform as described on this datasheet, we will offer a refund or replacement. For full details of the Abpromise, please visit <https://www.abcam.com/abpromise> or contact our technical team.

### **Terms and conditions**

---

- Guarantee only valid for products bought direct from Abcam or one of our authorized distributors