

Product datasheet

Recombinant Human SLAMF6 protein (His tag) ab219428

[1 Image](#)

Description

Product name	Recombinant Human SLAMF6 protein (His tag)
Purity	> 95 % SDS-PAGE. Affinity purified
Endotoxin level	< 1.000 Eu/μg
Expression system	Baculovirus infected insect cells
Accession	<u>Q96DU3</u>
Protein length	Protein fragment
Animal free	No
Nature	Recombinant
Species	Human
Sequence	ADPQSSLTPL MVNGILGESV TLPLEFPAGE KVNFIWLFN ETSLAFMPH ETKSPEIHVT NPKQGKRLNF TQSYSLQLSN LKMEDTGSYR AQISTKTS AK LSSYTLRILR QLRNIQVTNH SQLFQNMTC E LHLTCSVEDA DDNVSFRWEA LGNTLSSQPN LTVSWDPRIS SEQDYTCIAE NAVSNLSFSV SAQKLCEDVK IQYTDTKMHH HHHH
Predicted molecular weight	24 kDa including tags
Amino acids	22 to 226
Tags	His tag C-Terminus
Additional sequence information	Extracellular domain (NP_001171643).

Specifications

Our **Abpromise guarantee** covers the use of **ab219428** in the following tested applications.

The application notes include recommended starting dilutions; optimal dilutions/concentrations should be determined by the end user.

Applications SDS-PAGE

Form Liquid

Preparation and Storage

Stability and Storage

Shipped at 4°C. Store at +4°C short term (1-2 weeks). Upon delivery aliquot. Store at -20°C or -80°C. Avoid freeze / thaw cycle.

pH: 7.40

Constituents: 90% PBS, 10% Glycerol (glycerin, glycerine)

General Info

Function

Triggers cytolytic activity only in natural killer cells (NK) expressing high surface densities of natural cytotoxicity receptors.

Tissue specificity

Expressed by all (resting and activated) natural killer cells (NK), T- and B-lymphocytes.

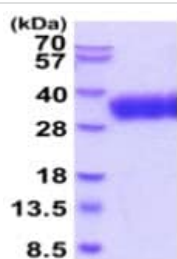
Sequence similarities

Contains 1 Ig-like (immunoglobulin-like) domain.

Cellular localization

Cell membrane.

Images



15% SDS-PAGE analysis of ab219428 (3µg).

SDS-PAGE - Recombinant Human SLAMF6 protein
(His tag) (ab219428)

Please note: All products are "FOR RESEARCH USE ONLY. NOT FOR USE IN DIAGNOSTIC PROCEDURES"

Our Abpromise to you: Quality guaranteed and expert technical support

- Replacement or refund for products not performing as stated on the datasheet
- Valid for 12 months from date of delivery
- Response to your inquiry within 24 hours
- We provide support in Chinese, English, French, German, Japanese and Spanish
- Extensive multi-media technical resources to help you
- We investigate all quality concerns to ensure our products perform to the highest standards

If the product does not perform as described on this datasheet, we will offer a refund or replacement. For full details of the Abpromise, please visit <https://www.abcam.com/abpromise> or contact our technical team.

Terms and conditions

- Guarantee only valid for products bought direct from Abcam or one of our authorized distributors