

Product datasheet

Recombinant Human SLAMF7/CS1 protein (Tagged)  
ab271745

1 Image

Description	
Product name	Recombinant Human SLAMF7/CS1 protein (Tagged)
Purity	>= 90 % SDS-PAGE.
Expression system	HEK 293 cells
Accession	<u>Q9NQ25</u>
Protein length	Protein fragment
Animal free	No
Nature	Recombinant
Species	Human
Sequence	SGPVKELV GSVGGAVTFP LKSKVKQVDS MWTFNTPPL VTIQPEGGTI VTQNRNRER VDFPDGGYSL KLSKLKKNDS GIYVGYSS SLQQPSTQEY VLHVEHLSK PKVTMGLQSN KNGTCVTNLT CCMEHGEEEDV IYWKALGQA ANESHNGSIL PISWRWGESD MTFICVARNP VSRNFSSPIL ARKLCEGAAD DPDSSM
Predicted molecular weight	25 kDa
Amino acids	23 to 226
Tags	His tag C-Terminus , Avi tag C-Terminus
Additional sequence information	Extracellular domain.

Specifications	
Our <b>Abpromise guarantee</b> covers the use of <b>ab271745</b> in the following tested applications.	
The application notes include recommended starting dilutions; optimal dilutions/concentrations should be determined by the end user.	
Applications	SDS-PAGE
Form	Liquid

Preparation and Storage	
-------------------------	--

## Stability and Storage

Shipped on Dry Ice. Store at -80°C. Avoid freeze / thaw cycle.

pH: 7.40

Constituents: 0.13% Sodium phosphate, 0.64% Sodium chloride, 0.02% Potassium chloride, 20% Glycerol (glycerin, glycerine)

## General Info

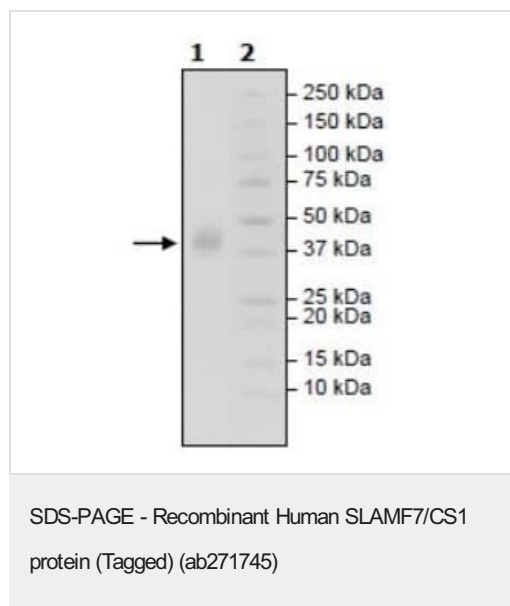
### Relevance

SLAMF7 contains one Ig-like C2-type (immunoglobulin-like) domain. Isoform 1 mediates NK cell activation through a SAP-independent extracellular signal-regulated ERK-mediated pathway. It may play a role in lymphocyte adhesion. Isoform 3 does not mediate any activation. SAP can bind the cytoplasmic tail of isoform 1 when phosphorylated in the presence of Fyn (in vitro). SLAMF7 is expressed in spleen, lymph node, peripheral blood leukocytes, bone marrow, small intestine, stomach, appendix, lung and trachea. Expression was detected in NK cells, activated B-cells, NK-cell line but not in promyelocytic, B-, or T-cell lines. The isoform 3 is expressed at much lower level than isoform 1. There are three named isoforms.

### Cellular localization

Membrane; Single-pass type I membrane protein.

## Images



SDS-PAGE analysis of 4 µg ab271745.

**Please note:** All products are "FOR RESEARCH USE ONLY. NOT FOR USE IN DIAGNOSTIC PROCEDURES"

## Our Abpromise to you: Quality guaranteed and expert technical support

- Replacement or refund for products not performing as stated on the datasheet
- Valid for 12 months from date of delivery
- Response to your inquiry within 24 hours
- We provide support in Chinese, English, French, German, Japanese and Spanish
- Extensive multi-media technical resources to help you

- We investigate all quality concerns to ensure our products perform to the highest standards

If the product does not perform as described on this datasheet, we will offer a refund or replacement. For full details of the Abpromise, please visit <https://www.abcam.com/abpromise> or contact our technical team.

#### **Terms and conditions**

---

- Guarantee only valid for products bought direct from Abcam or one of our authorized distributors