

Recombinant Human SLC27A5/BAL protein ab161232

1 Image

Description	
Product name	Recombinant Human SLC27A5/BAL protein
Expression system	Wheat germ
Protein length	Full length protein
Animal free	No
Nature	Recombinant
Species	Human
Sequence	MGVRQQALALLLLLLLLLWGLGQPVWPVAVALTLRWLLGD PTCCVLLGLAM LARPWLGPWVPHGLSLAAAAALATLLPARLPPGLRWLPA DVIFLAKILHL GLKIRGCLSRQPPDTFVDAFERRARAQPGRALLVWTGPG AGSVTFGELDA RACQAAWALKAE LGDPASLCAGEPTALLVLASQAVPALC MWLGLAKLGCP TAWINPHGRGMPLAHSVLSGARVLVDPDLRESLEEILP KLQAENIRCF YLSHTSPTPGVGALGAALDAAPSHVPADLRAGITWRSP ALFYTS GTTG LPKPAILTHERVLQMSKMLSLSGATADDVYTVLPLYHVM GLVVGILGCL DLGATCVLAPKFSTSCFWDDCRQHGVTVILYVGELLRYLC NIPQQPEDRT HTVRLAMGNGLRADVWETFQQRF GPIRWEVYGSTEGNM GLVNYVGRCGA LGKMSCLLRMLSPFELVQFDMEAAEPVRDNQGFCIPVGL GEPGLLLTKVV SQQPFVGYRGPRELSERKLVRNVRQSGDVYYNTGDVLAM DREGFLYFRDR LGDTFRWKGENVSTHEVEGVLSQVDFLQQVNVYGVVCVP GCEGKVGMAAVQ LAPGQTFDGEKLYQHVRWL PAYATPHFIRIQDAMEVTST FKLMKTRLVR EGFNVGIVDPLFVL DNRAQSFRPLTAEMYQAVCEGTWR L

Amino acids	1 to 690
Tags	GST tag N-Terminus

Specifications

Our **Abpromise guarantee** covers the use of **ab161232** in the following tested applications.

The application notes include recommended starting dilutions; optimal dilutions/concentrations should be determined by the end user.

Applications	ELISA Western blot
Form	Liquid
Additional notes	This product was previously labelled as SLC27A5.

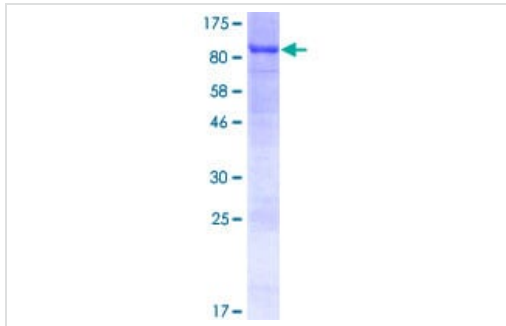
Preparation and Storage

Stability and Storage	Shipped on dry ice. Upon delivery aliquot and store at -80°C. Avoid freeze / thaw cycles. pH: 8.00 Constituents: 0.31% Glutathione, 0.79% Tris HCl
------------------------------	--

General Info

Function	Acyl-CoA synthetase involved in bile acid metabolism. Proposed to catalyze the first step in the conjugation of C24 bile acids (choloneates) to glycine and taurine before excretion into bile canaliculi by activating them to their CoA thioesters. Seems to activate secondary bile acids entering the liver from the enterohepatic circulation. In vitro, also activates 3-alpha,7-alpha,12-alpha-trihydroxy-5-beta-cholestanate (THCA), the C27 precursor of cholic acid deriving from the de novo synthesis from cholesterol.
Tissue specificity	Predominantly expressed in liver.
Sequence similarities	Belongs to the ATP-dependent AMP-binding enzyme family.
Cellular localization	Endoplasmic reticulum membrane.

Images



SDS-PAGE - Recombinant Human SLC27A5/BAL
protein (ab161232)

ab161232 on a 12.5% SDS-PAGE stained with Coomassie Blue.

Please note: All products are "FOR RESEARCH USE ONLY. NOT FOR USE IN DIAGNOSTIC PROCEDURES"

Our Abpromise to you: Quality guaranteed and expert technical support

- Replacement or refund for products not performing as stated on the datasheet
- Valid for 12 months from date of delivery
- Response to your inquiry within 24 hours
- We provide support in Chinese, English, French, German, Japanese and Spanish
- Extensive multi-media technical resources to help you
- We investigate all quality concerns to ensure our products perform to the highest standards

If the product does not perform as described on this datasheet, we will offer a refund or replacement. For full details of the Abpromise, please visit <https://www.abcam.com/abpromise> or contact our technical team.

Terms and conditions

- Guarantee only valid for products bought direct from Abcam or one of our authorized distributors