

Recombinant Human SLC35B2 protein ab166331

1 Image

Description	
Product name	Recombinant Human SLC35B2 protein
Expression system	Wheat germ
Protein length	Full length protein
Animal free	No
Nature	Recombinant
Species	Human
Sequence	MDARWWAVVVLAAPSLGAGGETPEAPPESWTQLWFF RFVVNAAGYASFM VPGYLLVQYFRRKNYLETGRGLCFPLVKACVFGNEPKAS DEVPLAPRTEA AETTPMWQALKLLFCATGLQVSYLTWGVLQERVMTRSYG ATATSPGERFT DSQFLVLMNRVLALVAGLSCVLCKQPRHGAPMYRYSFAS LSNVLSSWCQ YEALKFVSFPTQVLAKASKVIPVMLMGKLVSRRSYEHWEY LTATLISIGV SMFLLSSGPEPRSSPATTLSGLILLAGYAFDSFTSNWQDA LFAYKMSSV QMMFGVNFFSCLFTVGSLLSEQGALLEGTRFMGRHSEFAA HALLSICSAC GQLFIFYTIGQFGAAVFTIIMTLRQAFAILLSCLLYGHTVTVVG GLGVAV VFAALLLRVYARGRLKQRGKKAVPVESPVQKV
Amino acids	1 to 432
Tags	GST tag N-Terminus

Specifications	
Our Abpromise guarantee covers the use of ab166331 in the following tested applications.	
The application notes include recommended starting dilutions; optimal dilutions/concentrations should be determined by the end user.	
Applications	ELISA Western blot
Form	Liquid

Additional notes

Preparation and Storage

Stability and Storage

Shipped on dry ice. Upon delivery aliquot and store at -80°C. Avoid freeze / thaw cycles.

pH: 8.00

Constituents: 0.31% Glutathione, 0.79% Tris HCl

General Info

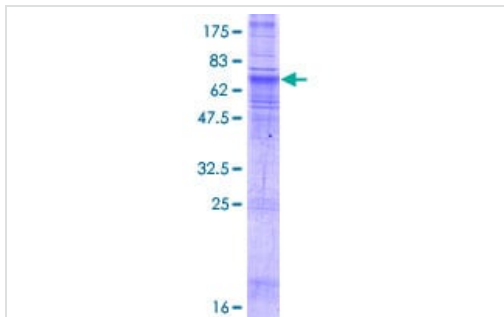
Relevance

Sulfotransferases use an activated form of sulfate, 3-prime-phosphoadenosine 5-prime-phosphosulfate (PAPS), as a common sulfate donor for sulfation of glycoproteins, proteoglycans, and glycolipids in the endoplasmic reticulum and Golgi apparatus. SLC35B2 is located in the microsomal membrane and transports PAPS from the cytosol, where it is synthesized, into the Golgi lumen.

Cellular localization

Golgi apparatus membrane; Multi-pass membrane protein

Images



SDS-PAGE - Recombinant Human SLC35B2 protein
(ab166331)

ab166331 on a 12.5% SDS-PAGE stained with Coomassie Blue.

Please note: All products are "FOR RESEARCH USE ONLY. NOT FOR USE IN DIAGNOSTIC PROCEDURES"

Our Abpromise to you: Quality guaranteed and expert technical support

- Replacement or refund for products not performing as stated on the datasheet
- Valid for 12 months from date of delivery
- Response to your inquiry within 24 hours
- We provide support in Chinese, English, French, German, Japanese and Spanish
- Extensive multi-media technical resources to help you
- We investigate all quality concerns to ensure our products perform to the highest standards

If the product does not perform as described on this datasheet, we will offer a refund or replacement. For full details of the Abpromise, please visit <https://www.abcam.com/abpromise> or contact our technical team.

Terms and conditions

- Guarantee only valid for products bought direct from Abcam or one of our authorized distributors