

Recombinant Human SLC6A19 protein ab166274

1 Image

Description

Product name	Recombinant Human SLC6A19 protein
Expression system	Wheat germ
Protein length	Full length protein
Animal free	No
Nature	Recombinant
Species	Human
Sequence	MVRLVLPNPGLDARIPSLAELETIEQEEASSRPKWDNKAQ YMLTCLGFCV GLGNVWRFPYLCQSHGGGAFMIPFLILLVLEGIPLLYLEFAI GQRLRRGS LGVWSSIHPALKGLGLASMLTSFMVGLYNTIISWIMWYLF NSFQEPLPW SDCPLNENQTGYVDECARSSPVDYFWYRETLNISTSISDS GSIQWWMLLC LACAWSVLYMCTIRGIETTGKAVYITSTLPYVVLTI FLIRGLTL KGATNG MFLFTP NVTELAQPD TWLDAGA QVFFSFS LAFGGLISFSS YNSVHNNCE KDSVIVSIINGFTSVYVAIVVYSVIGFRATQRYDDCFSTNILT NGFDL PEGNVTQENFVDMQQRCNASDPAAYAQLVFQTC DINAFL SEAVEGTGLAF MFT EATKMPLSPLWSVLFFIMLFCLGLSSMFGNMEGVVV PLQDLRVIP PKWPKEVLTGLICLGTFLIGFIFTLNSGQYWLSLLDSYAGSI PLLIIAFC EMFSVVVYGVDRFNKDIEFMIGHKPNIFWQVTWRVVSPL LMLIIFLFFF VVEVSQELTYSWDPGYEEFPKSKISYPNWWYVVVVVA GVPSLTIPGY AMKLRNHCQKPGDHQGLVSTLSTASMNGDLKY
Amino acids	1 to 634
Tags	GST tag N-Terminus

Specifications

Our **Abpromise guarantee** covers the use of **ab166274** in the following tested applications.

The application notes include recommended starting dilutions; optimal dilutions/concentrations should be determined by the end user.

Applications ELISA
Western blot

Form Liquid

Additional notes

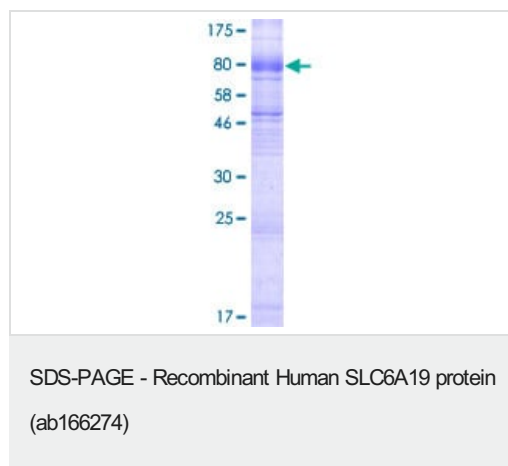
Preparation and Storage

Stability and Storage Shipped on dry ice. Upon delivery aliquot and store at -80°C. Avoid freeze / thaw cycles.
pH: 8.00
Constituents: 0.31% Glutathione, 0.79% Tris HCl

General Info

Relevance Transporter that mediates epithelial resorption of neutral amino acids across the apical membrane of epithelial cells in the kidney and intestine. It appears that leucine is the preferred substrate, but all large neutral non-aromatic L-amino acids bind to this transporter. Uptake of leucine is sodium-dependent. In contrast to other members of the neurotransmitter transporter family, does not appear to be chloride-dependent

Images



ab166274 on a 12.5% SDS-PAGE stained with Coomassie Blue.

Please note: All products are "FOR RESEARCH USE ONLY. NOT FOR USE IN DIAGNOSTIC PROCEDURES"

Our Abpromise to you: Quality guaranteed and expert technical support

- Replacement or refund for products not performing as stated on the datasheet

- Valid for 12 months from date of delivery
- Response to your inquiry within 24 hours
- We provide support in Chinese, English, French, German, Japanese and Spanish
- Extensive multi-media technical resources to help you
- We investigate all quality concerns to ensure our products perform to the highest standards

If the product does not perform as described on this datasheet, we will offer a refund or replacement. For full details of the Abpromise, please visit <https://www.abcam.com/abpromise> or contact our technical team.

Terms and conditions

- Guarantee only valid for products bought direct from Abcam or one of our authorized distributors