

## Product datasheet

# Recombinant Human Smad1 protein ab84653

[2 Images](#)

### Description

<b>Product name</b>	Recombinant Human Smad1 protein
<b>Purity</b>	> 85 % Densitometry.
<b>Expression system</b>	Escherichia coli
<b>Protein length</b>	Full length protein
<b>Animal free</b>	No
<b>Nature</b>	Recombinant
<b>Species</b>	Human

### Specifications

Our **Abpromise guarantee** covers the use of **ab84653** in the following tested applications.

The application notes include recommended starting dilutions; optimal dilutions/concentrations should be determined by the end user.

<b>Applications</b>	Western blot SDS-PAGE
<b>Form</b>	Liquid

### Preparation and Storage

<b>Stability and Storage</b>	Shipped on dry ice. Upon delivery aliquot and store at -80°C. Avoid freeze / thaw cycles. pH: 7.50 Constituents: 0.00174% PMSF, 0.00385% DTT, 0.79% Tris HCl, 25% Glycerol (glycerin, glycerine), 0.87% Sodium chloride
------------------------------	---

### General Info

<b>Function</b>	Transcriptional modulator activated by BMP (bone morphogenetic proteins) type 1 receptor kinase. SMAD1 is a receptor-regulated SMAD (R-SMAD). SMAD1/OAZ1/PSMB4 complex mediates the degradation of the CREBBP/EP300 repressor SNIP1.
<b>Tissue specificity</b>	Ubiquitous. Highest expression seen in the heart and skeletal muscle.

### Sequence similarities

Belongs to the dwarfin/SMAD family.  
Contains 1 MH1 (MAD homology 1) domain.  
Contains 1 MH2 (MAD homology 2) domain.

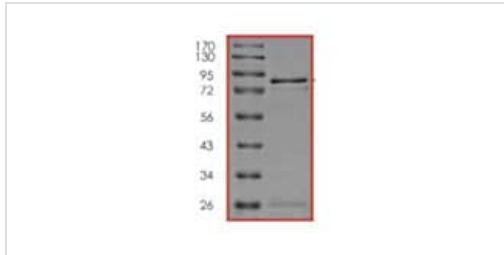
### Post-translational modifications

Phosphorylated on serine by BMP type 1 receptor kinase.  
Ubiquitin-mediated proteolysis by SMAD-specific E3 ubiquitin ligase SMURF1.

### Cellular localization

Cytoplasm. Nucleus. Cytoplasmic in the absence of ligand. Migrates to the nucleus when complexed with SMAD4. Co-localizes with LEMD3 at the nucleus inner membrane.

## Images



SDS-PAGE - Recombinant Human Smad1 protein  
(ab84653)

SDS-PAGE showing ab84653 at approximately 83kDa.



Western blot - Recombinant Human Smad1 protein  
(ab84653)

Ab46688 recognizes the tagged recombinant Smad1 protein  
(ab84653) which has an expected molecular weight of 83 kDa.

**Please note:** All products are "FOR RESEARCH USE ONLY. NOT FOR USE IN DIAGNOSTIC PROCEDURES"

## Our Abpromise to you: Quality guaranteed and expert technical support

- Replacement or refund for products not performing as stated on the datasheet
- Valid for 12 months from date of delivery
- Response to your inquiry within 24 hours
- We provide support in Chinese, English, French, German, Japanese and Spanish

- Extensive multi-media technical resources to help you
- We investigate all quality concerns to ensure our products perform to the highest standards

If the product does not perform as described on this datasheet, we will offer a refund or replacement. For full details of the Abpromise, please visit <https://www.abcam.com/abpromise> or contact our technical team.

#### **Terms and conditions**

---

- Guarantee only valid for products bought direct from Abcam or one of our authorized distributors