

## Product datasheet

# Recombinant Human SNRPA1 protein ab116200

1 Image

### Description

<b>Product name</b>	Recombinant Human SNRPA1 protein	
<b>Purity</b>	> 80 % SDS-PAGE. ab116200 was purified using conventional chromatography.	
<b>Expression system</b>	Escherichia coli	
<b>Accession</b>	<b><u>P09661</u></b>	
<b>Protein length</b>	Full length protein	
<b>Animal free</b>	No	
<b>Nature</b>	Recombinant	
<b>Species</b>	Human	
<b>Sequence</b>	MGSSHHHHHHSSGLVPRGSHMVKLTAEIEQAAQYTNNAV RDRELDLRGYK IPVIENLGATLDQFDAIDFSDNEIRKLDGFLLRRLKTLVN NNRICRIG EGLDQALPCLTELILTNNLVELGDLDPPLASLKSILR NPVTNKKH YRLVYKVPQVRVLDVDFQKVKLKERQAEKMFKGKGAQL AKDIARRSKT FNPAGLPTDKKGGPSPGDVEAIKNAIANASTLAEVERL KLLQSQGIP GRERRSGPTDDGEEEMEEDTVTNGS	
<b>Predicted molecular weight</b>	31 kDa including tags	
<b>Amino acids</b>	1 to 255	
<b>Tags</b>	His tag N-Terminus	

### Specifications

Our **Abpromise guarantee** covers the use of **ab116200** in the following tested applications.

The application notes include recommended starting dilutions; optimal dilutions/concentrations should be determined by the end user.

<b>Applications</b>	Mass Spectrometry SDS-PAGE
<b>Mass spectrometry</b>	MALDI-TOF
<b>Form</b>	Liquid

## Preparation and Storage

---

<b>Stability and Storage</b>	Shipped at 4°C. Store at +4°C short term (1-2 weeks). Upon delivery aliquot. Store at -20°C or -80°C. Avoid freeze / thaw cycle.  pH: 8.00 Constituents: 0.002% PMSF, 0.03% DTT, 0.32% Tris HCl, 30% Glycerol (glycerin, glycerine), 1.17% Sodium chloride
------------------------------	---------------------------------------------------------------------------------------------------------------------------------------------------------------------------------------------------------------------------------------------------------------------

## General Info

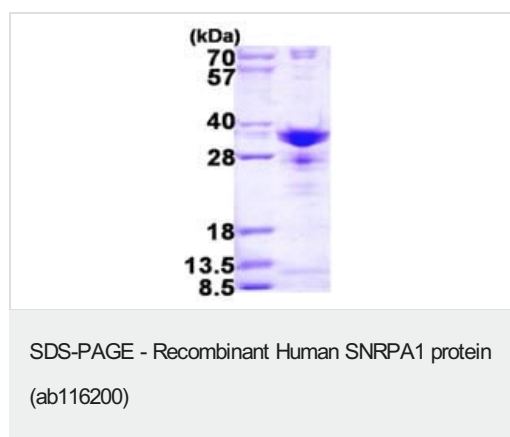
---

<b>Function</b>	This protein is associated with sn-RNP U2. It helps the A' protein to bind stem loop IV of U2 snRNA.
<b>Sequence similarities</b>	Belongs to the U2 small nuclear ribonucleoprotein A family. Contains 4 LRR (leucine-rich) repeats. Contains 1 LRRCT domain.
<b>Cellular localization</b>	Nucleus.

---

## Images

---



15% SDS-PAGE analysis of 3 µg ab116200.

**Please note:** All products are "FOR RESEARCH USE ONLY. NOT FOR USE IN DIAGNOSTIC PROCEDURES"

## Our Abpromise to you: Quality guaranteed and expert technical support

---

- Replacement or refund for products not performing as stated on the datasheet
- Valid for 12 months from date of delivery
- Response to your inquiry within 24 hours
- We provide support in Chinese, English, French, German, Japanese and Spanish
- Extensive multi-media technical resources to help you
- We investigate all quality concerns to ensure our products perform to the highest standards

If the product does not perform as described on this datasheet, we will offer a refund or replacement. For full details of the Abpromise, please visit <https://www.abcam.com/abpromise> or contact our technical team.

## Terms and conditions

---

- Guarantee only valid for products bought direct from Abcam or one of our authorized distributors