

Recombinant Human SPAM1 protein ab132258

1 References 1 Image

Description

Product name	Recombinant Human SPAM1 protein		
Expression system	Wheat germ		
Accession	<u>P38567</u>		
Protein length	Full length protein		
Animal free	No		
Nature	Recombinant		
Species	Human		
Sequence	MGVLKFKHIFRSFVKSSGVSQIVFTLLIPCCLTLNFRAPP VIPNV PFL WAWNAPSEFCLGKFDEPLDMSLFSFIGSPRINATGQGVTI FYVDRLGYYP YDSITGVTVNGGIPQKISLQDHLDKAKKDITFYMPVDNLGM AVIDWEEW RPTWARNWKPKDVYKNRSIELVQQQNVQLSLTEATEKAK QEFEKAGKDFL VETIKLGKLLRPNHLWGYYLFPDCYNHHYKKPGYNGSCFN VEIKRND DLS WLWNESTALYPSI LNTQQSPVAATLYVRNRVREAIRVSKI PDAKSPLPV FAYTRIMFTDQVLKFLSQDELVYTFGETVALGASGMWGT L SIMRSMKS CLLLDNYMETILNPYI I NVTLAAKMCSQVLCQEQQGVCIRKN WNSSDYLHL NPDNFAIQLEKGGKFTVRGKPTLEDLEQFSEKFYCSCYST LSCKEKADV K DTDAVDVCIADGVCIDAFLKPPMETEEPQIFYNASPSTLSA TMFIVSILF LISSVASL		
Predicted molecular weight	84 kDa		
Amino acids	1 to 509		

Specifications

Our **Abpromise guarantee** covers the use of **ab132258** in the following tested applications.

The application notes include recommended starting dilutions; optimal dilutions/concentrations should be determined by the end user.

Applications	Western blot
	ELISA
	SDS-PAGE
Form	Liquid
Additional notes	This product was previously labelled as Hyaluronidase PH20.

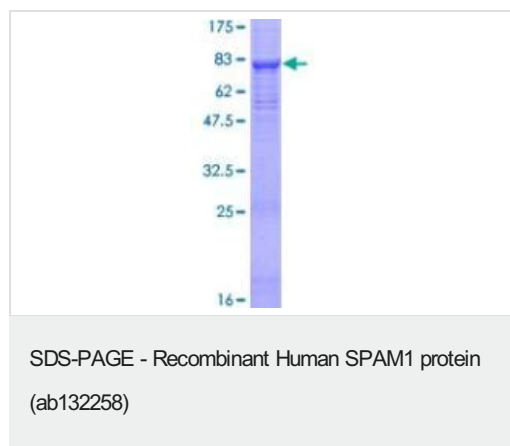
Preparation and Storage

Stability and Storage	Shipped on dry ice. Upon delivery aliquot and store at -80°C. Avoid freeze / thaw cycles.
	pH: 8.00
	Constituents: 0.31% Glutathione, 0.79% Tris HCl

General Info

Function	Involved in sperm-egg adhesion. Upon fertilization sperm must first penetrate a layer of cumulus cells that surrounds the egg before reaching the zona pellucida. The cumulus cells are embedded in a matrix containing hyaluronic acid which is formed prior to ovulation. This protein aids in penetrating the layer of cumulus cells by digesting hyaluronic acid.
Tissue specificity	Testis.
Sequence similarities	Belongs to the glycosyl hydrolase 56 family.
Post-translational modifications	N-glycosylated.
Cellular localization	Cell membrane.

Images



12.5% SDS-PAGE analysis of ab132258 stained with Coomassie Blue.

Please note: All products are "FOR RESEARCH USE ONLY. NOT FOR USE IN DIAGNOSTIC PROCEDURES"

Our Abpromise to you: Quality guaranteed and expert technical support

- Replacement or refund for products not performing as stated on the datasheet
- Valid for 12 months from date of delivery
- Response to your inquiry within 24 hours

- We provide support in Chinese, English, French, German, Japanese and Spanish
- Extensive multi-media technical resources to help you
- We investigate all quality concerns to ensure our products perform to the highest standards

If the product does not perform as described on this datasheet, we will offer a refund or replacement. For full details of the Abpromise, please visit <https://www.abcam.com/abpromise> or contact our technical team.

Terms and conditions

- Guarantee only valid for products bought direct from Abcam or one of our authorized distributors