

## Product datasheet

# Recombinant Human sPLA2-X protein (His tag) ab63847

[1 Image](#)

### Description

<b>Product name</b>	Recombinant Human sPLA2-X protein (His tag)
<b>Purity</b>	> 95 % SDS-PAGE.
<b>Expression system</b>	Escherichia coli
<b>Accession</b>	<u><b>O15496</b></u>
<b>Protein length</b>	Full length protein
<b>Animal free</b>	No
<b>Nature</b>	Recombinant
<b>Species</b>	Human
<b>Sequence</b>	MRGSHHHHHHGMASHMGILELAGTVGCVGPRTPIAYMKY GCFCGLGGHGQ PRDAIDWCCHGHDCCYTRAEAGCSPKTERYSWQCVNQ SVLCGPAENKCQ ELLCKCDQEIANCLAQTEYNLKYLFYPQFLCEPDSPKCD
<b>Predicted molecular weight</b>	16 kDa including tags
<b>Amino acids</b>	43 to 165
<b>Tags</b>	His tag N-Terminus
<b>Additional sequence information</b>	Mature chain without signal peptide, without propeptide.

### Specifications

Our **Abpromise guarantee** covers the use of **ab63847** in the following tested applications.

The application notes include recommended starting dilutions; optimal dilutions/concentrations should be determined by the end user.

<b>Applications</b>	Western blot
<b>Form</b>	Lyophilized
<b>Additional notes</b>	Product is NOT sterile! Please filter the product by an appropriate sterile filter before using it in cell culture. This product was previously labelled as Phospholipase A2 X

## Preparation and Storage

### Stability and Storage

Shipped at 4°C. Upon delivery aliquot. Store at -80°C. Avoid freeze / thaw cycle.

Constituent: 0.121% Tris

### Reconstitution

Add deionized water to prepare a working stock solution of approximately 0.5 mg/ml and let the lyophilized pellet dissolve completely.

## General Info

### Function

PA2 catalyzes the calcium-dependent hydrolysis of the 2-acyl groups in 3-sn-phosphoglycerides. Has a powerful potency for releasing arachidonic acid from cell membrane phospholipids. Prefers phosphatidylethanolamine and phosphatidylcholine liposomes to those of phosphatidylserine.

### Tissue specificity

Found in spleen, thymus, peripheral blood leukocytes, pancreas, lung, and colon.

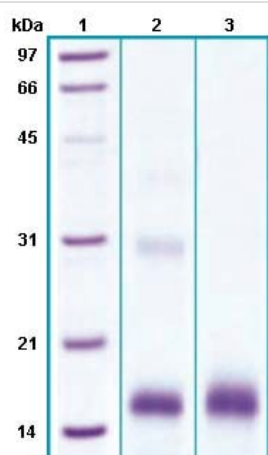
### Sequence similarities

Belongs to the phospholipase A2 family.

### Cellular localization

Secreted.

## Images



12% SDS-PAGE separation of ab63847. Molecular Weight: ~15.5 kDa.

Lane 1. Molecular weight marker

Lane 2. reduced and heated sample, 5µg/lane

Lane 3. non-reduced and non-heated sample, 5µg/lane

SDS-PAGE - Recombinant Human sPLA2-X protein  
(His tag) (ab63847)

**Please note:** All products are "FOR RESEARCH USE ONLY. NOT FOR USE IN DIAGNOSTIC PROCEDURES"

## Our Abpromise to you: Quality guaranteed and expert technical support

- Replacement or refund for products not performing as stated on the datasheet
- Valid for 12 months from date of delivery
- Response to your inquiry within 24 hours
- We provide support in Chinese, English, French, German, Japanese and Spanish
- Extensive multi-media technical resources to help you

- We investigate all quality concerns to ensure our products perform to the highest standards

If the product does not perform as described on this datasheet, we will offer a refund or replacement. For full details of the Abpromise, please visit <https://www.abcam.com/abpromise> or contact our technical team.

### **Terms and conditions**

---

- Guarantee only valid for products bought direct from Abcam or one of our authorized distributors