

Product datasheet

Recombinant Human SPP protein ab153530

[1 Image](#)

Description

Product name	Recombinant Human SPP protein
Expression system	Wheat germ
Protein length	Full length protein
Animal free	No
Nature	Recombinant
Species	Human
Sequence	MDSALSDPHNGSAEAGGPTNSTTRPPSTPEGIALAYGSL LMALLPIFFG ALRSVRCARGKNASDMPETITSRDAARFPIASCTLLGLYL FFKIFSQEY INLLLSMYFFVLGILALSHTIRSEGISLQHLKQLSREPVGGLG
Amino acids	1 to 143
Tags	GST tag N-Terminus

Specifications

Our **Abpromise guarantee** covers the use of **ab153530** in the following tested applications.

The application notes include recommended starting dilutions; optimal dilutions/concentrations should be determined by the end user.

Applications	ELISA Western blot
Form	Liquid
Additional notes	This product was previously labelled as Signal Peptide Peptidase.

Preparation and Storage

Stability and Storage	Shipped on dry ice. Upon delivery aliquot and store at -80°C. Avoid freeze / thaw cycles. pH: 8.00 Constituents: 0.31% Glutathione, 0.79% Tris HCl
------------------------------	--

General Info

Function

Catalyzes intramembrane proteolysis of some signal peptides after they have been cleaved from a preprotein, resulting in the release of the fragment from the ER membrane into the cytoplasm. Required to generate lymphocyte cell surface (HLA-E) epitopes derived from MHC class I signal peptides. May play a role in graft rejection (By similarity). May be necessary for the removal of the signal peptide that remains attached to the hepatitis C virus core protein after the initial proteolytic processing of the polyprotein. Involved in the intramembrane cleavage of the integral membrane protein PSEN1.

Tissue specificity

Widely expressed with highest levels in kidney, liver, placenta, lung, leukocytes and small intestine and reduced expression in heart and skeletal muscle. Expressed abundantly in the CNS with highest levels in thalamus and medulla.

Sequence similarities

Belongs to the peptidase A22B family.

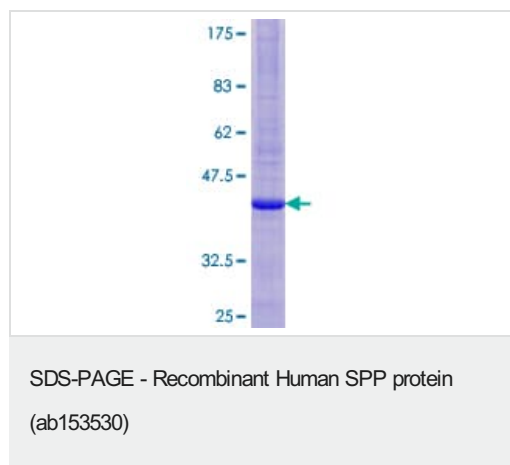
Post-translational modifications

N-glycosylated.

Cellular localization

Cell membrane and Endoplasmic reticulum membrane.

Images



ab153530 on a 12.5% SDS-PAGE stained with Coomassie Blue.

Please note: All products are "FOR RESEARCH USE ONLY. NOT FOR USE IN DIAGNOSTIC PROCEDURES"

Our Abpromise to you: Quality guaranteed and expert technical support

- Replacement or refund for products not performing as stated on the datasheet
- Valid for 12 months from date of delivery
- Response to your inquiry within 24 hours
- We provide support in Chinese, English, French, German, Japanese and Spanish
- Extensive multi-media technical resources to help you
- We investigate all quality concerns to ensure our products perform to the highest standards

If the product does not perform as described on this datasheet, we will offer a refund or replacement. For full details of the Abpromise, please visit <https://www.abcam.com/abpromise> or contact our technical team.

Terms and conditions

- Guarantee only valid for products bought direct from Abcam or one of our authorized distributors