

## Product datasheet

# Recombinant Human Sprouty 4/Spry-4 protein (denatured) ab171684

1 Image

### Description

<b>Product name</b>	Recombinant Human Sprouty 4/Spry-4 protein (denatured)		
<b>Purity</b>	> 85 % SDS-PAGE.		
<b>Expression system</b>	Escherichia coli		
<b>Accession</b>	<b><u>Q9C004</u></b>		
<b>Protein length</b>	Full length protein		
<b>Animal free</b>	No		
<b>Nature</b>	Recombinant		
<b>Species</b>	Human		
<b>Sequence</b>	MGSSHHHHHH SSGLVPRGSH MGSMEPPIPQ SAPLTPNSVM VQPLLSRMS HSRLQHPLTI LPIDQVKTSV VENVYIDNPS LALTGPKRT RGAPELAPT PARCDQDVTH HWISFSGRPS SVSSSSSTSS DQRLLDHMAP PPVADQASPR AVRIQPKVVH CQPLDLKGPA VPPELDKHFL LCEACGKCKC KECASPRTP SCWVCNQECL CSAQTLVNYG TCMCLVQGIF YHCTNEDDEG SCADHPCSCS RSNCCARWSF MGALSVVLPC LLCYLPATGC VKLAQRGYDR LRRPGCRCKH TNSVICKAAS GDAKTSRPDK PF		
<b>Predicted molecular weight</b>	35 kDa including tags		
<b>Amino acids</b>	1 to 299		
<b>Tags</b>	His tag N-Terminus		

### Specifications

Our **Abpromise guarantee** covers the use of **ab171684** in the following tested applications.

The application notes include recommended starting dilutions; optimal dilutions/concentrations should be determined by the end user.

<b>Applications</b>	SDS-PAGE
<b>Form</b>	Liquid

**Additional notes**

Previously labelled as Sprouty 4.

**Preparation and Storage****Stability and Storage**

Shipped at 4°C. Store at +4°C short term (1-2 weeks). Upon delivery aliquot. Store at -20°C or -80°C. Avoid freeze / thaw cycle.

pH: 8.00

Constituents: 2.4% Urea, 0.32% Tris HCl, 10% Glycerol (glycerin, glycerine)

**General Info****Function**

Suppresses the insulin receptor and EGFR-transduced MAPK signaling pathway, but does not inhibit MAPK activation by a constitutively active mutant Ras. Probably impairs the formation of GTP-Ras.

**Sequence similarities**

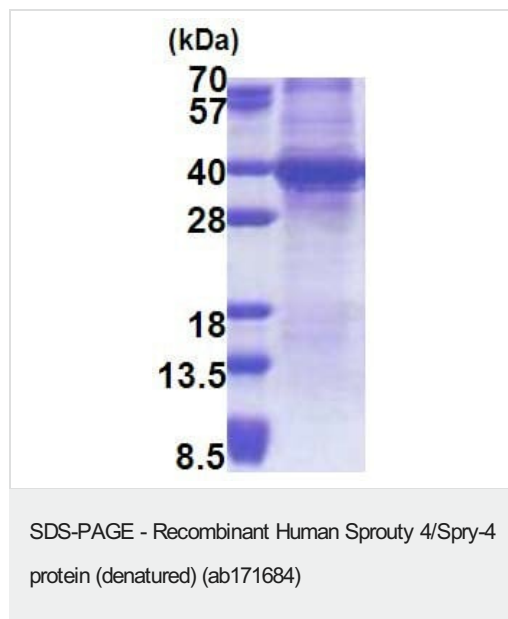
Belongs to the sprouty family.  
Contains 1 SPR (sprouty) domain.

**Domain**

The Cys-rich domain is responsible for the localization of the protein to the membrane ruffles.

**Cellular localization**

Cytoplasm. Cell projection > ruffle membrane.

**Images**

15% SDS-PAGE analysis of ab171684 (3µg).

**Please note:** All products are "FOR RESEARCH USE ONLY. NOT FOR USE IN DIAGNOSTIC PROCEDURES"

**Our Abpromise to you: Quality guaranteed and expert technical support**

- Replacement or refund for products not performing as stated on the datasheet
- Valid for 12 months from date of delivery
- Response to your inquiry within 24 hours

- We provide support in Chinese, English, French, German, Japanese and Spanish
- Extensive multi-media technical resources to help you
- We investigate all quality concerns to ensure our products perform to the highest standards

If the product does not perform as described on this datasheet, we will offer a refund or replacement. For full details of the Abpromise, please visit <https://www.abcam.com/abpromise> or contact our technical team.

#### **Terms and conditions**

---

- Guarantee only valid for products bought direct from Abcam or one of our authorized distributors