

## Product datasheet

# Recombinant human ST2 protein (Active) ab233601

[1 References](#) [1 Image](#)

### Description

<b>Product name</b>	Recombinant human ST2 protein (Active)	
<b>Biological activity</b>	Measured by its ability to inhibit proliferation using D10.G4.1 mouse helper T cells. The ED <sub>50</sub> for this effect is less or equal to 10 ng/ml with IL-33.	
<b>Purity</b>	> 95 % SDS-PAGE. Affinity purified	
<b>Endotoxin level</b>	< 1.000 Eu/μg	
<b>Expression system</b>	Baculovirus infected insect cells	
<b>Accession</b>	<b><u>Q01638</u></b>	
<b>Protein length</b>	Protein fragment	
<b>Animal free</b>	No	
<b>Nature</b>	Recombinant	
<b>Species</b>	Human	
<b>Sequence</b>	KFSKQSWGLENEALMRCPRQGKPSYTDWYYSQTNKSIP TQERNRVFAS GQLLKFLPAAVADSGIYTCMRSPTFNRTGYANVTYKKQSD CNVPDYLM YSTVSGSEKNSKIYCPTIDLYNWTAPLEWFKNCQALQGSR YRAHKSFLVI DNVMTEDAGDYTKCFIHNENGANYSVTATRSFTVKDEQG FSLFPVIGAPA QNEIKEVEIGKNANLTCSACFGKGTQFLAAVLWQLNGTKIT DFGEPRIQQ EEGQNQSFNSGLACLDMVLRADVKEEDLLLQYDCLALNL HGLRRHTVRL SRKNPIDHHSLEHHHHHH	
<b>Predicted molecular weight</b>	36 kDa including tags	
<b>Amino acids</b>	19 to 328	
<b>Tags</b>	His tag C-Terminus	
<b>Additional sequence information</b>	Extracellular domain (NP_057316).	

### Specifications

Our **Abpromise guarantee** covers the use of **ab233601** in the following tested applications.

The application notes include recommended starting dilutions; optimal dilutions/concentrations should be determined by the end user.

**Applications** Functional Studies

SDS-PAGE

**Form** Liquid

## Preparation and Storage

**Stability and Storage** Shipped at 4°C. Store at +4°C short term (1-2 weeks). Upon delivery aliquot. Store at -20°C or -80°C. Avoid freeze / thaw cycle.

pH: 7.40

Constituents: PBS, 10% Glycerol (glycerin, glycerine)

This product is an active protein and may elicit a biological response in vivo, handle with caution.

## General Info

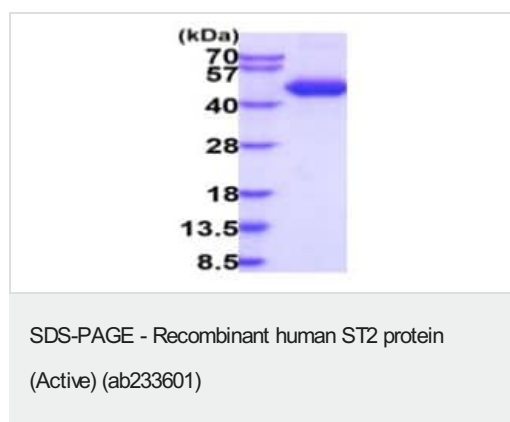
**Function** Receptor for interleukin-33 (IL-33), its stimulation recruits MYD88, IRAK1, IRAK4, and TRAF6, followed by phosphorylation of MAPK3/ERK1 and/or MAPK1/ERK2, MAPK14, and MAPK8. Possibly involved in helper T-cell function.

**Tissue specificity** Highly expressed in kidney, lung, placenta, stomach, skeletal muscle, colon and small intestine. Isoform A is prevalently expressed in the lung, testis, placenta, stomach and colon. Isoform B is more abundant in the brain, kidney and the liver. Isoform C is not detected in brain, heart, liver, kidney and skeletal muscle.

**Sequence similarities** Belongs to the interleukin-1 receptor family.  
Contains 3 Ig-like C2-type (immunoglobulin-like) domains.  
Contains 1 TIR domain.

**Cellular localization** Secreted and Cell membrane.

## Images



15% SDS-PAGE analysis of 3 µg ab233601.

MW: 40-57 kDa (SDS-PAGE under reducing conditions).

**Please note:** All products are "FOR RESEARCH USE ONLY. NOT FOR USE IN DIAGNOSTIC PROCEDURES"

## **Our Abpromise to you: Quality guaranteed and expert technical support**

---

- Replacement or refund for products not performing as stated on the datasheet
- Valid for 12 months from date of delivery
- Response to your inquiry within 24 hours
  
- We provide support in Chinese, English, French, German, Japanese and Spanish
- Extensive multi-media technical resources to help you
- We investigate all quality concerns to ensure our products perform to the highest standards

If the product does not perform as described on this datasheet, we will offer a refund or replacement. For full details of the Abpromise, please visit <https://www.abcam.com/abpromise> or contact our technical team.

## **Terms and conditions**

---

- Guarantee only valid for products bought direct from Abcam or one of our authorized distributors