

# Recombinant human ST2 protein (Fc Chimera Active) ab219662

[1 References](#)   [2 Images](#)

Description	
Product name	Recombinant human ST2 protein (Fc Chimera Active)
Biological activity	Immobilized Human IL-33, Tag Free at 5 µg/mL (100 µL/well) can bind ab219662 with a linear range of 1.95-7.8 ng/mL.
Purity	> 90 % SDS-PAGE.
Endotoxin level	< 1.000 Eu/µg
Expression system	HEK 293 cells
Accession	<b><u>Q01638</u></b>
Protein length	Protein fragment
Animal free	No
Nature	Recombinant
Species	Human
Sequence	KFSKQSWGLENEALVRCPRQGKPSYTDWYYSQTNKSIP TQERNRVFAS GQLLKFLPAAVADSGIYTCVRSPTFNRTGYANVTIYKKQSD CNVPDYLM YSTVSGSEKNSKIYCPTIDLYNWTAPLEWFKNCQALQGSR YRAHKSFLVI DNVMTEDAGDYTCKFIHNENGANYSVTATRSFTVKDEQG FSLFPVIGAPA QNEIKEVEIGKNANLTCSACFGKGTQFLAAVLWQLNGTKIT DFGEPRIQQ EEGQNQSFSNGLACLDMLRIADVKEEDLLLQYDCLALNL HGLRRHTVRL SRKNP
Predicted molecular weight	61 kDa including tags
Amino acids	19 to 323
Additional sequence information	Extracellular domain with Human IgG1 Fc tag at the C-terminus.

Specifications

Our **Abpromise guarantee** covers the use of **ab219662** in the following tested applications.

The application notes include recommended starting dilutions; optimal dilutions/concentrations should be determined by the end user.

<b>Applications</b>	SDS-PAGE
	Functional Studies
<b>Form</b>	Lyophilized

---

## Preparation and Storage

<b>Stability and Storage</b>	Shipped at 4°C. Upon delivery aliquot. Store at -20°C long term. For long term storage it is recommended to add a carrier protein on reconstitution (0.1% HSA or BSA).
	pH: 7.4
	Constituents: 5% Trehalose, 0.61% Tris, 0.75% Glycine, Sodium chloride, L-Arginine
	This product is an active protein and may elicit a biological response in vivo, handle with caution.
<b>Reconstitution</b>	Reconstitute with sterile deionized water to a concentration of 200 µg/ml.

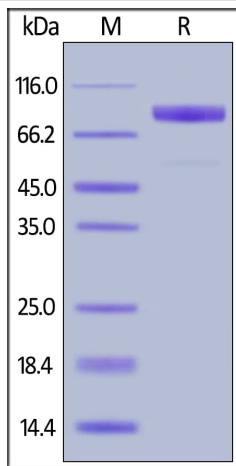
---

## General Info

<b>Function</b>	Receptor for interleukin-33 (IL-33), its stimulation recruits MYD88, IRAK1, IRAK4, and TRAF6, followed by phosphorylation of MAPK3/ERK1 and/or MAPK1/ERK2, MAPK14, and MAPK8. Possibly involved in helper T-cell function.
<b>Tissue specificity</b>	Highly expressed in kidney, lung, placenta, stomach, skeletal muscle, colon and small intestine. Isoform A is prevalently expressed in the lung, testis, placenta, stomach and colon. Isoform B is more abundant in the brain, kidney and the liver. Isoform C is not detected in brain, heart, liver, kidney and skeletal muscle.
<b>Sequence similarities</b>	Belongs to the interleukin-1 receptor family. Contains 3 Ig-like C2-type (immunoglobulin-like) domains. Contains 1 TIR domain.
<b>Cellular localization</b>	Secreted and Cell membrane.

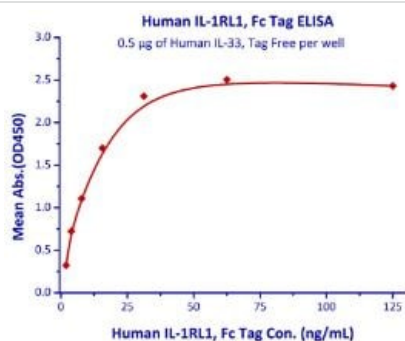
---

## Images



SDS-PAGE using ab219662. Migrates at 85-100 kDa under reducing conditions due to glycosylation.

SDS-PAGE - Recombinant human ST2 protein (Fc Chimera Active) (ab219662)



Immobilized Human IL-33, Tag Free at 5 µg/mL (100 µL/well) can bind ab219662 with a linear range of 1.95-7.8 ng/mL.

Functional Studies - Recombinant human ST2 protein (Fc Chimera Active) (ab219662)

**Please note:** All products are "FOR RESEARCH USE ONLY. NOT FOR USE IN DIAGNOSTIC PROCEDURES"

## Our Abpromise to you: Quality guaranteed and expert technical support

- Replacement or refund for products not performing as stated on the datasheet
- Valid for 12 months from date of delivery
- Response to your inquiry within 24 hours
- We provide support in Chinese, English, French, German, Japanese and Spanish
- Extensive multi-media technical resources to help you
- We investigate all quality concerns to ensure our products perform to the highest standards

If the product does not perform as described on this datasheet, we will offer a refund or replacement. For full details of the Abpromise, please visit <https://www.abcam.com/abpromise> or contact our technical team.

## Terms and conditions

- Guarantee only valid for products bought direct from Abcam or one of our authorized distributors