

Recombinant Human STBD1 protein ab167849

1 Image

Description

Product name	Recombinant Human STBD1 protein
Purity	> 90 % SDS-PAGE. ab167849 was purified using conventional chromatography techniques.
Expression system	Escherichia coli
Accession	<u>O95210</u>
Protein length	Protein fragment
Animal free	No
Nature	Recombinant
Species	Human
Sequence	MGSSHHHHHHSSGLVPRGSHMGSRGGPGDTGKDGD AEQEKDAPLGGAIPGGHQSGSSGLSPGPSGQELVTKPEHLQESNGHLISKTKDLGKLQAASWRLQNPSREVC DNSREHVP SGQFPDTEAPATSETSNSRSYS EVS RNESLESPMGEWGFQKGQEISAKAATCFAEKL PSSNLLKNRAKEEMSLSDLNSQDRVDH EEWEMVPRHSSWGDVG VGGSLKAPVLN LNQGMDNGRSTLVEARGQQVHGKMERVAVMPAGSQQVSVRFQVHYVTSTDVQFIAVTGDHECLGRWNTYIPLHYNKDGFW SHSIFLPADTVVEWKFVLV ENG GVTRWEECSNR FLETGHEDKV VHAWWGIH
Predicted molecular weight	39 kDa including tags
Amino acids	24 to 358
Tags	His tag N-Terminus

Specifications

Our **Abpromise guarantee** covers the use of **ab167849** in the following tested applications.

The application notes include recommended starting dilutions; optimal dilutions/concentrations should be determined by the end user.

Applications	SDS-PAGE
--------------	----------

	Mass Spectrometry
Mass spectrometry	MALDI-TOF
Form	Liquid
Additional notes	Previously labelled as Genethonin 1.

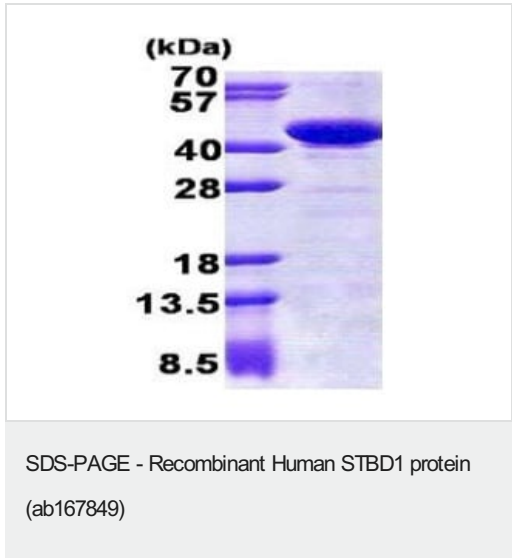
Preparation and Storage

Stability and Storage	<p>Shipped at 4°C. Store at +4°C short term (1-2 weeks). Upon delivery aliquot. Store at -20°C or -80°C. Avoid freeze / thaw cycle.</p> <p>pH: 8.00</p> <p>Constituents: 0.02% DTT, 0.32% Tris HCl, 10% Glycerol (glycerin, glycerine), 0.88% Sodium chloride</p>
------------------------------	---

General Info

Function	May have the capability to bind to carbohydrates.
Tissue specificity	Expressed at high level in skeletal and cardiac muscles. Moderately expressed in liver and placenta. No expression is found in pancreas, kidney or lung. Present in skeletal muscle, heart and placenta (at protein level).
Sequence similarities	Contains 1 CBM20 (carbohydrate binding type-20) domain.
Cellular localization	Membrane. Distributed in the transverse tubules and/or near the junctional sarcoplasmic reticulum.

Images



15% SDS-PAGE analysis of 3µg ab167849.

Please note: All products are "FOR RESEARCH USE ONLY. NOT FOR USE IN DIAGNOSTIC PROCEDURES"

Our Abpromise to you: Quality guaranteed and expert technical support

- Replacement or refund for products not performing as stated on the datasheet
- Valid for 12 months from date of delivery
- Response to your inquiry within 24 hours
- We provide support in Chinese, English, French, German, Japanese and Spanish
- Extensive multi-media technical resources to help you
- We investigate all quality concerns to ensure our products perform to the highest standards

If the product does not perform as described on this datasheet, we will offer a refund or replacement. For full details of the Abpromise, please visit <https://www.abcam.com/abpromise> or contact our technical team.

Terms and conditions

- Guarantee only valid for products bought direct from Abcam or one of our authorized distributors