

## Product datasheet

# Recombinant human STK19/G11 protein ab139624

2 Images

### Description

<b>Product name</b>	Recombinant human STK19/G11 protein	
<b>Biological activity</b>	The specific activity of ab139624 was determined to be 2 nmol/min/mg.	
<b>Purity</b>	> 70 % Densitometry. Affinity purified.	
<b>Expression system</b>	Baculovirus infected Sf9 cells	
<b>Accession</b>	<b><u>P49842-2</u></b>	
<b>Protein length</b>	Full length protein	
<b>Animal free</b>	No	
<b>Nature</b>	Recombinant	
<b>Species</b>	Human	
<b>Sequence</b>	MQKWFSAFDDAIQRQWRANPSRGGGGVSFTKEVDTNV ATGAPRRRQVRP GRACPWREPIRGRRGARPGGGDAGGTPGETVRHCSAPE DPIFRFSSLHSY PFPGTIKSRDMSWKRHHLIPETFGVKRRRKRGPVESDPLR GEPGSARAAV SELMQLFPRGLFEDALPPMLRSQVYSLVPDRTVADRQLK ELQEQGEIRI VQLGFDLDAHGIIFTEDYRTRVLKACDGRPYAGAVQKFLA SVLPACGDLS FQQDQMTQTFGFRDSEITHLVNAGVLTVRDAGSWWLAVP GAGRFIKYFVK GRQAVLSMVRKAKYRELLSELLGRRAPVVVRLGLTYHVH DLIGAQLVDC ISTTSGTLLRLPET	
<b>Predicted molecular weight</b>	70 kDa including tags	
<b>Amino acids</b>	1 to 364	

### Specifications

Our **Abpromise guarantee** covers the use of **ab139624** in the following tested applications.

The application notes include recommended starting dilutions; optimal dilutions/concentrations should be determined by the end user.

**Applications** Western blot

Functional Studies

SDS-PAGE

**Form** Liquid

**Additional notes** **ab204856** (CREB peptide) can be utilized as a substrate for assessing kinase activity  
Previously labelled as STK19.

### Preparation and Storage

---

**Stability and Storage** Shipped on dry ice. Upon delivery aliquot and store at -80°C. Avoid freeze / thaw cycles.  
pH: 7.50  
Constituents: 0.31% Glutathione, 0.002% PMSF, 0.004% DTT, 0.79% Tris HCl, 0.003% EDTA, 25% Glycerol (glycerin, glycerine), 0.88% Sodium chloride  
This product is an active protein and may elicit a biological response in vivo, handle with caution.

### General Info

---

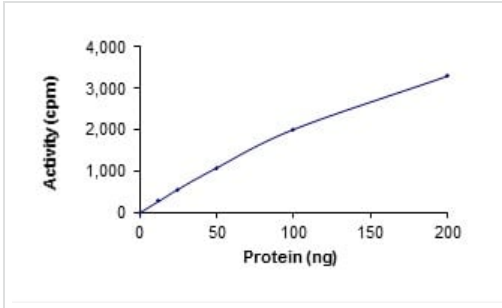
**Relevance** STK19 belongs to the serine/threonine protein kinase family. The specific function of this protein is unknown. In vitro it can phosphorylate casein-alpha on serine and threonine residues and histones on serine residues.

**Cellular localization** Nuclear

### Images

---





The specific activity of STK19/G11 (ab139624) was determined to be 1.7 nmol /min/mg as per activity assay protocol.

Functional Studies - Recombinant human  
STK19/G11 protein (ab139624)

**Please note:** All products are "FOR RESEARCH USE ONLY. NOT FOR USE IN DIAGNOSTIC PROCEDURES"

### Our Abpromise to you: Quality guaranteed and expert technical support

---

- Replacement or refund for products not performing as stated on the datasheet
- Valid for 12 months from date of delivery
- Response to your inquiry within 24 hours
- We provide support in Chinese, English, French, German, Japanese and Spanish
- Extensive multi-media technical resources to help you
- We investigate all quality concerns to ensure our products perform to the highest standards

If the product does not perform as described on this datasheet, we will offer a refund or replacement. For full details of the Abpromise, please visit <https://www.abcam.com/abpromise> or contact our technical team.

### Terms and conditions

---

- Guarantee only valid for products bought direct from Abcam or one of our authorized distributors