

Recombinant human STK36 protein ab139615

[4 Images](#)

Description

Product name	Recombinant human STK36 protein
Biological activity	The specific activity of ab139615 was determined to be 0.6 nmol/min/mg.
Purity	> 80 % Densitometry. Affinity purified.
Expression system	Baculovirus infected Sf9 cells
Accession	<u>Q9NRP7</u>
Protein length	Protein fragment
Animal free	No
Nature	Recombinant
Species	Human
Sequence	MEKYHVLEMI GEGSFGRVYK GRRKYSAQVV ALKFIPKLGR SEKELRNLQR EIEIMRGLRH PNIVHMLDSF ETDKEVVVVVT DYAEGELFQI LEDDGKLPED QVQAIAAQLV SALYYLHSHR ILHRDMKPQN ILLAKGGGIK LCDFGFARAM STNTMVLTSI KGTPLYMSPE LVEERPVDHT ADLWSVGCIL YELAVGTPPF YATSIFQLVS LILKDPVRWP STISPCFKNF LQGLLT KDPR QRLSWPDLLY HPFIAGHVTI ITEPAGPD LG TPFTSRLPPE LQVLKDEQAH RLAPKGNQSR ILTQAYKRMA EEAMQKKHQ N TGPAL EQEDK TSKVAPGTAP LPRLGATPQE SLLAGILAS ELKSSWAKSG TGEVPSAPRE NRTTPDCERA FPEERPEVLG QRSTDVVDLE NEEPDSDNEW QHLLETTEPV PIQLKAPLTL LCNPDFCQRI QSQLHEA
Predicted molecular weight	87 kDa including tags
Amino acids	1 to 457

Specifications

Our **Abpromise guarantee** covers the use of **ab139615** in the following tested applications.

The application notes include recommended starting dilutions; optimal dilutions/concentrations should be determined by the end user.

Applications Western blot

Functional Studies

SDS-PAGE

Form	Liquid
Additional notes	ab64311 (Myelin Basic Protein protein) can be utilized as a substrate for assessing kinase activity

Preparation and Storage

Stability and Storage

Shipped on dry ice. Upon delivery aliquot and store at -80°C. Avoid freeze / thaw cycles.

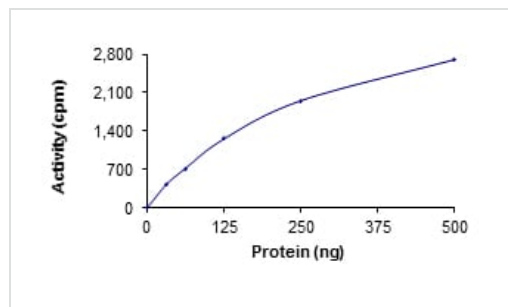
pH: 7.50

Constituents: 0.31% Glutathione, 0.002% PMSF, 0.004% DTT, 0.79% Tris HCl, 0.003% EDTA, 25% Glycerol (glycerin, glycerine), 0.88% Sodium chloride

This product is an active protein and may elicit a biological response in vivo, handle with caution.

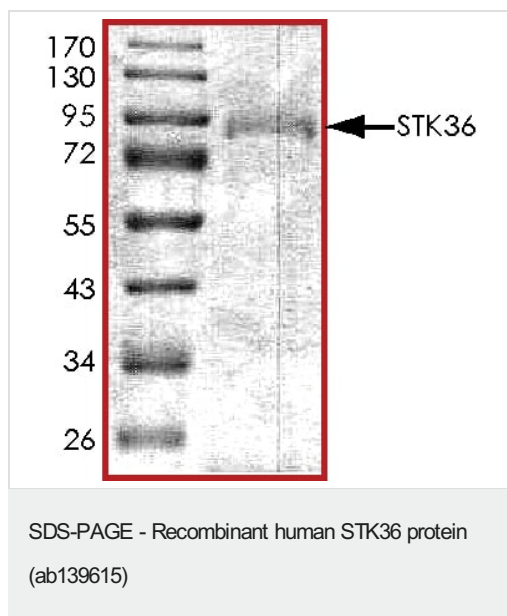
General Info

Images

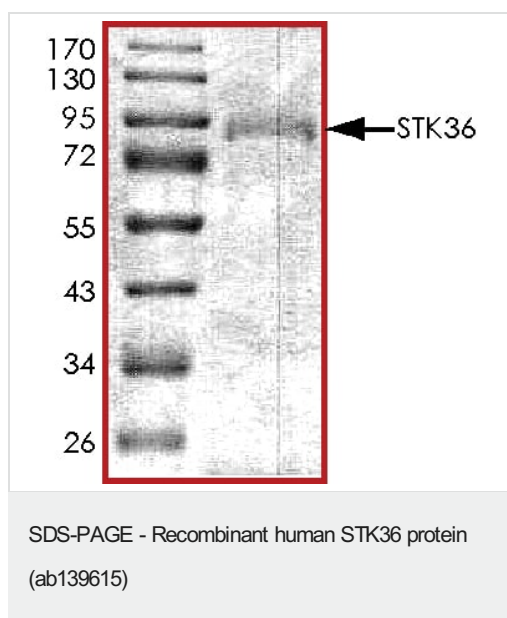


The specific activity of STK36 (ab139615) was determined to be 0.6 nmol/min/mg as per activity assay protocol

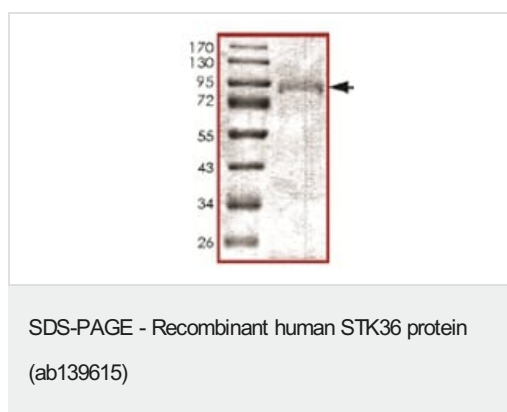
Functional Studies - Recombinant human STK36 protein (ab139615)



SDS PAGE analysis of ab139615



SDS PAGE analysis of ab139615



SDS PAGE analysis of ab139615

Please note: All products are "FOR RESEARCH USE ONLY. NOT FOR USE IN DIAGNOSTIC PROCEDURES"

Our Abpromise to you: Quality guaranteed and expert technical support

- Replacement or refund for products not performing as stated on the datasheet
- Valid for 12 months from date of delivery
- Response to your inquiry within 24 hours
- We provide support in Chinese, English, French, German, Japanese and Spanish
- Extensive multi-media technical resources to help you
- We investigate all quality concerns to ensure our products perform to the highest standards

If the product does not perform as described on this datasheet, we will offer a refund or replacement. For full details of the Abpromise, please visit <https://www.abcam.com/abpromise> or contact our technical team.

Terms and conditions

- Guarantee only valid for products bought direct from Abcam or one of our authorized distributors